



# MyLab™ E85 GTS<sup>Edition</sup> with UroFusion

A new horizon in Urology Imaging



## Innovative design

for high-level of usability



**Excellent image quality** for standard and advanced prostate ultrasound examinations



**Automatic A.I. -based** fusion imaging with optimal workflow in targeted biopsy



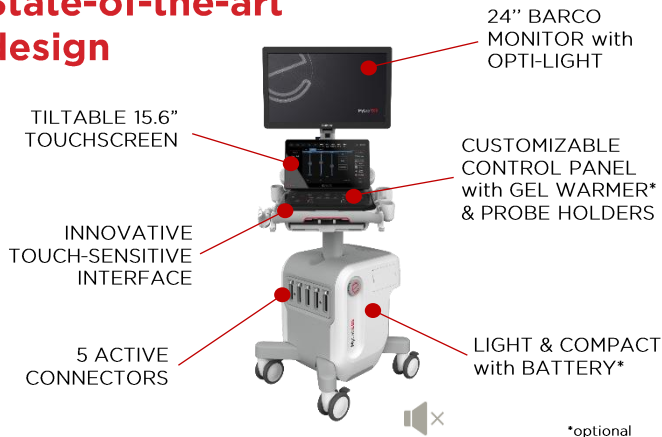
**Ultrasound-guided biopsy and treatment** supporting the prostate care pathway



Continuously **increasing customer satisfaction** rates

# MyLab™ E85 GTS Edition

## State-of-the-art design



## High level of cleanability

thereby enhancing overall hygiene

The touch panel configuration is specifically designed for the urology field, offering complete cleanability, which is particularly important in interventional rooms where procedures such as biopsies or focal therapies are performed.



Esaote S.p.A. - sole shareholder company

Via Enrico Meloni 77, 16152 Genoa, ITALY, Tel. +39 010 6547 1, Fax +39 010 6547 275, info@esaote.com  
MyLab™ is a trademark of Esaote spa. Technology and features are device/configuration-dependent. Specifications subject to change without notice. Information might refer to products or modalities not yet approved in all countries. The AI-based tool is intended to assist, not replace, the clinical judgment of qualified healthcare professionals. Product images are for illustrative purposes only. For further details, please contact your Esaote sales representative.

# UroFusion

Exclusive A.I.-based automatic fusion imaging solution for prostate



### Applicable to both TP and TR approaches

using either an end-fire or bi-planar transducer.

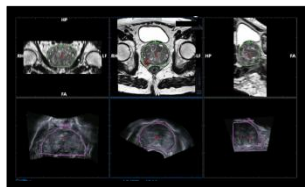


### Fast and accurate synchronization

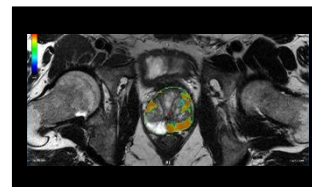
powered by advanced machine learning algorithms.



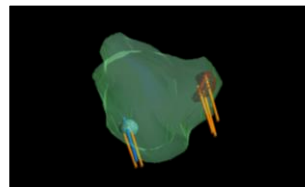
**Full reporting** with complete sample mapping for both targeted and systematic biopsies.



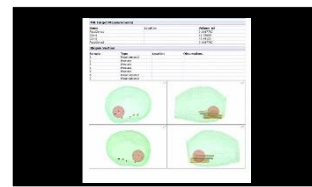
Automatic A.I.-based US and MRI prostate segmentation with simultaneous synchronization.



The Prostate Attention Map (PAM) displays automatically MRI-based suspicious areas for biopsy, supporting clinical decision-making.



3D mapping and recording of the prostate, targets, and biopsy sample locations.



Automated comprehensive report generation, editable if needed.