

The Dedicated MRI Factbook



Esaote MRI: A world of difference

esaote

Esaote Dedicated MRI Measures of Excellence

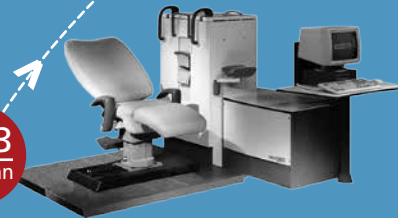
“Creativity in Healthcare” is Esaote’s motto which represents the philosophy that has been adopted by the Dedicated MRI product line since its inception in 1993, a year that marked the launch of the world’s first dedicated MRI for extremities, Artoscan. From the outset the company has positioned itself as an innovator and has broadened its product offering, gaining recognition from industry as a pioneer in Dedicated MRI.

Over two decades, Esaote has continued to maintain its leadership position in the Dedicated MRI segment because its products are focused on satisfying specific requirements that have not been met by the other imaging companies. Research and development activities are strongly driven by customer needs and by working very closely with users and clients, Esaote is able to respond to new market demands and expectations.

The growing family of innovative dedicated MRI systems boasts common features such as ease of use, open ergonomic design that guarantees optimal patient comfort and cost effectiveness. The positive cost-benefit ratio that can be attributed to Esaote’s MRI systems is particularly attractive given the current economic climate and industry challenges facing healthcare providers.

Major Milestones >

1993
Artoscan



1999
E-scan



2001
C-scan

2003
First 1,000 systems sold

2005
G-scan





2008
S-scan

2012
Over 2.400 systems sold.
Esaote Family of innovative
dedicated MRI system
continues to grow



2007
Opera



O-scan



G-scan Brio



S-scan

Today
eXP Technology
available on all Esaote
dedicated MRI systems



O-scan, Take Pride in Performance

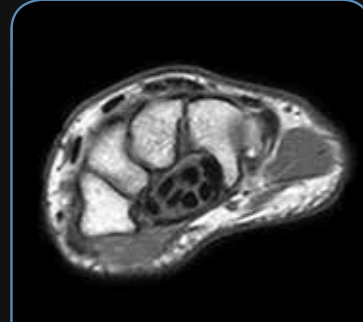
O-scan, the Star Performer in MRI for extremities, satisfies the need for higher through-put in Radiological settings and Orthopaedic practices. It can easily work alongside whole body scanners in Radiology departments, freeing-up the time for major clinical cases on the whole-body imager therefore allowing you to improve your workflow and provide an optimal patient experience.

- ✓ Very high quality MRI joint examinations at a much more competitive cost than standard whole body MRI systems
- ✓ Open, ergonomic design, no claustrophobia
- ✓ High patient comfort
- ✓ Real-Time Positioning
- ✓ Fits in only 9 m² (100 ft²)
- ✓ Low power consumption runs from a standard wall-plug
- ✓ Complete set of dedicated DPA coils





Knee FSE T2 Sagittal



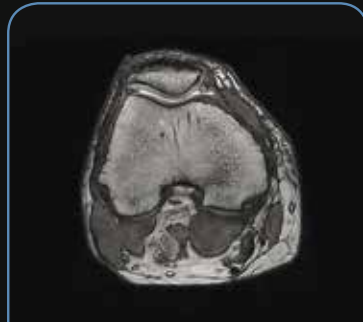
Wrist SpinEcho T1 Axial



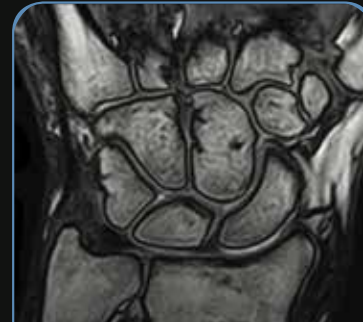
Ankle STIR Sagittal



Elbow 3D SHARC Coronal



Knee 3D SHARC Axial



Wrist 3D SHARC Coronal



Knee XBONE Sagittal



Wrist XBONE Coronal



G-scan Brio, The Key to Confidence

The G-scan Brio is a revolutionary MRI approach for all musculoskeletal applications, which allows you to increase your diagnostic accuracy and confidence. The open and tilting design is the new and innovative way of doing MRI in which the position of the patient becomes an integral part of the outcome of the examination.

- ✔ G-scan Brio is a dedicated musculoskeletal MRI system covering all applications from foot to shoulders and the most important spine segments such as L & C-spine
- ✔ Weight-bearing: a new frontier in spine and knee MRI giving your clinic the possibility to distinguish itself from competitors
- ✔ Real-time positioning feature: display on the gantry showing in real-time the MR image of the joint assuring fast and accurate positioning
 - ✔ Open MRI, no claustrophobia
 - ✔ Fits in only 23 m² (245 ft²)
 - ✔ Complete set of dedicated coils



Images courtesy:

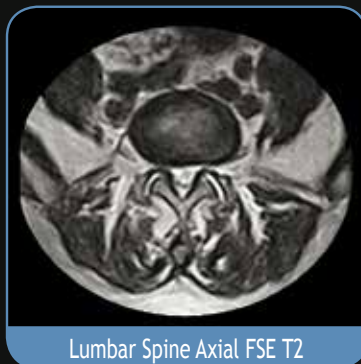
Department of Radiology, University of L'Aquila, Italy
Villa Donatello clinic, Florence, Italy



**G-scan Brio
supine**



Spine FSE T2, 4mm



Lumbar Spine Axial FSE T2



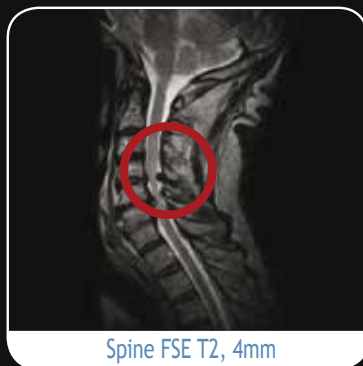
Knee Coronal SE T1



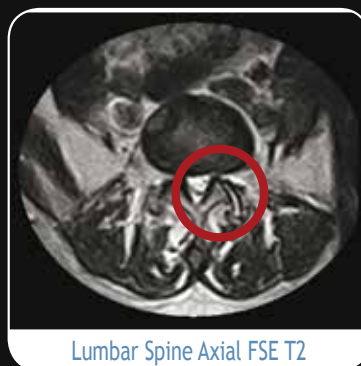
Lumbar Spine Sagittal FSE T2



**G-scan Brio
weight-bearing**



Spine FSE T2, 4mm



Lumbar Spine Axial FSE T2



Knee Coronal SE T1



Lumbar Spine Sagittal FSE T2

C-spine. in weight-bearing flexion, evident ligament instability at level of C4-C5

Lumbar Spine. Articular facet instability highlighted in weight-bearing, while supine exam only shows arthrosis

Knee. In weight-bearing the actual damage to the cartilage of the medial compartment is clear and the origin of the bone edema is well identified. The lesion to the medial collateral ligament is visible only in weight-bearing

Lumbar Spine. Spondylolisthesis at L4-L5 level, highlighted in the weight-bearing position



S-scan, The Next Step in Office MRI

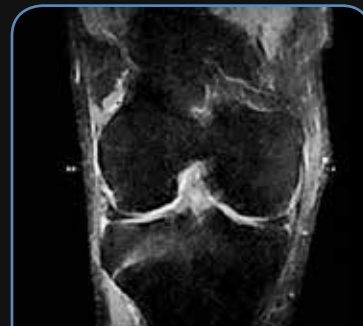
The S-scan dedicated MRI scanner represents the latest development of Esaote's technology in MRI. It is perfectly in line with today's need for efficient and economic health care and a sensible choice for any practice with a substantial musculoskeletal work-load.

- ✔ The S-scan covers all musculoskeletal MRI, from foot to shoulders and the most important spine segments such as L& C-spine
- ✔ The unique design and wide, rotating patient table guarantees easy patient positioning, patient comfort, maximum stability and easy examination management
- ✔ Open gantry: easy patient access, no claustrophobia
- ✔ Real-time positioning: fast error free positioning with the real-time feature that includes fast sequences and a display on the gantry
- ✔ Fits in 20 m² (238 ft²). Same space as the Esaote Opera and E-scan systems, therefore an ideal upgrade path
- ✔ Complete set of dedicated coils





Ankle GE T2 Sagittal



Knee STIR Coronal



Shoulder SE T1 Coronal



Lumbar spine FSE T2 Sagittal



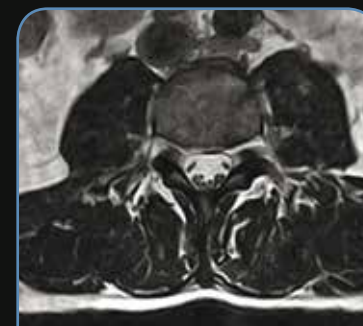
Hip XBONE T2 Coronal



Wrist GE Coronal



C-spine FSE T2 Sagittal



Lumbar Spine 3D Hyce Axial



Q&As on Dedicated MRI

What are the benefits of dedicated MRI with respect to conventional whole body MRI systems?

Esaote Dedicated MRI systems boast unique technical features that target specific applications, are equipped with dedicated coils and customized software, have an open design and optimal ergonomics which maximize patient comfort and eliminate unpleasant claustrophobic reactions. They require limited installation space, and feature much lower installation and maintenance costs.

Why is image quality so good?

Most imaging experts are surprised by the high quality images produced by dedicated technology. Thanks to a combination of dedicated MSK sequences, advanced RF coils, better computing technology and optimized magnet homogeneity, Esaote MRI systems deliver high resolution MSK images with good acquisition times.

Who are the main users of dedicated MRI?

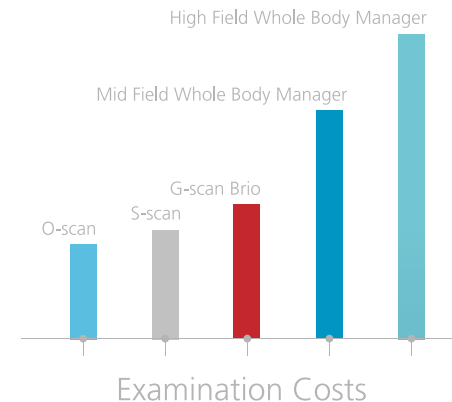
Dedicated systems are suitable for any clinical environment from Radiology departments in large hospitals, orthopaedic and sport medicine centres aiming to provide direct MRI services, to specialized rheumatology centres.

Why should a healthcare center invest in a dedicated MRI for extremities?

One of the main reasons why an extremity MRI is an appealing investment is because it can work as a standalone system or alongside whole body scanners freeing up the time for major clinical cases allowing you to optimize resources and reduce waiting lists which can be a problem for many healthcare facilities. Given that over 20% of exam requests are for joints excluding spine, if you use a simpler system for handling the extremity cases you can increase efficiency and avoid the extra costs connected with the purchase of another whole-body system.

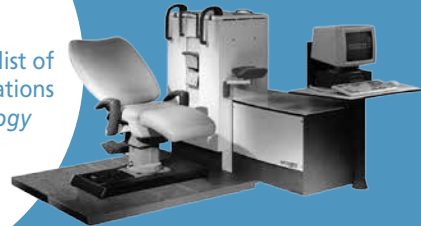
Esaote MRI: The most cost effective systems

The low break even of Esaote systems is fully in line with the economic constraints of today's healthcare environment which make them optimal investments also for private clinics.



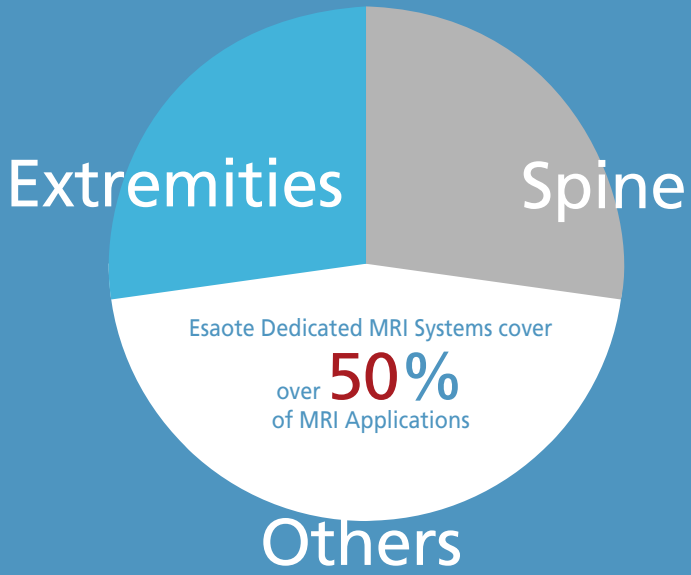
Facts & Figures

In **1994**
Artoscan was included on the list of the ten most important innovations in the imaging field (*Radiology Today USA 1994*)



Over **1.300** systems dedicated to extremity imaging (Artoscan, C-scan, O-scan) have been sold worldwide

More than **100** scientific papers have been published on Dedicated MRI



Esaote Dedicated MRI Systems cover over **50%** of MRI Applications

In **2001**
E-scan was awarded the "Compasso d'Oro" from ADI (Association for the Industrial Design). This is the most prestigious design award in Europe with a history of almost 50 years. Including Esaote, the 2001 "Compasso d'oro" has been awarded to such companies like Ferrari (sports cars) and Alessi (the home supplies company)



Premio Compasso D'oro ADI





Specifications subject to change without notice.
Information refer to products or modalities not approved in all countries.
For further details, please contact your Esaote sales representative.



Esaote S.p.A.

International Activities: Via di Caciolle, 15 50127 Florence, Italy, Tel. +39 055 4229 1, Fax +39 055 4229 208, international.sales@esaote.com
Domestic Activities: Via A. Siffredi, 58 16153 Genoa, Italy, Tel. +39 010 6547 1, Fax +39 010 6547 275, info@esaote.com

www.esaote.com

FRANCE
Esaote Medical SAS
ZA du Bel Air
10, rue de Témar, 78105 Saint Germain en Laye
Tel. +33 1 8204 8900, Fax +33 1 3061 7210
info@esaote.fr

BRASIL
Esaote Healthcare do Brasil
Rua Geraldo Flausino Gomes, 78
CEP: 04575-060 São Paulo - SP
Tel. +55 11 2789-0400 Fax +55 11 2789-0432
comercial@esaote.com.br

GERMANY
Esaote Biomedica Deutschland GmbH
Max-Planck-Straße 27a
50858 Köln
Tel. +49 2234 688 5600, Fax +49 2234 967 9628
info@esaote.de

ARGENTINA
Esaote Latinoamérica S.A.
San Martín 551, Cuerpo 'C', Piso 8, (C1004AAK)
Buenos Aires
Tel. +54 11 4326 1832, Fax: +54 11 4328 1245
info@esaote.com.ar

SPAIN
Esaote España S.A.
Avda San Sebastian, s/n
08960 Sant Just Desvern, Barcelona
Tel. +34 93 473 2090, Fax +34 93 473 2042
info@esaote.es

INDIA
Esaote Asia Pacific Diagnostic Private Limited
DLF IT Park, A - 44 & 45, Tower- C, Ground Floor,
Sector- 62, Noida, Uttar Pradesh, India
Pin Code: 201 301
Tel. +91 120 4732444, Fax +91 120 4750148
info@esaote.in

THE NETHERLANDS AND BELGIUM
Esaote Benelux B.V.
Philipsweg 1
6227 AJ Maastricht
Tel. +31 43 3824650, Fax +31 43 3824651
benelux@esaote.nl

HONG KONG AND FAR EAST
Esaote China Ltd
18/F, 135 Bonham Strand Trade Centre,
135 Bonham Strand, Sheung Wan, Hong Kong
Tel. +852 2545 8386, Fax +852 2543 3068
esaote@esaotechina.co

UK
Esaote UK
14, Cambridge Science Park
Milton Road, Cambridge, CB4 0FQ
Tel. +44 1223 424499, Fax +44 709 288 0231
infoUK@esaote.com

CHINA
Esaote Shenzhen Medical Equipment
Room 2608, Tower B
Beijing Global Trade Center
36 North Third Ring Road East,
Dongcheng District, 100013, Beijing
Tel. +86 010 58257766, Fax +86 010 52257760

NORTH AMERICA
Esaote North America
8000 Castlaway Drive,
Indianapolis, IN 46250
Tel. +1 317 813 6000, Fax +1 317 813 6600
inquire@esaoteusa.com

RUSSIAN FEDERATION AND CIS
Esaote S.p.A.
18 Leningradsky prospekt
Off. 5 and 6, Moscow 125040
Tel. +7 495 232 0205, Fax +7 495 232 1833
esaotemoscow@yandex.ru