

Innovative Clinical Solutions from Prevention to Therapy

Product Profile



increasing
Productivity
Efficiency
Value



Esaote is one of the world's leading medical solutions provider

Esaote Group is a leading player in the medical solutions sector, with a particular focus on ultrasound, dedicated magnetic resonance, and healthcare IT.

Esaote has over 1,360 employees, 20% of which are employed in R&D activities. Esaote has industrial and research units in Italy (Genoa, Florence, Naples), the Netherlands (Maastricht) and China (Shenzhen).

Esaote is internationally recognized as one of the "Top Ten" diagnostic imaging companies in the world. Information about Esaote and its products is available at www.esaote.com.



Dedicated MRI



Ultrasound Systems



Healthcare IT

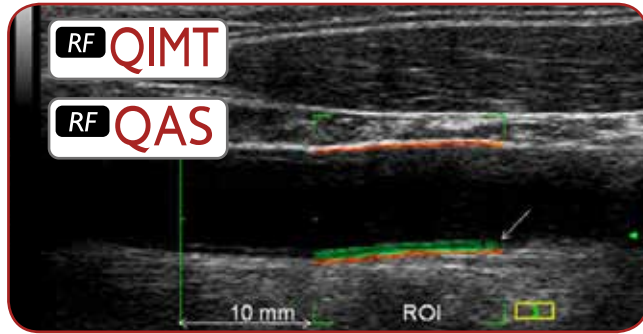


Interventional



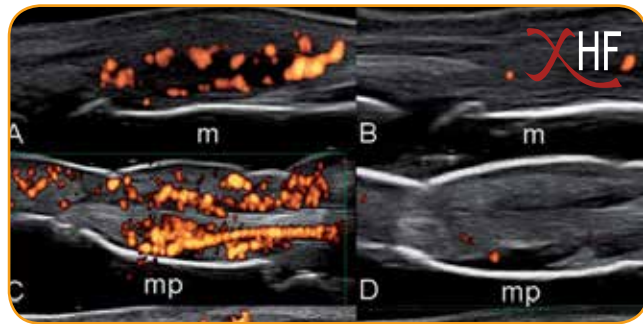
Service Solutions

Innovative Clinical Solutions



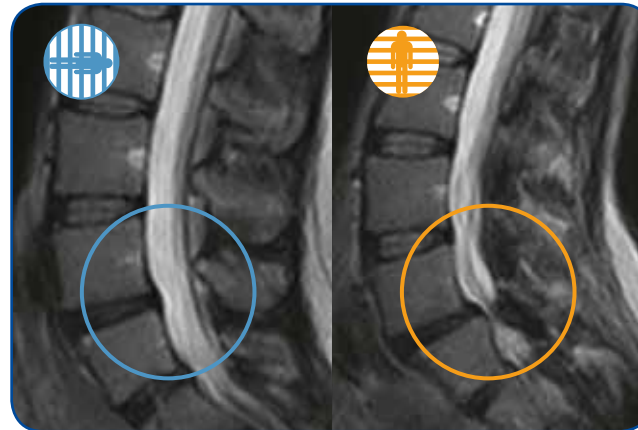
Cardiovascular Risk Assessment

QIMT & QAS allows automated non-invasive detection of blood vessel properties, i.e.: Intima Media Thickness and Arterial Stiffness. Based on RF Signal analysis they provide physicians with an help in the risk assessment of cardiovascular diseases (CVD) and target organ damage (TOD).



High resolution ultrasound imaging

Thanks to ultra-high frequencies (up to 22 MHz) and extreme sensitive Power Doppler (up to 16.7 MHz), it is possible to obtain a detailed study of morphostructural changes and detail detection of blood flow. High resolution ultrasound imaging improves early detection of severe diseases with a strong prevention power.

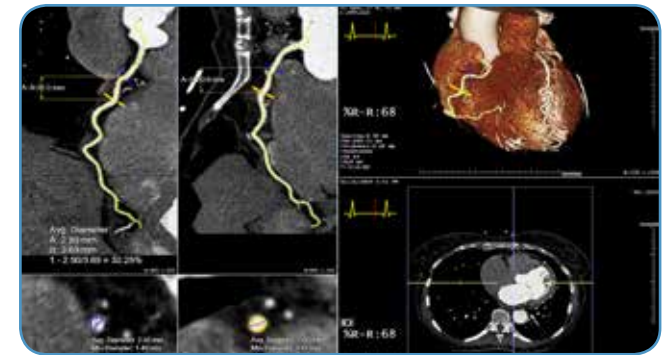


Weight-bearing MRI

Esaote's innovative approach to Musculoskeletal MRI is based on the exclusive G-scan brio tilting design where the position of the patient becomes an integral part of the examination's outcome. The true weight-bearing position allows you to visualize the actual condition of pathologies.

Point-of-Care Ultrasound

Dedication to Point-of-Care Ultrasound means focus and attention to specific applications and needs, inspiring technological developments that bring the most effective solutions for any clinical environment and work-flow.



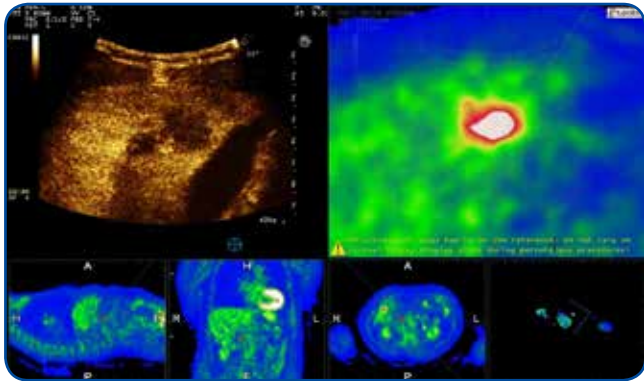
Suitestensa RIS CVIS PACS

Suitestensa is a modular software platform for cardiologists and radiologists devoted to simplify and make more efficient the workflow within clinical departments. Suitestensa turns, first in the competitive RIS CVIS PACS arena, the concept of structured report into a real application, changing the way in which cardiologists and radiologists present their findings to specialists and clinicians.

PREVENTION

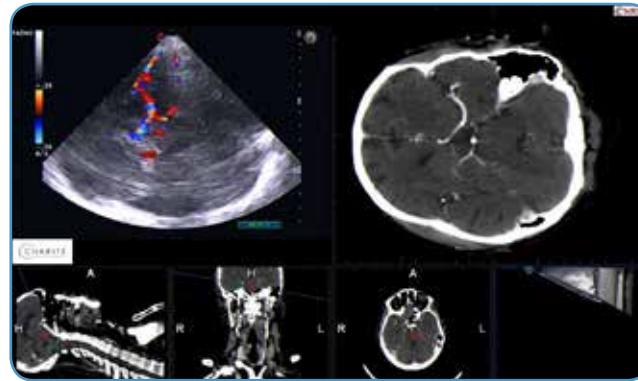
DIAGNOSIS

increasing Productivity Efficiency Value



Imaging Guided Procedures

The possibility to perform imaging guided interventional procedures represents an outstanding valuable tool. Contrast Enhanced Ultrasound (CEUS), Elastography and Fusion Imaging help in the detection and characterization of poorly visible lesions.



Fusion Imaging

Fusion imaging in transcranial application provides with the most comprehensive picture in this field. By combining real time ultrasound imaging with MRI's detailed anatomical volume, this solution can be very helpful for expert and non-expert physicians.



Virtual Biopsy

The Virtual Biopsy up-to-date modality allows to follow biopsy percutaneous procedures by means of a dedicated needle provided with sensor that superimposes the needle path in the real-time ultrasound image. The aim is to support interventional procedures and improve reliability and clinical outcomes.



EchoLaser

EchoLaser is the first and unique system performing ultrasound and thermal laser ablation. It offers to the operator an ergonomic platform for

- diagnosis
- planning
- targeting
- therapy
- follow-up



INTERVENTION

THERAPY



MyLab™Twice

The MyLab™Twice with the unique "Twice Ultrasound Vision" help to increase efficiency in hospital organization. It provides Premium Performance Ultrasound service and thanks to MyLab™Sat can move imaging to wherever it is needed, for faster diagnosis and improved patient care. Its main characteristics allow the system to be placed in any environment, always providing easy, fast and reliable access to diagnosis and data sharing.

- Superior image quality with unmatched high-frequency range
- Dedicated intelligent and intuitive interface
- Wireless networking for easy data sharing, storage and printing



MyLab™Seven

MyLab™Seven with eHD Technology delivers high-class performance in compact size and offers productivity in real-time, which means better diagnosis in less time, and improved user comfort and clinical outcome as well as department throughput and efficiency.

- Productivity & simplicity in real-time
- High performance
- Small footprint and light weight
- State-of-the art technology & connectivity



MyLab™Alpha

The MyLab™Alpha with eHD Technology has been designed to deliver top performance and high dynamism in a very reduced size and weight. The system offers a range of efficient "ready-to-go" solutions, when mobility and time are strictly important, but also can be used in a stationary mode.

- Ergonomic and compact
- Unparallel simplicity and productivity tools
- State-of-the art technology & connectivity

CrystaLine

Discover CrystaLine, a significant evolution of ultrasound technology that optimizes workflow while enhancing image brightness, clarity, and sharpness to improve clinical productivity, efficiency and value.

Ultrasound diagnostic systems, cart-based, compact and portable.

Ultrasound Systems



Offering a wide range of applications, Esaote ultrasound systems are used in facilities all over the world. Today, we are among the largest ultrasound scanner manufacturers on the world with more than 130.000 ultrasound systems installed globally. Our innovative ultrasound systems offer top quality, flexibility and ergonomics for any clinical need.



MyLabSix

Designed with exclusive ergonomics and ultrasound imaging features, MyLab™Six is the Premium Choice in its class. Configured for an extensive range of applications, MyLab™Six delivers a premium quality, yet affordable, solution for shared ultrasound services across any busy clinical setting.

- Easy workflow
- Extreme silent for utmost user comfort
- Exclusive ergonomics



MyLabGamma

MyLab™Gamma is a best in class, highly-portable, 'green' ultrasound system. Based on Esaote's productivity-oriented operating platform, the super-light, feature packed portable system sets ultrasound free to be used in any environment.

- From Point-of-Care to Shared Service solutions
- Superb imaging
- Long time battery service



MyLabOne

The MyLab™One is designed to bring ultrasound at the Point-of-Care.

This fast, intuitive ultrasound system has no limits in the use for generic and specific applications. Its main characteristics allow the system to be placed in any environment, always providing easy, fast and reliable access to diagnosis.

- Efficiency oriented workflow
- Intelligent interface
- On-board libraries
- Dedicated presets and system configurations

The unique features of our dedicated MSK-MRI systems, high image quality, extremely cost efficient and the unique WB-MRI capabilities, make Esaote world leader in dedicated MRI.

Dedicated MRI



Due to the innovative and proprietary technology Esaote is the leader in dedicated musculoskeletal MRI, with over 2000 systems installed throughout the world. The growing family of innovative dedicated MRI systems boasts common features such as ease of use, open ergonomic design that guarantees optimal patient comfort and cost effectiveness.



The key to confidence

The G-scan brio is a revolutionary system for all musculoskeletal applications, from a simple knee to weight bearing spine. It represents the future in musculoskeletal MRI as it offers additional diagnostic capabilities. In fact, thanks to its unique tilting design, the patient can be moved in a true weight-bearing position, allowing you to visualize the actual condition of pathologies.

- Weight-bearing: Visualize conditions either in a clinostatic (supine) or in a orthostatic (weight-bearing) position
- Real-time MR image on display: To assure fast and accurate positioning
- Open MRI, no claustrophobia
- Fits in only 23 m²
- Complete set of coils



Take pride in performance

O-scan, the Star Performer in MRI for extremities, takes account of the need for higher throughputs in radiological settings and orthopaedic practices. It can easily work alongside whole body scanners in radiology departments, freeing up the time for major clinical cases therefore allowing to improve workflow and provide an optimal patient experience.

- Very high quality MRI joint examinations at a much more competitive cost than standard whole body MRI systems
- Open, ergonomic design, no claustrophobia
- High patient comfort
- Real-time positioning
- Fits in only 9 m²
- Low power consumption runs from a standard wall-plug
- Complete set of dedicated DPA coils



The Next Step in Office MRI

The S-scan dedicated MRI system represents the latest development of Esaote's technology in MRI. It is perfectly in line with today's strive for efficient and economic healthcare and a sensible choice for any practice with a substantial musculoskeletal workload.

- Open gantry: easy patient access, no claustrophobia
- Real-time MR image on display: to assure fast and accurate positioning
- Fits in 18 m²
- Complete set of coils



Ebit is the Esaote's Business Unit dedicated to Information Technology for Healthcare. Its cutting-edge software systems for the integrated workflow management of the diagnostic process provide a new approach to workflow and manage the widest regional healthcare enterprise networks, implementing the newest Structured Report, Integrated 3D and mobile PACS solutions, all within a single data base and user interface.

Healthcare IT



Suitestensa RIS PACS - Innovative RIS PACS Conception

Suitestensa is the RIS PACS Imaging & Information Management Software platform for the effective implementation of filmless and paperless hospitals. Suitestensa bridges RIS, PACS and applications in an innovative way, simplifying all phases of radiological workflow. Based on web-enabled technology, Suitestensa exploits DICOM 3.0, HL7 and FDAXML standard communication protocols, supporting systems' interoperability and avoiding data duplication. Integrated into Suitestensa, the best 3D & 4D applications offer unparalleled visualization for large CT, MR or PET datasets for imaging postprocessing. With the best-of-breed, entirely customizable workspaces and exceptional Structured Report functionalities Suitestensa is changing thinking Reporting allowing to share key images, observations and associated measurements with specialists and clinicians.

Suitestensa CVIS PACS - The New Cardiology Comprehensive Approach

By encompassing all cardiology specialties into one single platform, Suitestensa allows for achieving a better workflow from patient admission to exam execution, reporting and distribution. Suitestensa cardiology folder contains all exams performed in the cardiology department and can be connected to other diagnostic examinations to get the entire clinical history of a patient simply as just one click. Complete administrative and statistics tools, real-time warehouse, stock and inventory functionalities automate many of today cost-consuming and manual operations. The Review application offer simultaneous 2D 3D 4D viewing of several examinations and multiple dataset with dedicated structured reporting datasheets for each specific discipline and pathology, for a true multi-user multi-department, multi-modality, multi-vendor integrated management.

Advanced Software Solutions for Clinical Departments

Suitestensa RT - Radiotherapy Information System and PACS
The point-of-reference RT Software for Radiation Treatment Planning prepared by Radiation Oncologists, Physicists, Radiotherapists.

Suitestensa MG - Mammography Information System and PACS
The best MG Software for the management, reporting, archiving and distribution of digital mammograms in Breast Cancer Screening Programs and in integrated Hospital Information Systems and RIS PACS environment.

CAAS XA - X-Ray Angiography Software
The gold standard in Quantitative Analysis Software for X-ray angiography image analysis (QCA, QVA, LVA, RVA, Aortic Valve).

CAAS IVUS OCT - Intravascular Software
IVUS and OCT analysis, pre-operative coronary assessment and post PCI follow-up.

CAAS MR - MR Quantitative Analysis Software
Magnetic Resonance Ventricular and Flow Analysis software for Left and Right Ventricular Function, Infarct Analysis and First Pass Perfusion, Arterial Flow Quantification.

3mensio CT - Structural Heart & Endovascular Software
Dedicated to pre-op planning of endovascular interventions, aortic and mitral valve replacement, repair procedures and left atrial appendage closures.



Service Solutions

Our technical service combines a prompt and effective maintenance to ensure the maximum equipment workflow.

We rely on qualified technicians and repair centers in Genoa and Florence for maintenance activities. Moreover we cooperate with a world-wide team of Esaote trained engineers for maintaining a high safety standard and improved working performance, firmly adapted to your clinical requirements.

- Equipment upgrading
- On-call assistance
- Remote service
- Electrical safety inspections
- Maintenance contracts
- Training
- Site evaluation
- Installation
- On site activity



Evolution is the Esaote's continuous product improvement program which ensures product and service enhancements to increase customer satisfaction

ProductProfile

Innovative Clinical Solutions from Prevention to Therapy

increasing
Productivity
Efficiency
Value

16000001MAK Ver. 04



Esaote S.p.A.

Via di Caciolle, 15 50127 Florence, Italy, Tel. +39 055 4229 1, Fax +39 055 4229 208, international.sales@esaote.com
 Via A. Siffredi, 58 16153 Genoa, Italy, Tel. +39 010 6547 1, Fax +39 010 6547 275, info@esaote.com

FRANCE

Esaote Medical SAS
 ZA du Bel Air
 10, rue de Témara, 78105 Saint-Germain-en-Laye
 Tel. +33 1 8204 8900, Fax +33 1 3061 7210
 info@esaote.fr

GERMANY

Esaote Biomedica Deutschland GmbH
 Max-Planck-Straße 27a
 50858 Köln
 Tel. +49 2234 688 5600, Fax +49 2234 967 9628
 info@esaote.de

SPAIN

Esaote España S.A.
 C/. Pont Reixat, 5
 08960 Sant Just Desvern, Barcelona
 Tel. +34 93 473 2090, Fax +34 93 473 2042
 info@esaote.es

THE NETHERLANDS AND BELGIUM

Esaote Benelux B.V.
 Philipsweg 1
 6227 AJ Maastricht
 Tel. +31 43 3824650, Fax +31 43 3824651
 benelux@esaote.nl

UK

Esaote UK
 14, Cambridge Science Park
 Milton Road, Cambridge, CB4 0FQ
 Tel. + 44 1223 424499, Fax + 44 709 288 0231
 infoUK@esaote.com

NORTH AMERICA

Esaote North America
 8000 Castleway Drive,
 Indianapolis, IN 46250
 Tel. +1 317 813 6000, Fax +1 317 813 6600
 inquire@esaoteusa.com

BRASIL

Esaote Healthcare do Brasil
 Rua Geraldo Flausino Gomes, 78
 CEP: 04575-060 São Paulo - SP
 Tel. +55 11 2789-0400 Fax +55 11 2789-0432
 comercial@esaote.com.br

ARGENTINA

Esaote Latinoamérica S.A.
 San Martín 551, Cuerpo 'C', Piso 8, (C1004AAK)
 Buenos Aires
 Tel. +54 11 4326 1832, Fax: +54 11 4328 1245
 info@esaote.com.ar

INDIA

Esaote Asia Pacific Diagnostic Private Limited
 DLF IT Park, A - 44 & 45, Tower- C, Ground Floor,
 Sector-62, Noida, Uttar Pradesh, India
 Pin Code: 201 301
 Tel. +91 120 4732444, Fax +91 120 4750148
 info@esaote.in

HONG KONG AND FAR EAST

Esaote China Ltd
 18/F, 135 Bonham Strand Trade Centre,
 135 Bonham Strand, Sheung Wan, Hong Kong
 Tel. +852 2545 8386, Fax +852 2543 3068
 esaote@esaotechina.com

CHINA

Esaote Shenzhen Medical Equipment
 Room 2608, Tower B
 Beijing Global Trade Center
 36 North Third Ring Road East,
 Dongcheng District, 100013, Beijing
 Tel. +86 010 58257766, Fax +86 010 52257760

RUSSIAN FEDERATION AND CIS

Esaote S.p.A.
 18 Leningradsky prospekt
 Off. 5 and 6, Moscow 125040
 Tel. +7 495 232 0205, Fax +7 495 232 1833
 esaotemoscow@yandex.ru

EchoLaser is a product of Elesta joint venture Esaote – El-En. Not available for sale in the US.
 Technology and features are system/configuration dependent.
 Specifications subject to change without notice. Information might refer to products or modalities not yet approved in all countries.
 For further details, please contact your Esaote sales representative.

