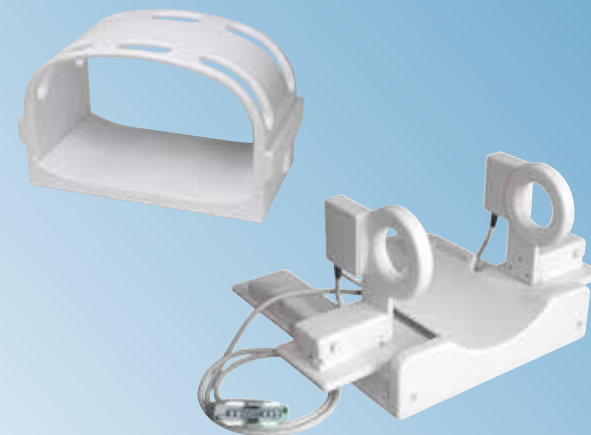


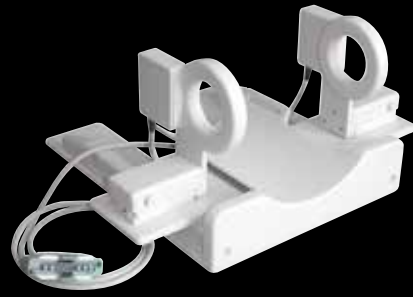


evo^{'15}lution

Dedicated MRI

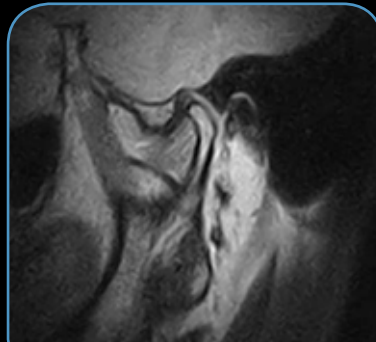


esaote

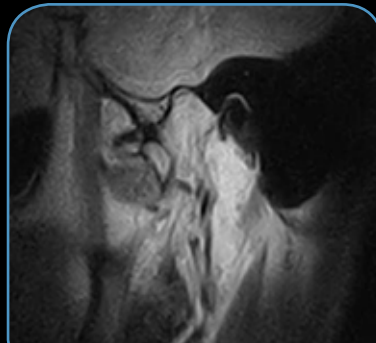


Bilateral TMJ Coil **NEW**

This coil allows simultaneous scanning of both joints, reducing the exam time and the risk of patient movements. It also includes an adjustable device to guarantee comfortable positioning according to the patient's head size. It can be used for both supine and weight-bearing examination, thanks to a specific coil adaptor.



FSE PD Sagittal - Closed mouth



FSE PD Sagittal - Open mouth

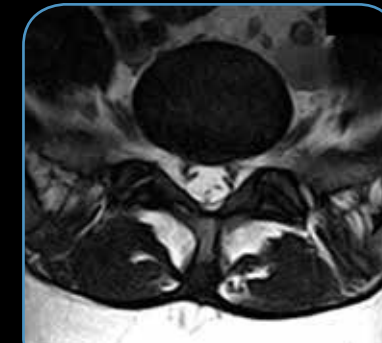


XL Flex L-Spine Coil **NEW**

This coil has been designed with the aim to better accommodate large patients in case of L-spine examination. The use of two different length of flexible belts, allows to cover also patients with large pelvic circumference, without giving comfort up.



FSE T2 Sagittal



3D Hyce Transverse

Providing our latest set of multi-channel coils which are characterized by high performance in terms of image quality and ergonomics, thereby improving patient comfort and diagnostic confidence.

New multi-channel technology uses a new, low-impedance pre-amplifier that delivers more efficient channel de-coupling to maximise the signal detected by each channel.

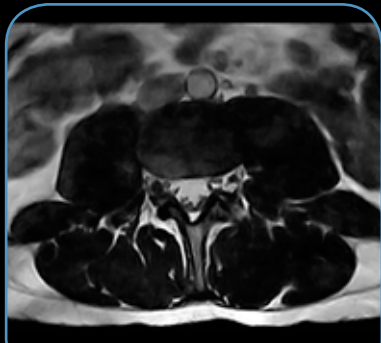


4-Channel L-Spine Coils

The EVO'15 Package includes a medium and a large L-Spine coil, both of which are designed to enhance the image quality of spine and hip exams. Each coil features four phased array channels to improve signal-to-noise ratio and signal uniformity, helping to increase anatomical detail and contrast resolution.



FSE T2 Sagittal



3D Hyce Transverse

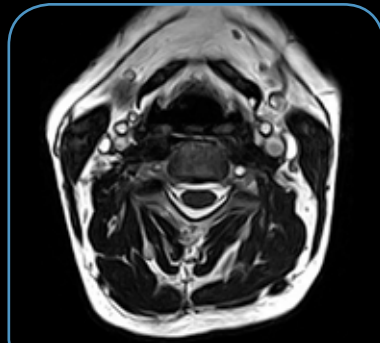


DPA C-Spine Coil

The C-Spine Coil features Dual Phased Array (DPA) technology that improves overall performance, especially in terms of signal uniformity in the whole region of interest. Moreover, its larger dimensions guarantee improved patient comfort during the examination.



FSE T2 Sagittal



3D Hyce Transverse

More coils,
more channels,
more ways
to achieve excellence
in spine imaging





evo^{'15}olution

is dedicated to



16000050MAK Ver. 01



Esaote S.p.A.
Via di Caciolle, 15 50127 Florence, Italy, Tel. +39 055 4229 1, Fax +39 055 4229 208, international.sales@esaote.com
Via A. Siffredi, 58 16153 Genoa, Italy, Tel. +39 010 6547 1, Fax +39 010 6547 275, info@esaote.com

FRANCE
Esaote Medical SAS
ZA du Bel Air
10, rue de Témara, 78105 Saint-Germain-en-Laye
Tel. +33 1 8204 8900, Fax +33 1 3061 7210
info@esaote.fr

GERMANY
Esaote Biomedica Deutschland GmbH
Max-Planck-Straße 27a
50858 Köln
Tel. +49 2234 688 5600, Fax +49 2234 967 9628
info@esaote.de

SPAIN
Esaote España S.A.
C/. Pont Reixat, 5
08960 Sant Just Desvern, Barcelona
Tel. +34 93 473 2090, Fax +34 93 473 2042
info@esaote.es

THE NETHERLANDS AND BELGIUM
Esaote Benelux B.V.
Philipsweg 1
6227 AJ Maastricht
Tel. +31 43 3824650, Fax +31 43 3824651
benelux@esaote.nl

UK
Esaote UK
14, Cambridge Science Park
Milton Road, Cambridge, CB4 0FQ
Tel. + 44 1223 424499, Fax + 44 709 288 0231
infoUK@esaote.com

NORTH AMERICA
Esaote North America
8000 Castleway Drive,
Indianapolis, IN 46250
Tel. +1 317 813 6000, Fax +1 317 813 6600
inquire@esaoteusa.com

BRASIL
Esaote Healthcare do Brasil
Rua Tomas Carvalhal, 711
04006-001 São Paulo SP
Tel. +55 11 2789 0400 Fax +55 11 2789 0432
comercial@esaote.com.br

ARGENTINA
Esaote Latinoamérica S.A.
San Martín 551, Cuerpo 'C', Piso 8, (C1004AAK) Buenos Aires
Tel. +54 11 4326 1832, Fax: +54 11 4328 1245
info@esaote.com.ar

INDIA
Esaote Asia Pacific Diagnostic Private Limited
DLF IT Park, A - 44 & 45, Tower- C, Ground Floor,
Sector- 62, Noida, Uttar Pradesh, India
Pin Code: 201 301
Tel. +91 120 4732444, Fax +91 120 4750148
info@esaote.in

HONG KONG AND FAR EAST
Esaote China Ltd
18/F, 135 Bonham Strand Trade Centre,
135 Bonham Strand, Sheung Wan, Hong Kong
Tel. +852 2545 8386, Fax +852 2543 3068
esaote@esaotechina.com

CHINA
Esaote Shenzhen Medical Equipment
Room 2608, Tower B
Beijing Global Trade Center
36 North Third Ring Road East,
Dongcheng District, 100013, Beijing
Tel. +86 010 58257766, Fax +86 010 52257760

RUSSIAN FEDERATION AND CIS
Esaote S.p.A.
18 Leningradsky prospekt
Off. 5 and 6, Moscow 125040
Tel. +7 495 232 0205, Fax +7 495 232 1833
esaotemoscow@yandex.ru

Technology and features are system/configuration dependent.
Specifications are subject to change without notice. Information may refer to products or modalities not yet approved in all countries.
For further details, please contact your Esaote sales representative.

