



**EVOLution
upgrade
package: the
continuous
improvement
program for
your Esaote
ultrasound
system**



MyWork

MyPatient

MySystem

MyLab™

MyLab™ evolution

- Image quality
- Easy workflow
- Advanced hemodynamic technology
- Comprehensive interventional packages and quantification tools
- Complete solution for urology
- Remote control and customizable keyboard
- Improved multimedia capabilities



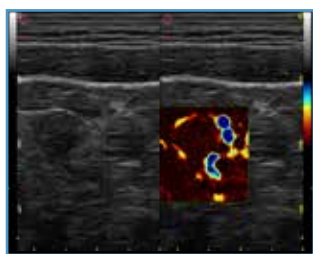
MyLab™ Class C



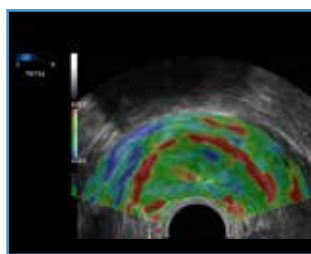
MyLab™ Twice

MyLab evolution offers an incredible set of new tools

- **QElaXto** - Shear Wave technology for Tissue Stiffness Quantitative Assessment (for MyLab™Twice)
- **microV** - high sensitivity, high spatial resolution, high Frame rate hemodynamic analysis for micro-vascularization in tissue perfusion
- **Wide angle** on convex, linear, and microconvex probes for enlarged field of view
- **ElaXto extension** - strain elastosonography package and measurements for multiple applications and probe typologies (EC1123, TRT33, SI2C41, LA332)
- **Improved IQ** on linear probes (LA533/LA435)
- **New ultra high frequency probe** with elastosonography (SL2325)
- **Reusable biopsy kit** for high frequency linear probe LA533
- **Stepper Grid** for transperineal biopsies and treatments guidance for transrectal dual array probe with real-time Fusion Imaging option
- **Contrast-enhanced Ultrasound CnTI™ Quantification Software**
- **CnTI™** availability on microconvex probe (SC3123)
- **MyLab™Remote 2.0** - Remote system user interface app to control your MyLab™ system via smartphone or tablet
- **MyLab™App** for smart data transfer to mobile devices
- **Exam pause/re-opening** for improved workflow and patient throughput
- **Real-time DICOM** and connection improvements
- **Uninterruptible Power Supply (UPS)** option



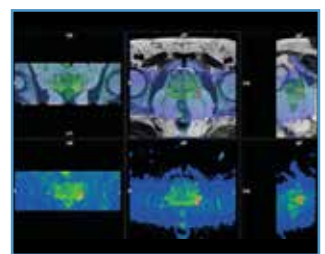
microV hemodynamic analysis



ElaXto full-body



Top CnTI™ performance



Urology Fusion Imaging

Thank you for your trust in Esaote

We listen to your needs and work every day to provide the most advanced technologies and innovative design for you to excel in patient care.

Technology and features are system/configuration dependent. Specifications subject to change without notice. Information might refer to products or modalities not yet approved in all countries. CnTI™: The use of Contrast Agents in the USA is limited by FDA to the left ventricle opacification and to characterization of focal liver lesions. For further details, please contact your Esaote sales representative.

ESAOTE S.p.A.

Via Enrico Melen, 77 16152 Genova, ITALY, Tel. +39 010 6547 1, Fax +39 010 6547 275, info@esaote.com



0123



Please visit us online for more information