

**EVOLution
upgrade
package: the
continuous
improvement
program for
your Esaote
ultrasound
system**



MyWork

MyPatient

MySystem

MyLab™

MyLab™ evolution

- Image quality
- Automatic NT
- System integration compliance
- Simplified workflow
- Remote control 2.0
- Multimedia capabilities

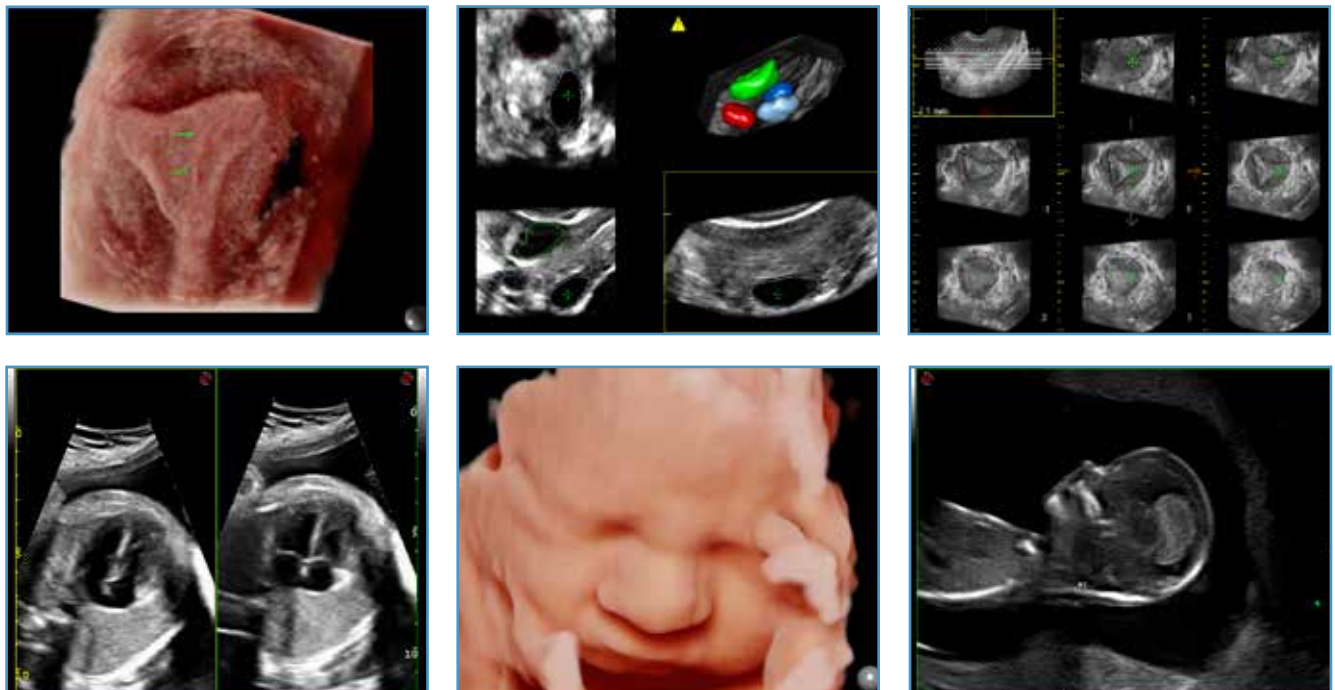


MyLab™ Class C

MyLab™ Twice

MyLab evolution offers an incredible set of new tools

- **AutoNT**, semi-automatic Nuchal Translucency measure
- **Wide angle** on convex, linear, and microconvex probes for enlarged field of view
- **XSTIC** spatio-temporal image correlation on **3D Endo probe** (BE1123)
- DICOM Structured Report (**DSR**) custom mapping and **Astraia** compatibility
- Annotate and measure improved workflow
- **microV** - high sensitivity, high spatial resolution, high frame rate hemodynamic analysis for micro-vascularization
- **MyLab™Remote 2.0** - Remote system user interface app to control your MyLab™ system via smartphone or tablet
- **MyLab™App** for smart data transfer to mobile devices
- **Exam pause/re-opening** for improved workflow and patient throughput
- **DICOM** Structured Report (DSR) custom mapping and Astraia compatibility
- Uninterruptible Power Supply (**UPS**) option



Thank you for your trust in Esaote

We listen to your needs and work every day to provide the most advanced technologies and innovative design for you to excel in patient care.



Technology and features are system/configuration dependent. Specifications subject to change without notice.

Information might refer to products or modalities not yet approved in all countries. For further details, please contact your Esaote sales representative. Astraia is a trademarks of astraia software gmbh. Product images are for illustrative purposes only.

Esaote S.p.A.

Via A. Siffredi, 58 16153 Genoa, Italy, Tel. +39 010 6547 1, Fax +39 010 6547 275, info@esaote.com
Via E. Melen, 77 16152 Genoa, Italy, Tel. +39 010 6547 1, Fax +39 010 6547 275, info@esaote.com



Please visit us online for more information