

Probes Family

Linear



AL2442
Vascular, Abdominal, Cardiac,
Ob/Gyn, Small Parts
Linear Array



LA332 appleprobe
Vascular, Pediatric, Small Parts,
Contrast Agents Procedure,
Variable-Band Linear Array



LA435
Vascular, Small Parts, Pediatric, Rheumatology,
Anaesthesiology
Linear Array



LA523
Vascular, Small Parts, Contrast Agents
Procedures, Rheumatology, Anaesthesiology
Variable-Band Linear Array



LA533 appleprobe
Small Parts, Vascular
Linear Array



SL1543 appleprobe
Vascular, Small Parts, Abdominal, Cardiac
Linear Array



SL2325
Small Parts, Vascular, Rheumatology,
Anaesthesiology
Wideband Linear Array



SL3116
Rheumatology, Anaesthesiology,
Vascular, Neonatal
Linear Array



SL3235 appleprobe
Small Parts, Vascular, Rheumatology,
Anaesthesiology
Wideband Linear Array



SL3323 appleprobe
Vascular, Small Parts, Rheumatology,
Anaesthesiology
Linear Array



SL3332 appleprobe
Vascular, Pediatric, Small Parts, Contrast
Agents Procedures
Variable-Band Linear Array



SL3413
Vascular, Small Parts, Rheumatology,
Anaesthesiology
Linear Array

Convex



AC2541
Abdominal, Ob/Gyn, Vascular
Convex Array



C5-2 R13
Cardiac, Pediatric, Vascular
Micro-Convex Array



CA123
Neonatal, Abdominal, Vascular
Micro-convex Array



CA430E
Abdominal, Ob/Gyn, Vascular,
Contrast Agents Procedures
Variable-Band Convex Array



CA431
Abdominal, Ob/Gyn, Vascular,
Contrast Agents Procedures
Variable-Band Convex Array



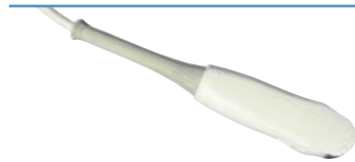
CA541 appleprobe
Abdominal, Ob/Gyn, Small Parts, Vascular, Cardiac,
Pediatric, Urology, Contrast Agents Procedures
Convex Array



CA631
Abdominal, Ob/Gyn, Vascular,
Contrast Agents Procedures
Variable-Band Convex Array



SB2C41
Abdominal, Ob/Gyn
Variable-Band Bi-scan Volumetric
Convex Array



SC3121
Vascular, Cardiac, Pediatric, Anaesthesiology
Convex Array



SC3123 appleprobe
Anaesthesiology, Pediatrics, Vascular
Micro-convex Array



SC3421 appleprobe
Abdominal, Ob/Gyn, Vascular, Anaesthesiology
Convex Array

Phased Array



PA023E
Cardiac Neonatal, Vascular
Phased Array



PA122E
Cardiac Pediatric, Vascular, Transcranial
Phased Array



PA240
Cardiac, Transcranial, Abdominal, Vascular,
Contrast Agents Procedures
Variable-Band Phased Array



SP2430
Cardiac, Transcranial, Abdominal, Ob/Gyn, Vascular
Phased Array



SP2442
Cardiac, Vascular, Neonatal Cephalic, Pediatric
Phased Array



SP3630
Cardiac, Transcranial, Abdominal, Vascular,
Contrast Agents Procedures
Variable-Band Phased Array

Endocavitary



EC123
Transvaginal, Transrectal, Contrast Agents Procedures
Variable-Band Micro-Convex Array



EC1123
Ob/Gyn, Urology, Transvaginal, Transrectal
Micro-Convex Array



SE3123
Ob/Gyn, Urology, Transvaginal, Transrectal
Micro-Convex Array

Volumetric



BC431
Abdominal, Ob/Gyn, Contrast Agents
Procedures
Variable-Band Bi-scan Volumetric Convex Array



BC441
Abdominal, Ob/Gyn, Contrast Agents
Procedures, 3D biopsy
Variable-Band Bi-scan Volumetric Convex Array



BE1123
Ob/Gyn, Urology, Transvaginal, Transrectal
Micro-Convex Array



BL433 appleprobe
Rheumatology, Small Parts, Vascular
Bi-scan Linear Array

Special



IOE323
Intraoperative, Vascular, Small Parts
Linear Array



IOT342
Intraoperative, Abdominal,
Small Parts, Pediatric, Vascular
T-shape Linear Array



LP323
Laparoscopic, Vascular
Linear Array - Articulation:
± up/down 90°; right/left 90°



S2MCW
Cardiac, Abdominal, Pediatric
Pencil Array - 2 MHz



S5MCW
Vascular
Pencil Array - 5 MHz



SHFCW
Vascular
High-frequency Pencil Array



ST2612
Cardiac
Phased Array



TEE022 Multiplane
Cardiac
Phased Array



TEE132 Multiplane
Cardiac, Pediatric
Phased Array



TRT33 Bi-plane
Transrectal, Transvaginal
Micro-Convex Array & Linear Array

Probe compatibility is system/configuration dependent. Specifications subject to change without notice. Information might refer to products or modalities not yet approved in all countries. The use of contrast agents in the USA is limited by FDA to left ventricle opacification and visualization of the left ventricular endocardial border. For further details, please contact your Esaote sales representative.

Esaote S.p.A. International Activities: Via di Cacciolle 15 - 50127 Florence, Italy
Tel. +39 055 4229 1 - Fax +39 055 4229 208 - international.sales@esaote.com - www.esaote.com

esaote
Creativity in Healthcare