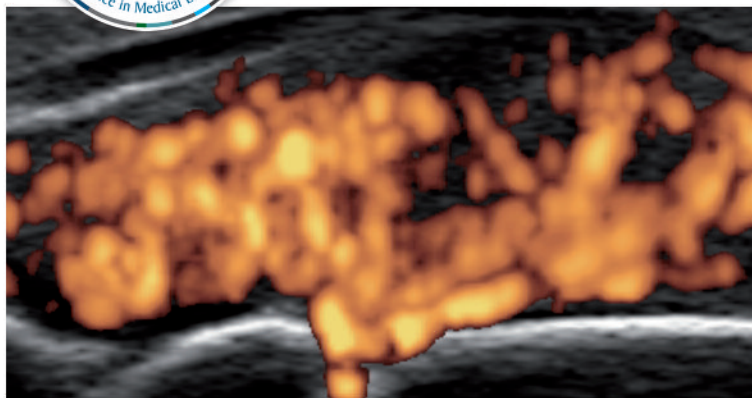




International School of Ultrasound in Rheumatology

Jesi (Ancona), Italy



Live educational course dates

The International School of Ultrasound in Rheumatology will be held on the following dates:

First course: 24-25 October 2014

Second course: 19-20 December 2014

Background and aims

In the last two decades, technological developments in both hardware and software of ultrasound equipment have been extraordinary. With the availability of linear probes with a frequency higher than 13 MHz, a detailed morphological visualization of the superficial soft tissues has become possible, and an ever-increasing number of rheumatologists is using ultrasound in their clinical practice. Several investigations have shown the value of this technique for both clinical and research purposes in rheumatology. The main indications of ultrasound in rheumatology include the assessment of patients with regional pain syndromes and chronic arthritis, the short-term therapy monitoring and the guidance for invasive procedures. In the near future it is likely to become an essential tool for the rheumatologist as echocardiography is for the cardiologist. At present, many rheumatologists want to become experienced with this imaging technique because they have understood its impact in the daily practice. However, the long learning curve is the main obstacle that hinders its widespread use in daily clinical practice. In fact, ultrasound image acquisition is operator dependent and a correct interpretation of sonographic images depends on several aspects such as a deep knowledge of ultrasonography anatomy and pathology.

The "International School of Ultrasound in Rheumatology" was conceived with the main aim to offer an intensive full immersion program of normal ultrasound anatomy of the musculoskeletal system and histopathology of the most important rheumatic diseases using high quality ultrasound equipment. The course framework will provide dedicated lectures and live demonstrations with healthy subjects which will precede the hands-on sessions with rheumatic patients under direct supervision of experienced tutors. Moreover, the delegates will have the opportunity to use recently developed devices (i.e. high-frequency volumetric probes) and to share new insights into various aspects of ultrasound in rheumatology.

Sonographic training will be specifically focused on aspects such as, grey-scale and Doppler settings, pre-erosive changes, acoustic microscopy, tips and tricks to get high quality images and early features of enthesitis.

Learning objectives

Attendance to this live educational course will enable the participants to:

- Understand the basic principles of ultrasound and the key machine settings
- Acquire ultrasound images using the scanning technique of the EULAR guidelines for musculoskeletal ultrasound in rheumatology
- Use tips and tricks in ultrasound scanning, especially useful to assess patients with chronic inflammatory arthritis
- Identify and describe the main ultrasound findings that characterize synovitis and enthesopathy
- Be aware of the pros and cons of ultrasound in daily rheumatologic practice

Target audience

Rheumatologists and all other physicians using musculoskeletal ultrasound in their daily clinical practice.

We value your opinion!

We are continually trying to develop and improve our educational initiative to provide you with cutting-edge learning activities.

After this educational event you will be receiving an online survey to help us to better tailor our future educational initiatives.

We thank you for participating!

Accreditation

An application has been made to the EACCME® for CME accreditation of the EXCEMED "International School of Rheumatology on 24-25 October, 2014 - 19-20 December, 2014 - Jesi (Ancona), Italy.

EXCEMED adheres to the principles of the Good CME Practice group.



General information

Scientific organizers

Walter Grassi

Full Professor of Rheumatology
Università Politecnica delle Marche
Jesi (Ancona), Italy

Emilio Filippucci

Senior Lecturer in Rheumatology
Università Politecnica delle Marche
Jesi (Ancona), Italy

Scientific secretariat

EXCEMED - Excellence in Medical Education
Salita di San Nicola da Tolentino, 1/b
00187 Rome, Italy
Associate Programme Manager: Sonia Rebutini
Tel.: +39-06-420 413 312
Fax: +39-06-420 413 677
E-mail: info@excemed.org
EXCEMED is a Swiss Foundation
with headquarters in 14, rue du Rhône, 1204 Geneva, Switzerland

Organising secretariat

Meridiano Congress International
Via Sapi, 6 - 00185 Rome (Italy)
Project Coordinator: Denise Rizzitelli
Phone: +39.06.88.595.210 - Fax: +39.06.88.595.234
E-mail: d.rizzitelli@meridiano.it

Register to EXCEMED website:
www.immunology.excemed.org

follow us on



www.twitter.com/EXCEMED

Faculty

Walter Grassi

Full Professor of Rheumatology
Università Politecnica delle Marche;
Jesi (Ancona), Italy

Emilio Filippucci

Senior Lecturer in Rheumatology
Università Politecnica delle Marche
Jesi (Ancona), Italy

Scientific programme

Scientific programme

Friday 24 October, 2014 - Friday 19 December, 2014

Session I

- 09.00 Introductory remarks.
- 09.30 Musculoskeletal ultrasound: the US equipment.
- 10.00 Ultrasound in Rheumatology: basic sonographic findings
- 11.00 Coffee Break
- 11.15 Practical session: basic orientation using the indications provided in the guidelines of the EULAR Working Group on Musculoskeletal Ultrasound
- 13.00 Lunch

Session II

- 14.30 Rheumatoid arthritis
- 15.30 Practical session on US examination of the small joints. Technical guidelines and scanning protocol.
- 16.45 Coffee Break
- 17.00 Practical session on US hand and wrist examination with rheumatoid patients
- 18.00 End of Day 1

Scientific programme

Saturday, 25 October, 2014 - Saturday, 20 December, 2014

Session III

- 08.30 Seronegative spondyloarthropathies
- 09.30 Practical session on US examination of the enthesis.
Technical guidelines and scanning protocol.
- 10.45 Coffee Break
- 11.00 Practical session on US examination with seronegative
spondyloarthropathies patients
- 13.00 Lunch

Session IV

- 14.30 Osteoarthritis and crystal-related arthropathies
- 15.30 Practical session on US examination of the large joints.
Technical guidelines and scanning protocol.
- 16.30 Coffee Break
- 16.45 ABC of sonographic guided procedures
- 17.15 Practical session on US examination with osteoarthritis
and crystal-related arthropathies patients
- 18.15 End of the course

General information

Dates

24-25 October, 2014

19-20 December, 2014

Venue

Jesi (Ancona), Italy

Language

The official language of the conference will be English.

Registration fee

The registration fee is € **600,00**.

This fee includes:

- Scientific session
- Educational material
- Certificate of attendance
- Coffee breaks and lunches

For any registration and accommodation need please contact:

Denise Rizzitelli c/o Meridiano Congress International

Via Sapi, 6 - 00185 Rome, Italy

T +39 (0)6 88 595 210 - F +39 (0)6 88595 234

E-mail: d.rizzitelli@meridiano.it

All EXCEMED programmes are organized solely to promote the exchange and dissemination of scientific and medical information. No forms of promotional activities are permitted. This programme is made possible thanks to an educational grant received from Esaote.



Improving the patient's life through medical education
www.excemed.org



EXCEMED - Excellence in Medical Education

Representative Office

Salita di San Nicola da Tolentino 1/B 00187 Rome, Italy.

T +39.06.420.413, F +39.06.420.413.677

Headquarters

EXCEMED

14, Rue du Rhone, 1204 Geneva, Switzerland

