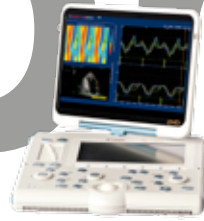


The Imaging Expert's **Choice**

Alpha



Seven



[www.esaote.com](http://www.esaote.com)

**esaote**  
veterinary

# Top Performance & Specialism

**MyLab<sup>™</sup>Alpha Mobile**



## Features

- 2 transducer connectors
- 13.3" 90° rotatable widescreen monitor
- Anti-theft security lock
- Long lasting / fast charging battery
- Weight: 7.3 kg (including battery)
- Compact trolley with 2 extra transducer connectors
- Trolley for mobile services
- 15 seconds battery based start-up time



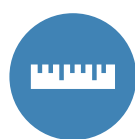
### Patient ID/Owner Name

The patient demographic screen is dedicated to the veterinary environment with fields for the animal's name as well as species and breed.



### Application Selection

The veterinary application software makes it easy to choose from a list of applications before starting the examination. After selecting the application, the system automatically displays the presets corresponding to the chosen purpose. A dedicated application icon is shown on the screen, confirming that the correct settings are selected.



### Measurements and Reports

Confirming Esaote's dedication to the veterinary world, complete veterinary measurement packages, including abdomen, cardiology and reproductive gestational calculations provide easy exam documentation.



### Body Marks

Using a body mark to show the exact position where the scan has been done is useful. But being able to indicate this with a body mark that actually resembles the scanned species is even better.



### Image Quality

With both Esaote systems, in any application and with any probe, you can rely on excellent image quality to aid fast and accurate diagnosis.



### Modularity

Both systems can be configured to your needs. The base is the B/W version with the OPUS (One Probe Ultrasound Solution) SC3123 Micro Convex transducer. Optional standard transducers are available; the systems can even grow in terms of quality with the extended licence transducers and in terms of functionality (Advanced Cardiology) with the Phased Array transducers.

The high-end, portable MyLabAlpha and console model MyLabSeven, offer the demanding imaging expert a combination of best image quality and complete functionality. Their wide range of transducers for all small animals, exotics, equine and farm animal applications covers imaging and Doppler at the highest level.



### MyLab™Desk<sup>3</sup>

With MyLab™Desk<sup>3</sup> installed on your PC you can easily copy your total archive from the ultrasound system for convenient reviewing and image processing.



### Wireless Windows® and DICOM Connectivity

Both systems are designed for limitless wireless connectivity and can be easily implemented in any Windows® or DICOM environment. Being equipped with wireless connectivity, easy networking, printing and communication with external PC's are just one click away.



### Remote Trouble Shooting and Services

Your system will be recovered in the shortest time possible. Connected to the internet Esaote's Service Team can easily troubleshoot any issues, perform proactive maintenance and monitor performance.



### XView+

Reduction of speckle and noise, adjustable by the operator to produce an optimal personalised image.



### XStrain

This makes it possible to estimate and quantify endocardial velocities of contraction and relaxation of the heart.



### ElaXto

The ElaXto software enables non-invasive assessment of tissue elasticity.



### CnTI™

With revolutionary real-time CnTI technology it is possible to implement innovative contrast media ultrasound procedures.

## Office MyLab™Seven



### Features

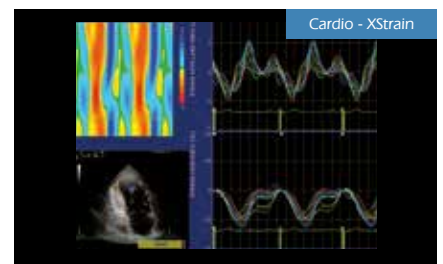
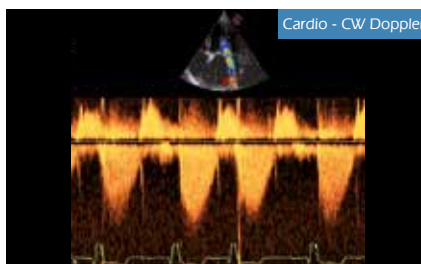
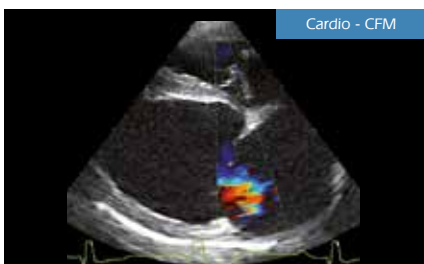
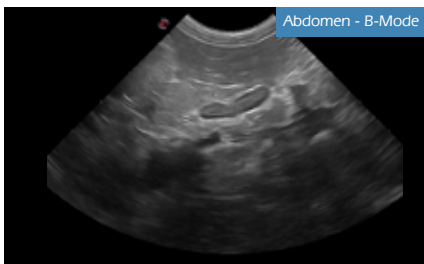
- 4 transducer connectors
- 19" rotatable wide screen monitor
- Sliding full alphanumeric keyboard
- Four 360° rotatable wheels
- Height adjustable and rotatable keyboard
- 15 seconds battery based start-up time

# Small Animals



## Stunning images within reach

MyLabAlpha as well as MyLabSeven provide impressive image quality in a wide range of applications. Besides B-Mode, M-Mode and Doppler-Imaging, the systems offer multiple advanced technologies to meet every clinical need.



For over 30 years, as market leader, Esaote has monitored the imaging needs of the veterinarian in their daily practice. Full, dedicated functionality, high image quality and easy operation are our cornerstones. Both the MyLabAlpha as well as the console version MyLabSeven are designed to fulfill all of the small animal veterinarian's expectations.

# Transducers



## SC3123

Abdominal imaging and basic cardio in small animals

- 9-4 MHz
- Up to 93° scan angle



## AC2541

Abdominal imaging, large dogs and large sized exotics

- 8-1 MHz
- Up to 63° scan angle



## SL1543

Transducer for MSK in dogs and cats, and general imaging of exotics

- 13-4 MHz
- 47 mm



## SL3116

Visualizing very superficial structures in dogs, cats and small exotics

- 10-22 MHz
- 3 mm



## SP2430

Low frequency phased array transducer for advanced cardiac examination in larger animals

- 4-1 MHz
- Up to 87° scan angle



## P2 5-13

High frequency phased array transducer for advanced cardiac examinations in small sized species

- 5-13 MHz
- Up to 89° scan angle



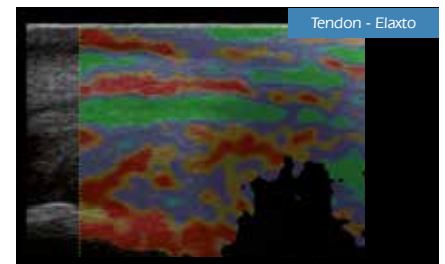
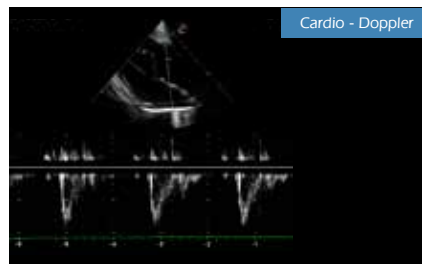
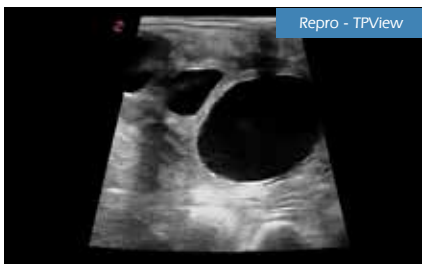
## ST2613

Transesophageal echocardiography

- 9-4 MHz
- Up to 90° scan angle

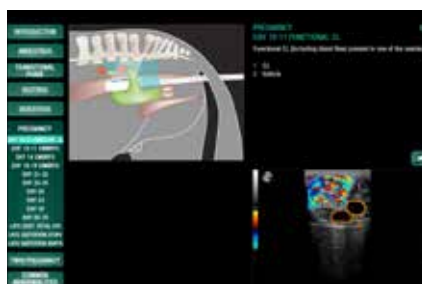
Biopsy guides are optional available for all relevant transducers

# Equine & Farm Animals



## Libraries

MyLibrary is an innovative application dedicated tool integrated in both systems for users' reference, which includes anatomical atlas and "How to do" reference images, so users can instantly and easily have access to a fast, thorough and application specific educational environment.



The MyLabAlpha and MyLabSeven cover all possible equine and farm animal applications. Specific transducers are available for reproduction scanning, tendons and ligaments, cardiac and general imaging.

## Transducers



### SL1543

Tendons and ligaments

- 13-4 MHz
- 47 mm



### L3-11

Low frequency linear transducer for visibility of deep structures of tendons and ligament in equine

- 3-11 MHz
- 40 mm



### SV3513

For all frequently occurring cases in daily large animal practice. This probe is excellent for reproductive and basic tendon scanning.

- 10-5 MHz
- 50 mm



### IL4-13

Very small endo rectal transducer for scanning equine MSK

- 4-13 MHz
- 30 mm



### SC3123

Specific transducer for hoof and pastern scanning

- 9-4 MHz
- Up to 93° scan angle



### AC2541

Trans-abdominal; reproduction scanning, general imaging and MSK

- 8-1 MHz
- Up to 63° scan angle



### SP2430

Low frequency phased array transducer for advanced cardiac examination in equine and larger animals

- 4-1 MHz
- Up to 87° scan angle



## Join the global leader in veterinary imaging

Esaote is 'the' pioneer in ultrasound and are the MRI in the veterinary field. We have over 30 years of market leadership and preferred supplier for many veterinary practices, clinics and research centers, as well as for many zoos and wildlife institutions.

Offering perfect product in term of quality, functionality, price, service and education, combined with a deep understanding of the veterinarians' needs, will guarantees our top position in the veterinary imaging market.

Please challenge us with your imaging, ultrasound and/or MRI needs in your daily practice or specific projects. We would welcome being your imaging partner.

[www.esaote.com/veterinary](http://www.esaote.com/veterinary)

160000056MAK Ver. 04



**Esaote S.p.A.**  
Via A. Siffredi, 58 16153 Genoa, Italy, Tel. +39 010 6547 1, Fax +39 010 6547 275, info@esaote.com  
Via E. Melen, 77 16152 Genoa, Italy, Tel. +39 010 6547 1, Fax +39 010 6547 275, esaote@pec.esaote.com



Windows® is a registered trademark of Microsoft Corporation. Technology and features are system/configuration dependent.  
MyLab™ Desk SW only viewer is not intended or provided for an official diagnostic interpretation.  
Specifications subject to change without notice. Information might refer to products or modalities not yet approved in all countries.  
For further details, please contact your Esaote sales representative.