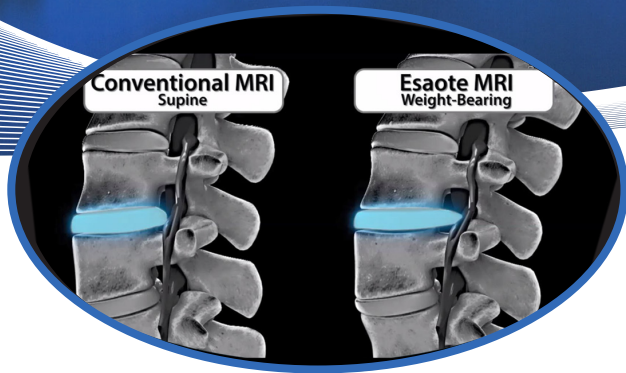


# Naples, Florida

## Naples Bay Resort & Marina



Sponsored by



## 3rd International Meeting on **WEIGHT-BEARING MRI** October 5, 2019

Weight-bearing MRI can uncover biomechanical stresses not revealed through supine imaging alone. This conference features speakers from around the world discussing their experience with weight-bearing MRI and its impact on their patients and practices.

### 2019 CONFERENCE SPEAKERS



**EVENT CHAIRMAN**  
RICHARD J ROLFES, MD  
University of Louisville, USA



SCOTT ALLEN BARBOUR, MD  
Orthopedic Surgeon  
Atlanta, GA, USA



PROFESSOR MIKAEL BOESEN, MD, PhD  
Department of Radiology and The Parker Institute  
Copenhagen, Denmark



JAMES L. LYNCH, MD  
Board-Certified Spinal Neurosurgeon  
Spine Nevada Minimally Invasive Spine Institute, USA



PROFESSOR GIUSEPPE MONETTI, MD  
University of Bologna, Italy



**EVENT CO-CHAIRMAN**  
PROFESSOR GIUSEPPE GUGLIELMI, MD  
Department of Radiology  
University of Foggia, Italy



PROFESSOR ANTONIO BARILE, MD  
Department of Radiology  
University of L'Aquila, Italy



RON GARDNER MD  
Orthopedic Surgeon  
Gardner Orthopedics, Fort Myers, FL, USA



GILBERT H. MAULSBY, MD  
Department of Radiology  
Proscan Imaging, USA



JUDITH TURNER  
VP, Sales, Marketing & Operations  
Proscan Imaging, USA

For more information, contact:  
giacomo.pedretti@esaote.com  
or sheila.hughes@esaote.com

3rd International Meeting on

# WEIGHT-BEARING MRI

Naples Bay Resort & Marina, Naples FL

October 5, 2019

You are invited to join your colleagues at the beautiful Naples Bay Resort & Marina in Naples, Florida. The 3rd Annual International Meeting on Weight-Bearing MRI brings together physicians from around the world to discuss their experiences and the latest findings on the utilization of weight-bearing MRI for diagnosis and treatment planning.

You will learn how Weight-Bearing MRI can:

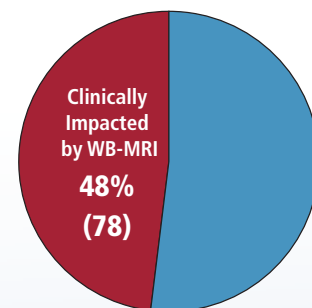
- Facilitate procedure approvals
- Improve surgical planning
- Differentiate your practice

## Recent Weight-Bearing MRI Clinical Experience

A recent clinical study showed that in patients scheduled for spine intervention, Weight-Bearing MRI had a clinical impact in 48% of the cases.

### Treatment Plan Determined or Modified by WB-MRI

- |   |        |
|---|--------|
| • Performed the surgery with confidence       | 44 pts |
| • Another additional surgery                  | 22 pts |
| • Modified or reduced extent of the operation | 12 pts |



163 Spine Surgery Patients

“Weight-Bearing MRI provides more significant information which could help establish a proper diagnosis, thereby leading to an accurate and appropriate surgical plan.”

*Source: European Society of Musculoskeletal Radiology (2018)  
H.-S. Kim, G. Choi, W.H. Kim et al. ESSR 2018, P-0027*

For more meeting information, contact:  
[giacomo.pedretti@esaote.com](mailto:giacomo.pedretti@esaote.com) or [sheila.hughes@esaote.com](mailto:sheila.hughes@esaote.com)

Sponsored by



NEVER STOP SEEING THE UNSEEN