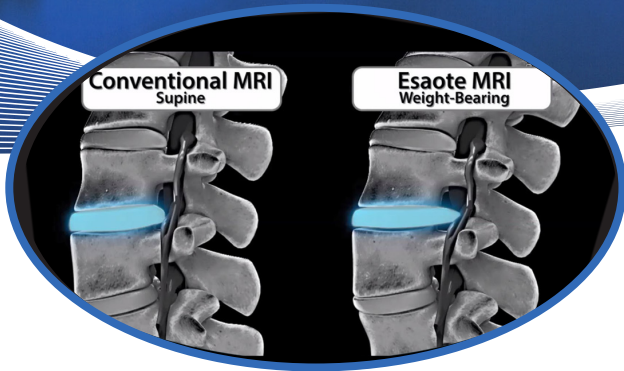


# Naples, Florida

## Naples Bay Resort & Marina



Sponsored by



# 3rd International Meeting on **WEIGHT-BEARING MRI** October 5, 2019

Weight-bearing MRI can uncover biomechanical stresses not revealed through supine imaging alone. This conference features speakers from around the world discussing their experience with weight-bearing MRI and its impact on their patients and practices.



## 2019 CONFERENCE SPEAKERS



**EVENT CHAIRMAN**  
RICHARD J ROLFES, MD  
Proscan Imaging, USA



**EVENT CO-CHAIRMAN**  
PROFESSOR GIUSEPPE GUGLIELMI, MD  
Department of Radiology  
University of Foggia, Italy



**PROFESSOR MIKAEL BOESEN, MD, PhD**  
Department of Radiology and The Parker Institute  
Copenhagen, Denmark



**PROFESSOR ANTONIO BARILE, MD**  
Department of Radiology  
University of L'Aquila, Italy



**SCOTT ALLEN BARBOUR, MD**  
Surgeon  
Barbour Orthopaedics & Sports Medicine  
Atlanta, GA, USA



**RON GARDNER MD**  
Orthopedic Surgeon  
Gardner Orthopedics, Fort Myers, FL, USA



**JAMES L. LYNCH, MD**  
Board-Certified Spinal Neurosurgeon  
Spine Nevada Minimally Invasive Spine Institute, USA



**GILBERT H. MAULSBY, MD**  
Board-Certified Diagnostic Radiologist  
Medical Director, Proscan Imaging, USA



**PROFESSOR GIUSEPPE MONETTI, MD**  
University of Bologna, Italy



**JUDITH TURNER**  
VP, Sales, Marketing & Operations  
Proscan Imaging, USA

Meeting information:  
[giacomo.pedretti@esaote.com](mailto:giacomo.pedretti@esaote.com)

3rd International Meeting on

# WEIGHT-BEARING MRI

Naples Bay Resort & Marina, Naples FL

October 5, 2019

You are invited to join your colleagues at the beautiful Naples Bay Resort & Marina in Naples, Florida. The 3rd Annual International Meeting on Weight-Bearing MRI brings together physicians from around the world to discuss their experiences and the latest findings on the utilization of weight-bearing MRI for diagnosis and treatment planning.

You will learn how Weight-Bearing MRI can:

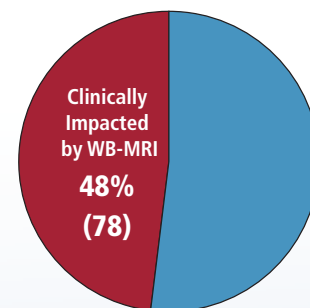
- Facilitate procedure approvals
- Improve surgical planning
- Differentiate your practice

## Recent Weight-Bearing MRI Clinical Experience

A recent clinical study showed that in patients scheduled for spine intervention, Weight-Bearing MRI had a clinical impact in 48% of the cases.

### Treatment Plan Determined or Modified by WB-MRI

- |   |        |
|---|--------|
| • Performed the surgery with confidence       | 44 pts |
| • Another additional surgery                  | 22 pts |
| • Modified or reduced extent of the operation | 12 pts |



163 Spine Surgery Patients

“Weight-Bearing MRI provides more significant information which could help establish a proper diagnosis, thereby leading to an accurate and appropriate surgical plan.”

*Source: European Society of Musculoskeletal Radiology (2018)*

*H.-S. Kim, G. Choi, W.H. Kim et al. ESSR 2018, P-0027*

### MEETING REGISTRATION AND INFORMATION

Online registration: [www.esaote.com/adv/weight-bearing-mri-2019/](http://www.esaote.com/adv/weight-bearing-mri-2019/)

Meeting information: [giacomo.pedretti@esaote.com](mailto:giacomo.pedretti@esaote.com)

Sponsored by



NEVER STOP SEEING THE UNSEEN