



NEVER STOP ELEVATING

YOUR VET EXPERIENCE.

MYLAB™ VET PRODUCT LINE

MyLab™ X8VET **DESIGNED TO BE UNIQUE**

A new era of ultrasound is here: new system software helps you to accelerate your workflow by setting customizable options.

Attain immediate results, and exploit all features of the vet-dedicated platform.



NEVER STOP ELEVATING YOUR VET EXPERIENCE.



MyLabX8 VET



Dedicated VET software and probes



Windows® 10



Easy to move



Zero-click technology



Microvascularization detection with microV



Quick start-up



Full-screen visualization



Highly responsive capacitive touchscreen

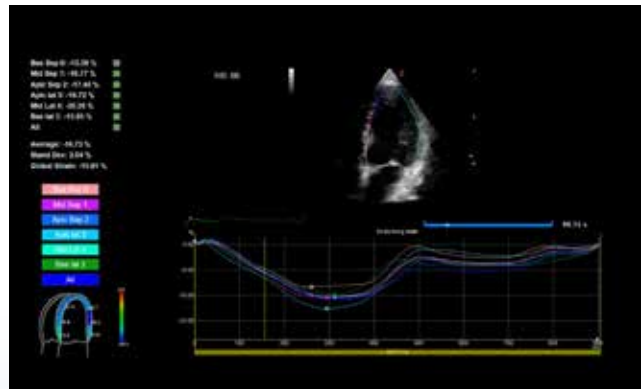


Esaote S.p.A. - sole-shareholder company
Via Enrico Meloni 77, 16152 Genova, ITALY, Tel. +39 010 6547 1, Fax +39 010 6547 275, info@esaote.com

Windows® is a registered trademark of Microsoft Corporation. MyLab is a trademark of Esaote spa.
Technology and features are system/configuration dependent. Specifications subject to change without notice. Information might refer to products or modalities not yet approved in all countries.
Product images are for illustrative purposes only. For further details, please contact your Esaote sales representative.



Panther - Nerve block injection - Needle enhancement



Dog - Heart - Strain calculation

- **24 MHz probe** with high-resolution images
- **Needle enhancement** - a valuable aid to interventional practice
- **ElaXto** - non-invasive assessment of tissue elasticity
- **CnTI™** - advanced technology for Contrast Enhanced Ultrasound (CEUS) imaging
- **QPack** - multimodality quantification tool for CnTI™, Color & Power Doppler
- **Zero-click EF** - automatic ejection fraction computation
- **XStrain™** - endocardial velocity quantification & heart deformation detection
- **Up to 5 probe connection ports** - enabling fast probe switch to adapt to the most demanding clinical environments
- **easyMode* and easyColor*** - "one-touch" image optimization through intelligent real-time algorithms
- **On-board battery**** - enabling an autonomous cart base

* patent pending
** optional