



Adnex-IOTA

An effective model to assess the malignancy of adnexal masses



Supporting tool

helping to differentiate between benign and malignant masses



Effective care

providing information to support clinical decision-making in patient management



Structured reporting

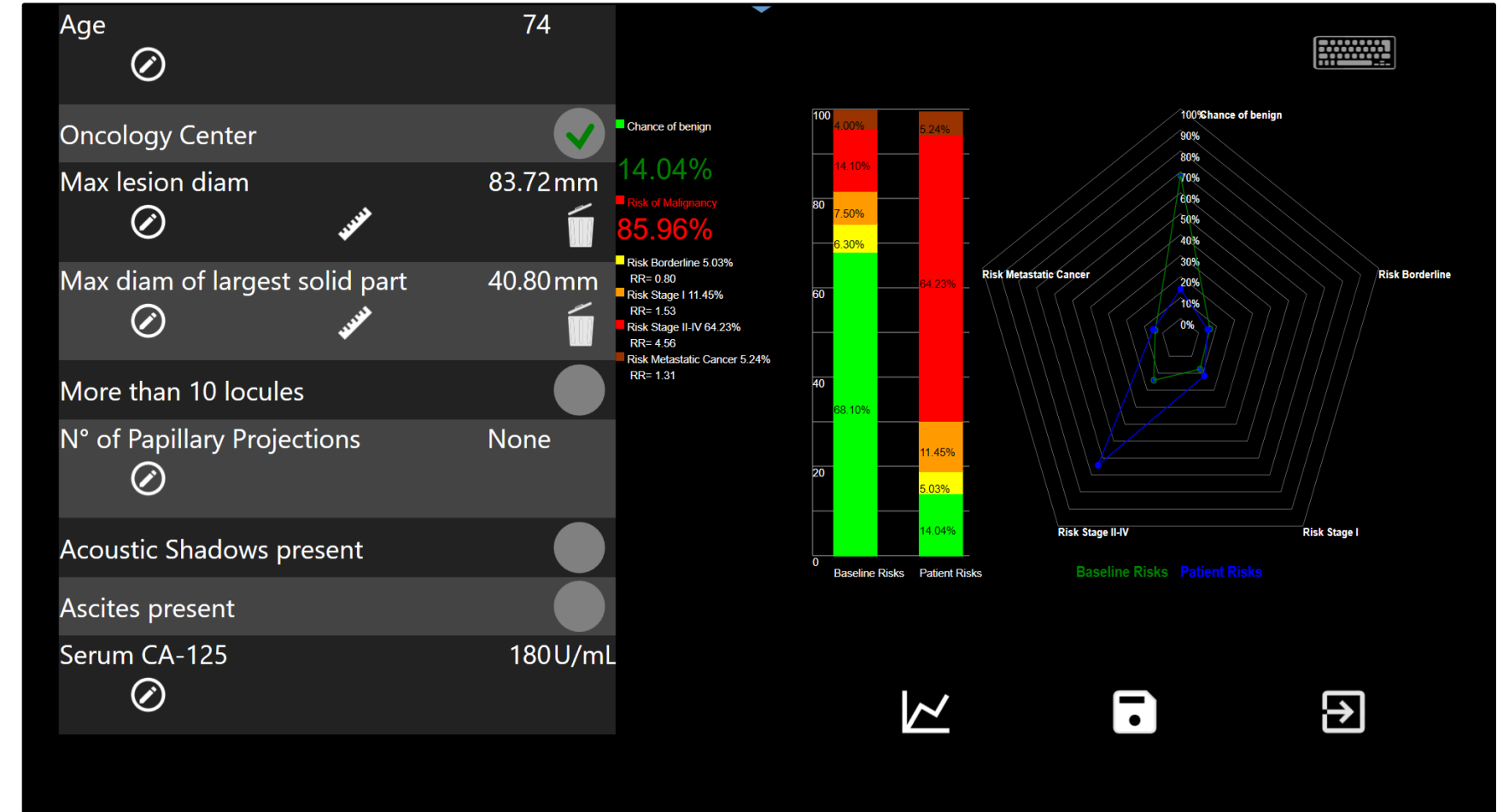
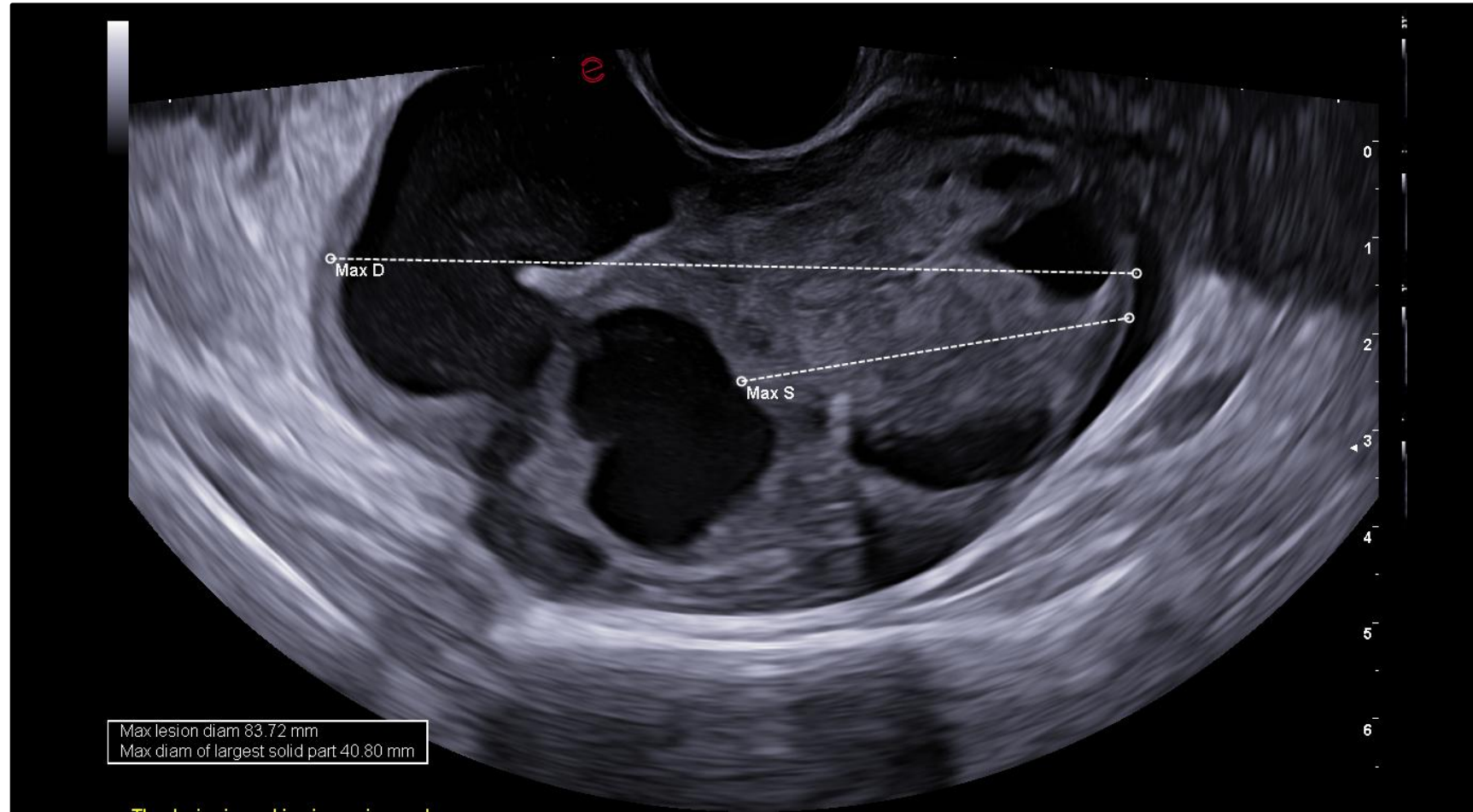
providing an objective and organized description of ovarian masses



Clinically validated

developed by the IOTA group and widely adopted internationally since 2014

Adnex-IOTA



- Integrates 9 clinical and ultrasound predictors, entered by the user, including serum CA-125 levels
- Offers easy and intuitive graphical representation of malignancy and benignity likelihood
- Estimates a percentage-based risk for an adnexal mass to be:
 - Benign tumor
 - Borderline tumor
 - Stage I cancer
 - Stage II–IV cancer
 - Secondary metastatic cancer
- Fully integrated into Esaote systems*

Bibliography

1. Van Calster B, et al. Practical guidance for applying the ADNEX model from the IOTA group to discriminate between different subtypes of adnexal tumors. *Facts Views Vis Obgyn.* 2015;7(1):32-41. PMID: 25897370; PMCID: PMC4402441
2. Barreñada L, et al. ADNEX risk prediction model for diagnosis of ovarian cancer: systematic review and meta-analysis of external validation studies. *BMJ Med.* 2024 Feb 17;3(1):e000817. doi: 10.1136/bmjmed-2023-000817. PMID: 38375077; PMCID: PMC10875560.
3. <http://www.iotagroup.org/> [last access on February 2026]

*Available from MyLab™A70 onwards



Esaote S.p.A. - sole-shareholder company

Via Enrico Meloni 77, 16152 Genoa, ITALY, Tel. +39 010 6547 1, Fax +39 010 6547 275, info@esaote.com

MyLab™ is a trademark of Esaote spa. Technology and features are device/configuration-dependent. Specifications subject to change without notice. Information might refer to products or modalities not yet approved in all countries. Product images are for illustrative purposes only. For further details, please contact your Esaote sales representative.