



Aquila VET

PRO



ISO 13485: 2003 ISO 9001: 2000

Esaote S.p.A.
International Activities: Via di Caciolle, 15 50127 Firenze, Italy, Tel. +39 055 4229 1, Fax +39 055 4229 208, international.sales@esaote.com

www.esaote-piemedical.com

France
Esaote France S.A.R.L.
22, rue Pierre Grange, 94124 Fontenay-sous-Bois
Tel. +33 1 4871 2525, Fax +33 1 4871 3630, esaote.france@wanadoo.fr

Germany
Esaote Biomedica Deutschland GmbH
Ludwigstraße 47, 85399 Hallbergmoos
Tel. +49 811 99 86 49 0, Fax +49 811 99 86 49 20, esaote@esaote.de

Spain
Esaote Espana S.A.
Avda San Sebastian, s/n 08960 Sant Just Desvern, Barcelona
Tel. +34 93 473 2090, Fax +34 93 473 2042, info@esaote.es

The Netherlands and Belgium
Pie Medical Benelux B.V.
P.O. Box 1132, 6201 BC Maastricht
Tel. +31 43 3824650, Fax +31 43 3824651, benelux@pie.nl

Italy
Medmark S.r.l.
Via C. Colombo 49, 20090 Trezzano S.N. (MI)
Tel. +39 02 48463147, Fax +39 02 4459032, medmark@esaote.com

USA
Biosound Esaote Inc.
8000 Castleway Drive, P.O. Box 50858, Indianapolis, IN 46250
Tel. +1 317 813 6000, Fax +1 317 813 6600, info@biosound.com

China
Esaote China Ltd
18/F, 135 Bonham Strand trade Centre
135 Bonham Strand, Sheung wan, Hong Kong
Tel. +852 2545 8386, Fax +852 2543 3068, esaote@esaotechina.com

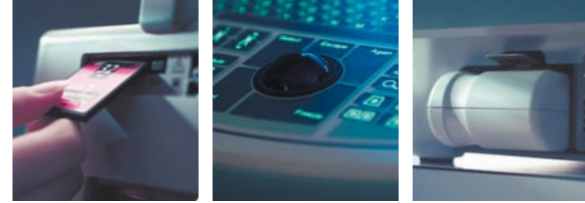
Russian Federation and CIS
Esaote S.p.A.
18 Leningradsky prospekt, off. 5 and 6, Moscow 125040
Tel. +7 495 232 0205, Fax +7 495 232 1833, info@esaote.ru

Argentina
Esaote Latinoamérica S.A.
San Martin 551, Cuerpo "C", Piso 8, (C1004AAK) Buenos Aires
Tel. +54 11 4326 1832, Fax: +54 11 4328 1245, info@esaote.com.ar



Aquila VET **PRO**

The Wise Choice



The Wise Choice



The Aquila Pro offers small and mixed animal veterinarians worldwide a high quality black & white ultrasound scanner. The Aquila Pro provides the image quality needed to make reliable diagnoses, while remaining easy to operate and transport; necessities in the busy environment of the modern veterinary practice.

The various available options and programmable settings, as well as the wide choice of linear and convex probes (up to 10 MHz) and specific veterinary measurement programs make the system ideal for applications ranging from pregnancy detection to backfat measurements.



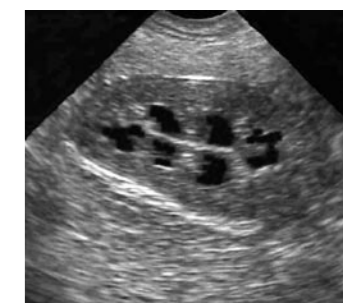
Inside...

- Reproductive imaging (pregnancy detection, ovaries, fetal age/sexing), thoracic and abdominal cavity, tendons, small parts, cardiology and animal science
- Fetal age tables and report pages for equine, bovine, sheep, swine, llama, feline/canine
- Measurement programs for tendons, cardiology and animal science
- Cine memory
- Total Image Focus
- CR11 Technology

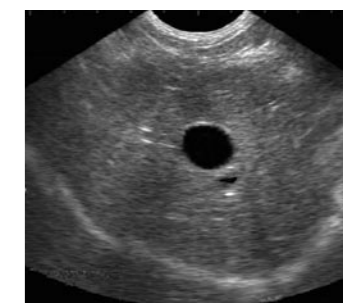


...and out!

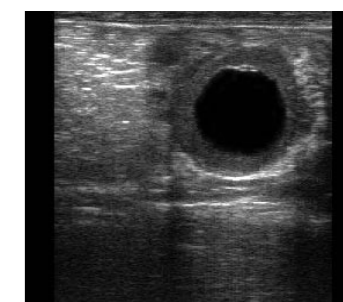
- Integrated, backlit keyboard
- Portable (11 kg, 24 lbs.)
- 9" monitor
- Two probe connectors
- 32 Mb PC-compatible memory card for image storage (up to 160 images); optional max. 512 Mb
- Battery or mains operated
- Ergonomic, compact design
- Available with or without trolley
- Optional biopsy kits



Kidney of a dog



Liver and gallbladder of a dog



Cystic ovary of a cow



Pathologic bladder in a mare