



NEVER STOP  
SEEING THE UNSEEN.

esaote

ULTRASOUND /

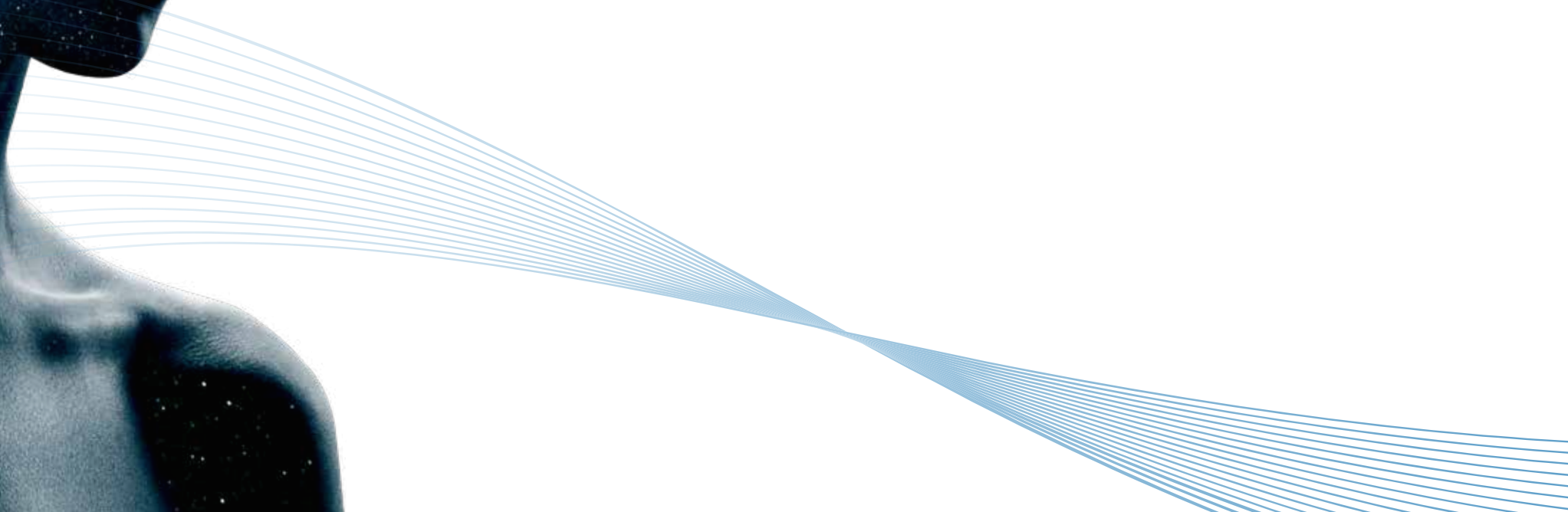
DEDICATED MRI /

HEALTHCARE IT /

SERVICE SOLUTIONS /



**WE HAVE  
A UNIVERSE  
TO EXPLORE.**



# N E V E R   S T O P S E E I N G   T H E   U N S E E N .

Human beings are ambitious creatures, who made research their purpose. In ancient times, they used to observe the universe and its silent movements, wondering about their destiny. Then, that universe became a destination to explore. And Esaote reached it as well, transforming this tireless research into a corporate philosophy: to see what others didn't see and to be pioneers of discovery. Without stopping.

But there is a universe much closer to us, equally multi-faceted and with many things to dig into: the human body. Just like space, some body parts are not visible to the naked eye: that's why we need Esaote's advanced technology to be able to explore them and unlock their secrets. This technology is constantly improved to support medical science, contributing to a better future for everyone and finally making what is essential visible to the eye.

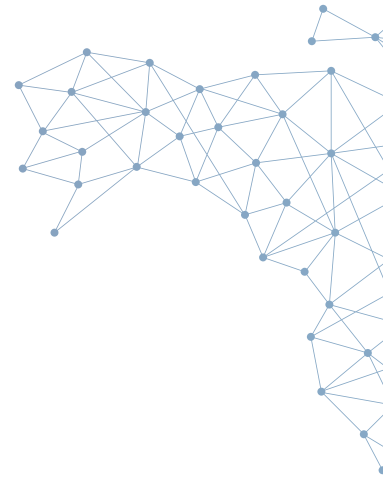
*Esaote is One  
of the World's  
Leading Providers*  
of **Diagnostic  
Imaging  
Solutions**

The Esaote Group is a leader in the biomedical equipment sector, in particular in the areas of ultrasound, dedicated MRI, and software for managing the diagnostic process.

Headquartered in Genoa, Italy, the Group has its production and research units in Italy (Genoa and Florence) as well as in the Netherlands (Maastricht) and it is active in around 80 countries worldwide.

Esaote has always invested 8-10% of its total turnover in research and development, a sector in which about 20% of its employees work. Esaote, which proudly collaborates with clinical and scientific research centers and universities around the world, has received numerous accolades for its performance in terms of innovation, its investments in research, human capital and technology, as well as for extraordinary product design.

Information on Esaote and its products is available at **[www.esaote.com](http://www.esaote.com)**





**ULTRASOUND**



**DEDICATED MRI**



**HEALTHCARE IT**



**SERVICE SOLUTIONS**





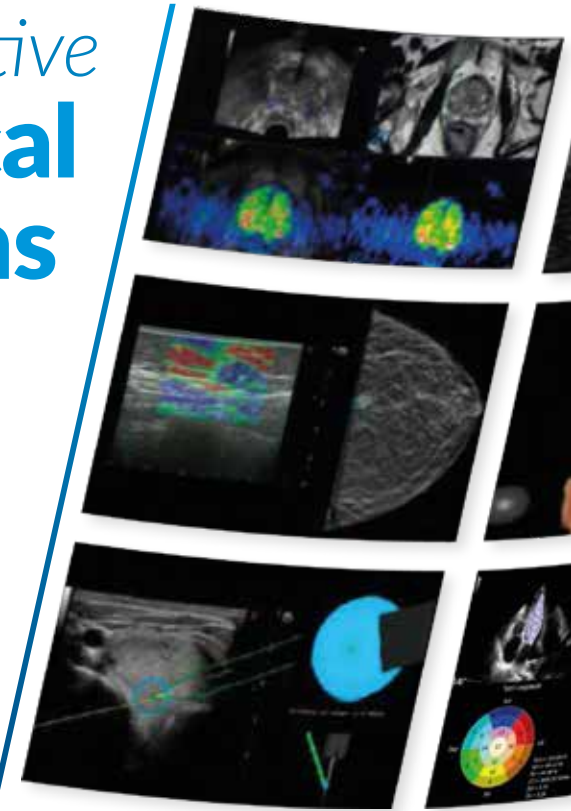


# Innovative Clinical Solutions

*Prostate Biopsy with  
Virtual Navigator*

*Virtual Navigator  
BodyMap & ElaXto  
on Breast*

*Virtual Navigator Virtual  
Biopsy on Thyroid*



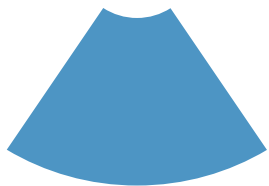
*microV on Kidney  
Ob 3D Baby Face  
CV XStrain4D*

*QPack CnTI™ on Liver  
QElaXto 2D on Liver  
Musculoskeletal HD  
Zoom with High  
Frequency Imaging and  
microV*

*Q-Spine Analysis  
Flexion-Extension  
Metal Implant Imaging*

*Enterprise IT Systems  
Workflow and digital image  
management in Radiology,  
Cardiology, and Diagnostic Imaging  
Cardiovascular Analysis*





# Ultrasound

Outstanding Product Line

Our brand new ultrasound line has been completely renewed, and offers a wide range of systems from the straightforward portable to the more advanced high-end platforms, focusing on improving patient care.

- **Cutting-edge integrated technologies**
- **Ergonomics and comfort**
- **Extended connectivity**



**INNOVATION**

● MyLab™X9



3-year  
service  
coverage\*



**POWER**

- MyLab™9 eXP
- MyLab™9





**PRODUCTIVITY**

- MyLab™X75



3-year  
service  
coverage\*

**VERSATILITY**

- MyLab™X7
- MyLab™X6
- MyLab™X5



**PERFORMANCE**

- MyLab™X8 eXP
- MyLab™X8



**MOBILITY**

- MyLab™Omega
- MyLab™Sigma





# Dedicated MRI

Changing the MRI Perspective

Our MRI systems can fit in unusual settings. They are able to reveal specific pathologies that are not visible with traditional exams, and deliver enhanced clinical evidence.

**DEDICATED TO  
EFFICIENCY**



Weight-Bearing MRI

Isotropic 0,4 mm

MAR



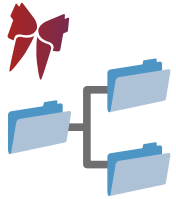
- **High image quality**
- **Advanced features**
- **Innovative Weight-Bearing MRI capabilities**

**DEDICATED TO  
COMFORT**



**DEDICATED TO  
ADVANCED  
DIAGNOSTICS**





# Healthcare IT

Back to Human Intelligence

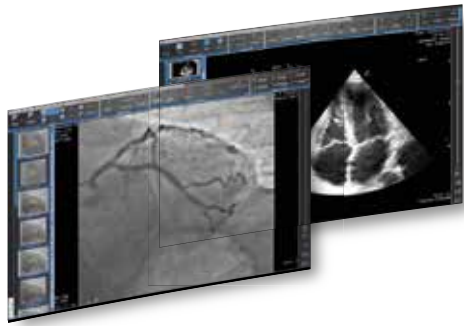
Our Healthcare IT solutions are designed to improve sensitivity in diagnosis. AI is used to help professionals increase their confidence, by facilitating decision-making and favouring dialogue.

## **SUITESTENSA ENTERPRISE IMAGING**

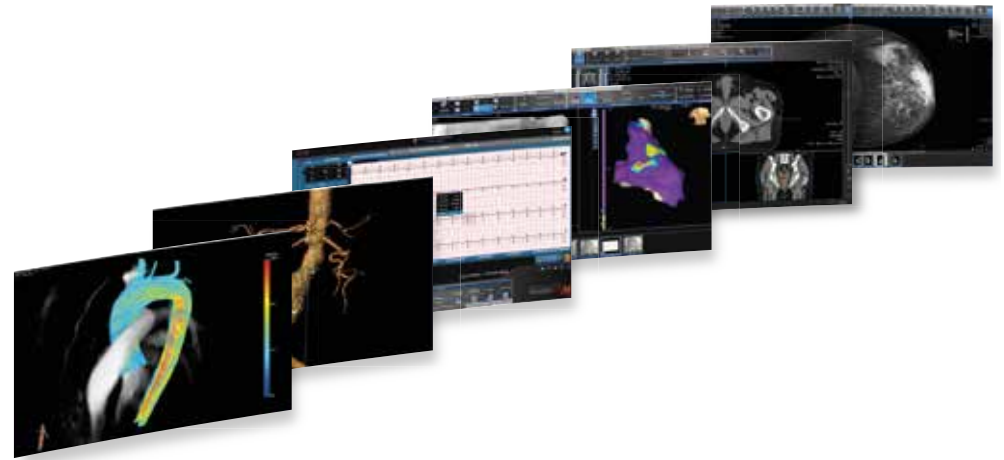
- VNA
- Enterprise PACS and CPACS
- Cloud Solutions
- Mobile & Web Access
- Patient Portal



## SUITESTENSA CARDIOVASCULAR



- CVIS
- Review Cardio
- Cath Lab
- Arrhythmology
- Echo
- ECG
- Cardiac Surgery
- Endovascular Surgery
- Check Up & Patient Hospitalization



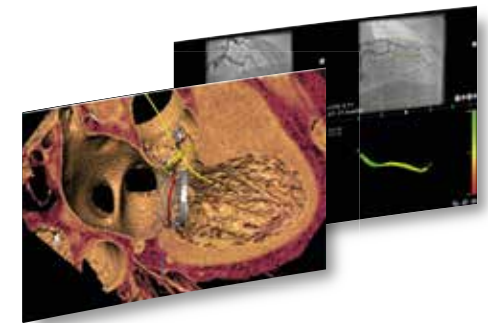
## CARDIOVASCULAR ANALYSIS

- CAAS LVA, QCA, vFFR
- 3mensio pre-op tools for TAVI, LAA, Mitral Valve
- 3mensio Vascular
- CAAS MR for Cardiac MR complete analysis

## SUITESTENSA RADIOLOGY AND DIAGNOSTIC IMAGING



- RIS
- Review
- Breast Imaging and Screening
- Interventional Radiology
- Radiotherapy EPR





# From installation to maintenance

We have the Right Service for You

Our mission is to protect and maximize the performance of your system while increasing the profitability of your investment.



*Pre-Installation  
Site Surveys  
and Site Planning*



*Installations*



*Maintenance  
Agreements*



*Training and  
Applications  
Support*

## @Care

**DISCOVER OUR @Care  
PROTECTION PLAN**

- *Your Service coverage beyond standard warranty*
- *The perfect solution for ensuring operational effectiveness and extending the lifespan of your system*



### S@RENITY PROGRAM\*

- The 3-year service coverage aimed at allowing to focus only on diagnostic activity.

*\*on selected products only*



On-call Support



Remote Service



Faraday Cage Shielding Performance Checks



Electrical Safety Checks



Periodic Quality Checks



@volution

### UPGRADE PROGRAM

- EVOlution represents Esaote's continuous improvement program which ensures Upgrade Solutions to include the latest features and reach top performance.



160000001MAK Ver. 11



Esaote S.p.A. - sole-shareholder company  
Via Enrico Melen 77, 16152 Genova, ITALY, Tel. +39 010 6547 1, Fax +39 010 6547 275, [info@esaote.com](mailto:info@esaote.com)

MyLab™ is a trademark of Esaote S.p.A.  
Technology and features are system/configuration dependent. Specifications subject to change without notice. Information might refer to products or modalities not yet approved in all countries.  
Product images are for illustrative purposes only. For further details, please contact your Esaote sales representative.  
\* Conditions for additional service coverage may vary depending on your country. Please, contact your Esaote reference to get the conditions valid for your country.

Please visit us online  
for more information

