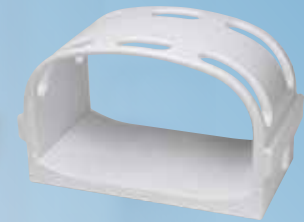




evo¹⁶lution

Dedicated MRI Coil Options

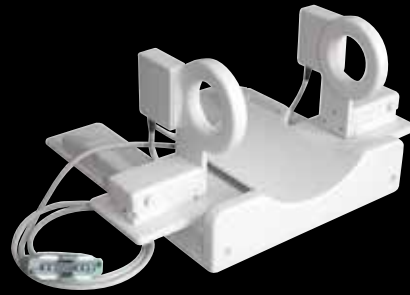


Spine Coils



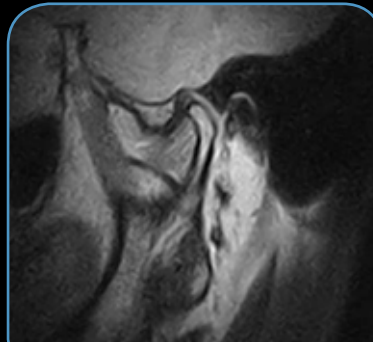
XL Shoulder

esaote

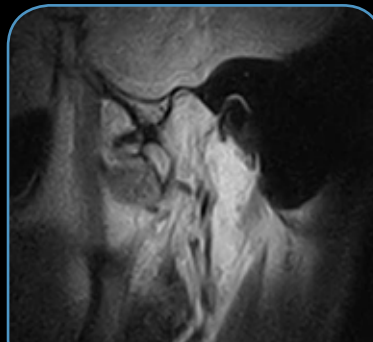


Bilateral TMJ Coil

This coil allows simultaneous scanning of both joints, reducing the exam time and the risk of patient movements. It also includes an adjustable device to guarantee comfortable positioning according to the patient's head size. It can be used for both supine and weight-bearing examination, thanks to a specific coil adaptor.



FSE PD Sagittal - Closed mouth



FSE PD Sagittal - Open mouth

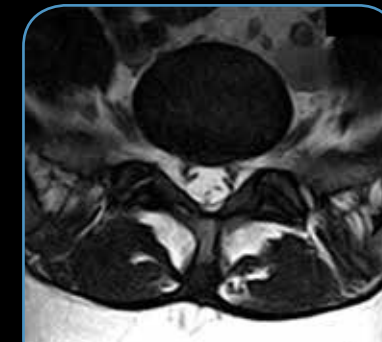


XL Flex L-Spine Coil

This coil has been designed with the aim of better accommodating large patients in L-spine examinations. Using two different lengths of flexible belt enables patients with a large pelvic circumference to be covered without sacrificing comfort.



FSE T2 Sagittal



3D Hyce Transverse

Esaote MRI Coil Options for Standard and Large Patients

Our latest set of multi-channel coils are characterized by high performance in terms of image quality and ergonomics, which improves patient comfort and diagnostic confidence.

New multi-channel technology uses a new, low-impedance pre-amplifier that delivers more efficient channel de-coupling to maximize the signal detected by each channel.

More coils,
more channels,
more ways
to achieve excellence
in spine imaging

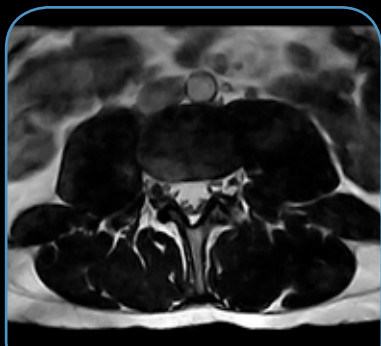


4-Channel L-Spine Coils

The EVO'16 package includes a medium and a large L-Spine coil, both of which are designed to enhance the image quality of spine and hip exams. Each coil features four phased array channels to improve signal-to-noise ratio and signal uniformity, helping to increase anatomical detail and contrast resolution.



FSE T2 Sagittal



3D Hyce Transverse

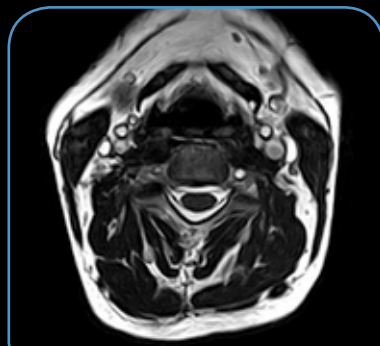


DPA C-Spine Coil

The C-Spine coil features Dual Phased Array (DPA) technology that improves overall performance, especially in terms of signal uniformity in the whole region of interest. Moreover, its larger dimensions guarantee improved patient comfort during the examination.



FSE T2 Sagittal

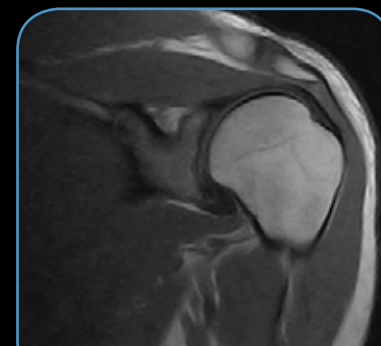


3D Hyce Transverse

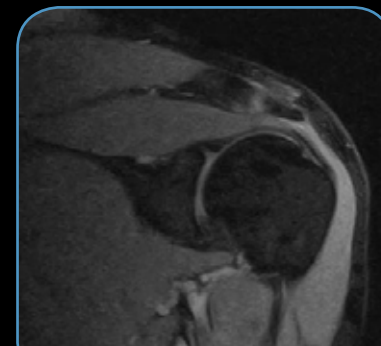


3-Channel Shoulder coil* **NEW**

The 3-Channel Shoulder coil improves the overall performance in shoulder examination for large patients, making it more comfortable for patient and easier to perform for the operator. The multi-channel coil improves signal homogeneity in the area of interest for a better depiction of the shoulder joint, particularly in large patients.



SE T1 Coronal



XBone T2* Coronal



evo¹⁶lution

is dedicated to



G.scan brio



S.scan



O.scan



ESAOTE S.p.A.- sole-shareholder company
Via Enrico Melen, 77 16152 Genova, ITALY, Tel. +39 010 6547 1, Fax +39 010 6547 275, info@esaote.com

Technology and features are system/configuration dependent. Specifications subject to change without notice.
Information might refer to products or modalities not yet approved in all countries. Product images are for illustrative purposes only.
For further details, please contact your Esaote sales representative.



Please visit us online
for more information

www.esaote.com