



evo¹⁶lution

Dedicated MRI

esaote

Provides the latest and greatest software and hardware upgrade configuration powered by eXP technology: boosting productivity, increasing image quality, and adding new acquisition techniques.

EVolution represents Esaote's continuous improvement program which ensures **product and service enhancement** as well as increased customer satisfaction.

- Continuous improvement of performance, features, and services
- State-of-the-art technologies upgrading possibilities
- Maximized return on investment
- Augmented patient care
- Improved clinical workflow and patient throughput



Dynamic Contrast Enhanced MRI (DCE-MRI)

Contrast media uptake is an important indication of disease activity for several MSK pathologies.

EVolution'16 introduces a new method based on the use of color maps for performing the contrast media uptake analysis. This new approach is intuitive and operator-independent in the calculation and visualization of uptake curves.

Software and Hardware Upgrade

Discover the new features which are part of the EVOLution'16 upgrade for MRI. All features are built on a new advanced hardware platform based on Graphic Processing Unit (GPU) technology, boosting MRI performance.



evo 3D

Represents the next step in terms of isotropic 3D sequences.

Reduces the voxel size enabling incredibly high resolution Multi-Planar-Reconstruction (MPR).

In combination with Speed-Up Pro, allows for a 50% reduction in scan time in a single acquisition.



MAR

MAR sequences facilitate imaging both of patients with metallic implants and postoperative MRI scans.

Uses a sophisticated gradient management technique to reduce in-plane distortions due to metal implants.



e-Spine

Optimized spine protocols and examination management allows for outstanding image quality, improved patient care, and a greater range of applications.

Patient comfort and operator usability benefit as well.



Speed-Up PRO

Sophisticated acquisition and reconstruction method developed for the new generation of Esaote Dedicated MRI systems. Superior quality images can now be produced from substantially reduced scan times.

Gives you the flexibility to combine quality and productivity in the same sequence.





G-scan Brio: The Key to Confidence


The G-scan Brio is a revolutionary MRI approach for all musculoskeletal applications, which, combined with the new EVO'16 upgrade, increases diagnostic accuracy and confidence.

The open and tilting design is the new and innovative way of performing an MRI in which the position of the patient becomes an integral part of the exam outcome.



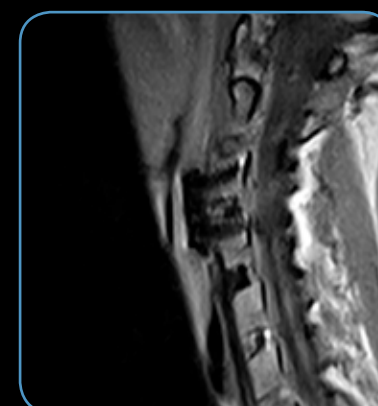
 Supine L-Spine
3D Hyce ISO Coronal

 Supine L-Spine
MPR Sagittal

 Supine L-Spine
MPR Transverse





T-Spine FSE T2 Sagittal




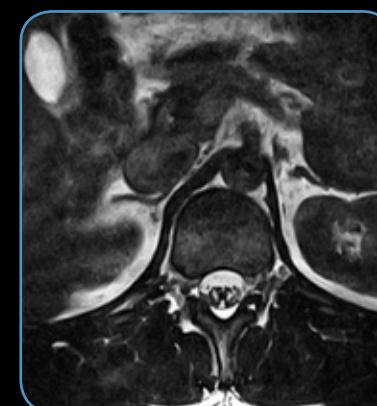
C-Spine MAR FSE T1 Sagittal



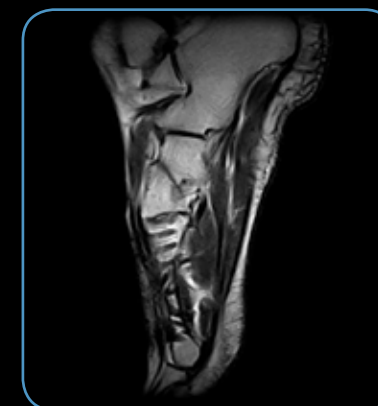
 Weight-Bearing L-Spine
3D Hyce ISO Coronal

 Weight-Bearing L-Spine
MPR Sagittal

 Weight-Bearing L-Spine
MPR Transverse



T-Spine 3D Hyce Iso Axial



Foot MAR FSE T2 Sagittal



S-scan: The Next Step in MRI

The S-scan dedicated MRI scanner represents the latest development of Esaote's technology in MRI. It is perfectly in line with today's need for efficient and economic health care, and is a sensible choice for any imaging center with a substantial musculoskeletal workload. S-scan, combined with EVO'16, allows users to increase productivity and optimize workflow, whilst retaining excellent image quality.



L-Spine -3D Hyce ISO Coronal

L-Spine MPR Hyce Axial



Knee 3D Sharc ISO Sagittal

Knee MPR Sharc Coronal



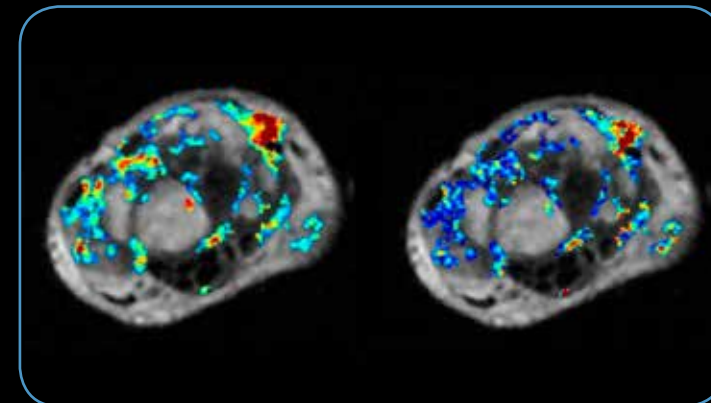
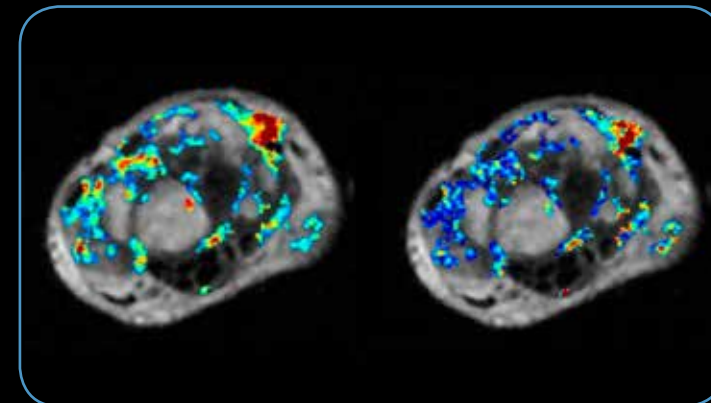
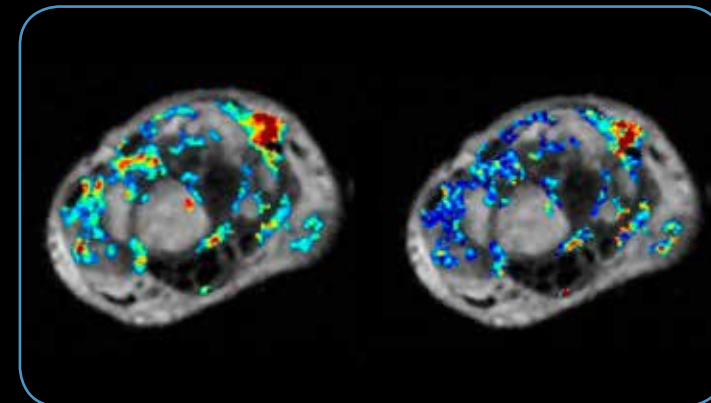
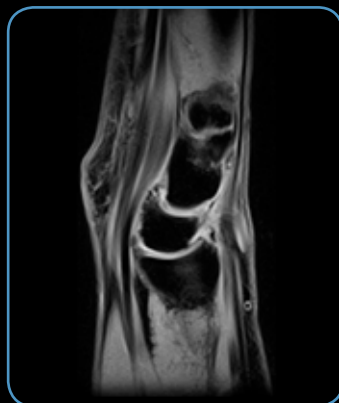
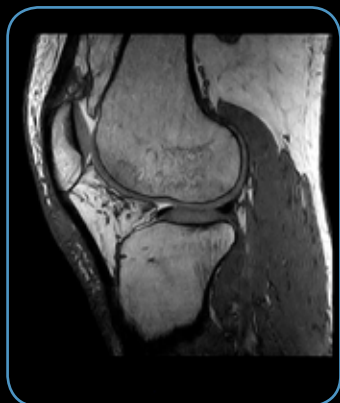
Knee MAR FSE PD Coronal



O-scan: Taking Pride in Performance

O-scan, the 'star performer' in terms of MRI for extremities, meets the need for higher throughput in radiological settings and orthopedic practices. An O-scan works well as an accompaniment to whole body scanners, helping to free up the latter for major clinical cases. O-scan also significantly improves the patient experience.

The EVO'16 upgrade can be relied upon to enhance the performance of the O-scan in terms of spatial resolution and scanning time.



Knee Sagittal 3D Sharc

Wrist XBone T2

Ankle MAR FSE T2 Coronal

Wrist MAR FSE T2 Coronal

Pre Treatment

Post Treatment



Esaote S.p.A.
Via di Caciolle, 15 50127 Florence, Italy, Tel. +39 055 4229 1, Fax +39 055 4229 208, international.sales@esaote.com
Via A. Siffredi, 58 16153 Genoa, Italy, Tel. +39 010 6547 1, Fax +39 010 6547 275, info@esaote.com
Via E. Melen, 77 16152 Genoa, Italy, Tel. +39 010 6547 1, Fax +39 010 6547 275, esaote@pec.esaote.com

FRANCE
Esaote Medical SAS
ZA du Bel Air 10, rue de Témar
78105 Saint-Germain-en-Laye
Tel. +33 1 8204 8900, Fax +33 1 3061 7210
info@esaote.fr

BRAZIL
Esaote Healthcare do Brasil
Rua Geraldo Flausino Gomes, 78
CEP: 04575-060 São Paulo - SP
Tel. +55 11 2789-0400 Fax +55 11 2789-0432
comercial@esaote.com.br

GERMANY
Esaote Biomedica Deutschland GmbH
Max-Planck-Straße 27a
50858 Köln
Tel. +49 2234 688 5600, Fax +49 2234 967 9628
info@esaote.de

ARGENTINA
Esaote Latinoamérica S.A.
San Martín 551, Cuerpo 'C', Piso 8, (C1004AAK) Buenos Aires
Tel. +54 11 4326 1832, Fax: +54 11 4328 1245
info@esaote.com.ar

SPAIN
Esaote España S.A.
C/. Pont Reixat, 5
08960 Sant Just Desvern, Barcelona
Tel. +34 93 473 2090, Fax +34 93 473 2042
info@esaote.es

INDIA
Esaote Asia Pacific Diagnostic Private Limited
DLF IT Park, A - 44 & 45, Tower- C, Ground Floor,
Sector- 62, Noida, Uttar Pradesh, India
Pin Code: 201 301
Tel. +91 120 4732444, Fax +91 120 4750148
info@esaote.in



THE NETHERLANDS AND BELGIUM
Esaote Benelux B.V.
Philipsweg 1
6227 AJ Maastricht
Tel. +31 43 3824650, Fax +31 43 3824651
benelux@esaote.nl

HONG KONG AND FAR EAST
Esaote China Ltd
18/F, 135 Bonham Strand Trade Centre,
135 Bonham Strand, Sheung Wan, Hong Kong
Tel. +852 2545 8386, Fax +852 2543 3068
esaote@esaotechina.com



UK
Esaote UK
14, Cambridge Science Park
Milton Road, Cambridge, CB4 0FQ
Tel. + 44 1223 424499, Fax + 44 709 288 0231
infoUK@esaote.com

CHINA
Esaote Shenzhen Medical Equipment
Room 2608, Tower B
Beijing Global Trade Center
36 North Third Ring Road East,
Dongcheng District, 100013, Beijing
Tel. +86 010 58257766, Fax +86 010 52257760



Please visit us online
for more information

www.esaote.com

NORTH AMERICA
Esaote North America
8000 Castleway Drive,
Indianapolis, IN 46250
Tel. +1 317 813 6000, Fax +1 317 813 6600
inquire@esaoteusa.com

RUSSIAN FEDERATION AND CIS
Esaote S.p.A.
18 Leningradsky prospekt
Off. 5 and 6, Moscow 125040
Tel. +7 495 232 0205, Fax +7 495 232 1833
esaotemoscow@yandex.ru