



NEVER STOP ELEVATING

YOUR VET EXPERIENCE.

 **esaote**

MYLAB<sup>™</sup>VET PRODUCT LINE



# *MyLab™ VET* **OUTSTANDING PRODUCT LINE**

## **A GLOBAL LEADER**

Esaote is a recognized global leader in ultrasound veterinary imaging, focused on providing smart solutions for your everyday practice.

## **30 YEARS EXPERIENCE**

Thanks to 30 years experience, a wide range of products has been designed specifically for your needs, from cart-based complete systems to compact portable products.

## **DEDICATION AND VISION**

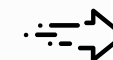
Our mission is to follow you all the way, supporting your daily workflow and elevating your vet experience through new advanced approaches and technologies.



*Dedicated vet software  
and probes*



*Windows® 10*



*Fast start-up*



*Zero-click technology*



*Full-screen visualization*



*High response  
capacitive touchscreen*

MyLab™9<sub>VET</sub>



MyLab™X8<sub>VET</sub>



**CART-BASED**

MyLab™X7<sub>VET</sub>



MyLab™X5<sub>VET</sub>



**PORTABLES**

MyLab™Omega<sub>VET</sub>



MyLab™Sigma<sub>VET</sub>



NEVER STOP ELEVATING YOUR VET EXPERIENCE.

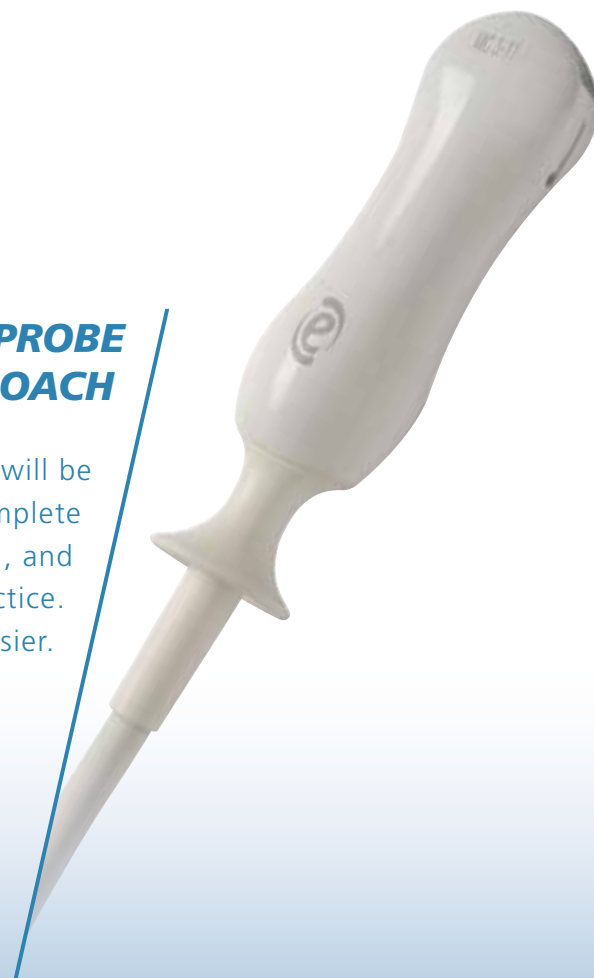




# *Ultrasound* **HAS NEVER BEEN EASIER**

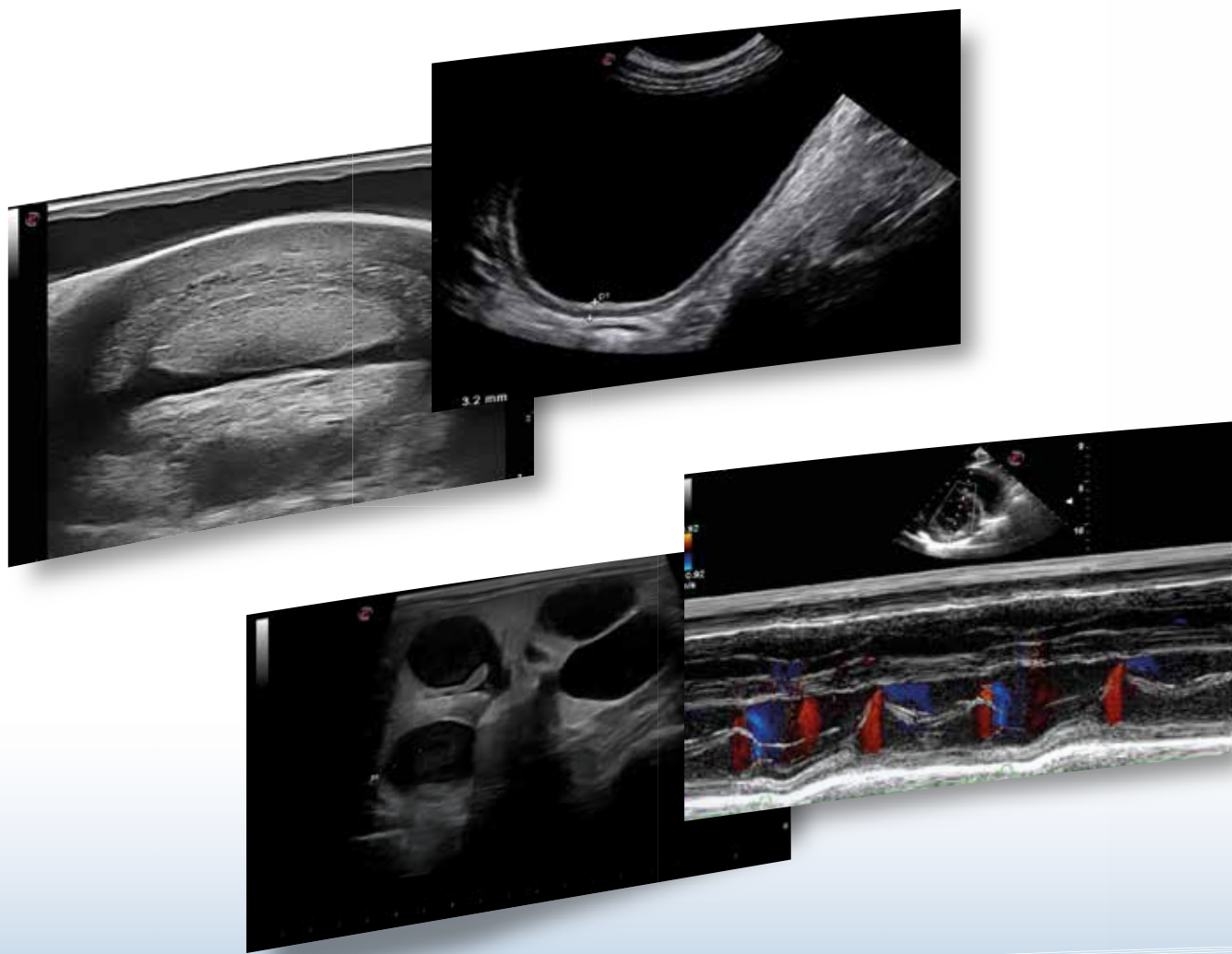
## **SINGLE PROBE APPROACH**

With just one probe it will be possible to make a complete imaging medical examination, and simplify your everyday practice. Ultrasound has never been easier.





**FROM CARDIAC AND ABDOMINAL  
TO ORTHOPEDIC APPLICATIONS**



NEVER STOP ELEVATING YOUR VET EXPERIENCE. **esaote**

# Complete **CARDIOLOGY PACKAGE**

**MAKE FAST AND ACCURATE DIAGNOSES  
ADDING VALUE TO YOUR EXAMINATIONS:**

- **CMM** - M-Mode quality & cardiac examination efficiency
- **TVM** - wall motion analysis for myocardial function
- **Zero-click EF** - automatic ejection fraction computation
- **XStrain™** - endocardial velocity quantification & heart deformation detection
- **Smart stress-echo** - complete ejection fraction reporting for cardiac segment evaluation



Smart stress-echo  
package

XStrain™

Zero-click EF

CMM & TVM

M-Mode

***Fast and accurate diagnosis***

NEVER STOP ELEVATING YOUR VET EXPERIENCE.

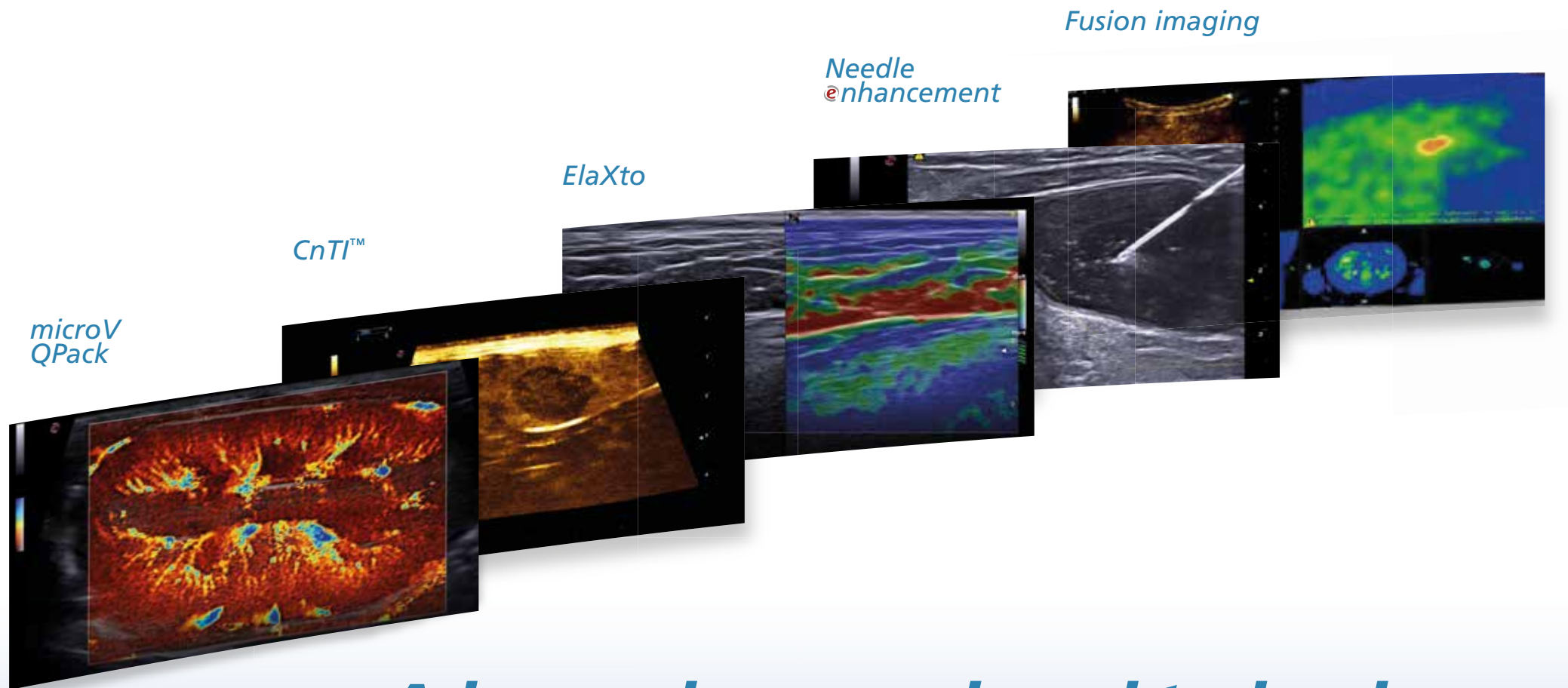
**e**saote

# *Clinical confidence* **REQUIRES HIGH PERFORMANCE & ADVANCED TOOLS**

- **22 MHz probe** with very high-res images
- **microV** - fast non-invasive hemodynamic evaluation with high sensitivity for lesion characterization
- **Needle @enhancement** - valuable aid in interventional practice
- **ElaXto** - non-invasive assessment of tissue elasticity
- **Fusion imaging** - CT, MRI side-by-side with real-time ultrasound
- **CnTI™** - advanced technology for Contrast Enhanced Ultrasound (CEUS) imaging
- **QPack** - multimodality quantification tool for CnTI™, Color & Power Doppler







## ***Advanced approach and technology***


NEVER STOP ELEVATING YOUR VET EXPERIENCE.

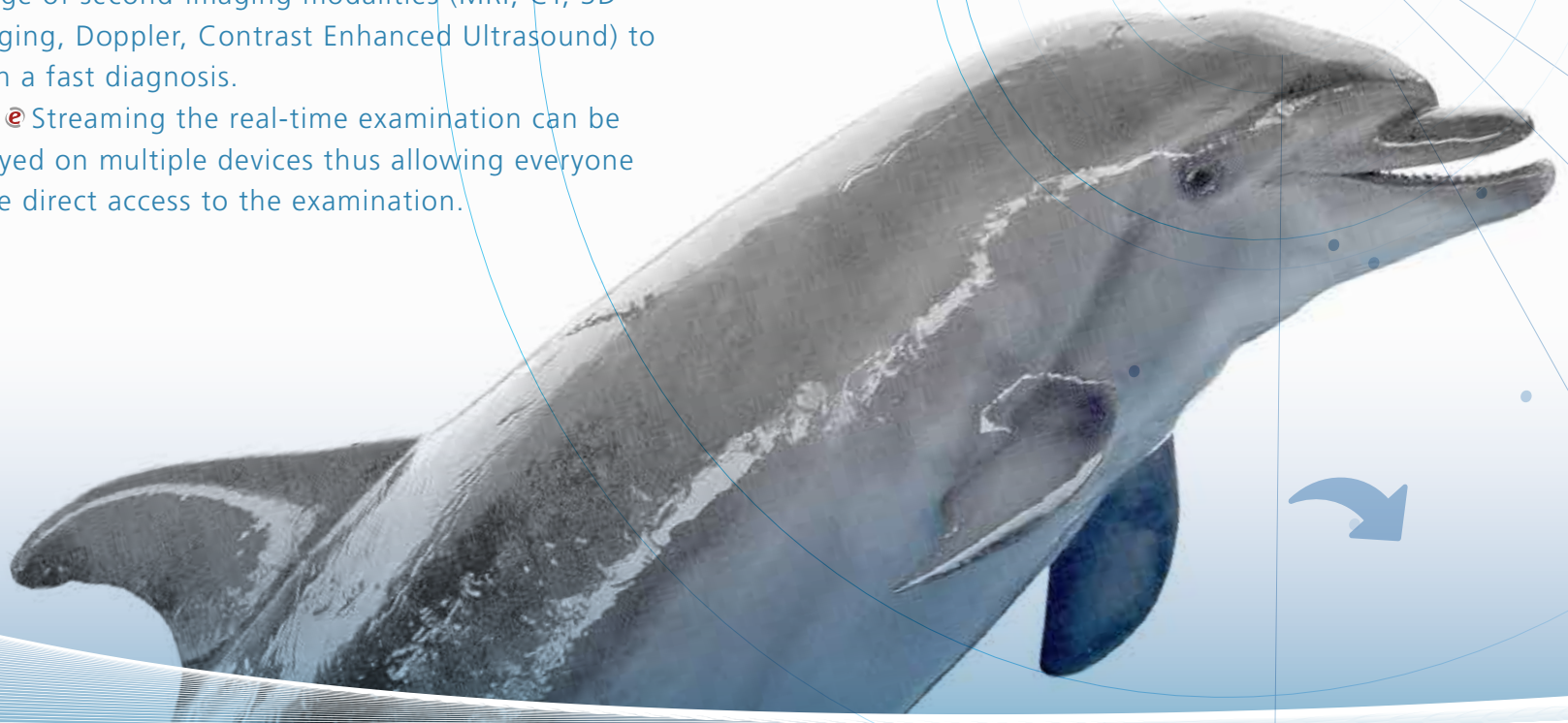


# *Broad* **CONNECTIVITY OPTIONS**

The worldwide medical imaging community has entered a new era of communication opportunities.

Today with the multi-modality tool it is possible to combine real-time ultrasound imaging with a wide range of second-imaging modalities (MRI, CT, 3D imaging, Doppler, Contrast Enhanced Ultrasound) to reach a fast diagnosis.

With  Streaming the real-time examination can be displayed on multiple devices thus allowing everyone to have direct access to the examination.





- **DICOM** connectivity (including Q/R)
- **Multi-modality** archive
- **Wireless** connectivity
- **MyLab™ Desk evo** viewer
- **MyLab™ Tablet**

NEVER STOP ELEVATING YOUR VET EXPERIENCE.





MYLAB™ VET PRODUCT LINE  
INNOVATIVE CLINICAL SOLUTIONS



Esaote S.p.A. - sole-shareholder company  
Via Enrico Melen 77, 16152 Genova, ITALY, Tel. +39 010 6547 1, Fax +39 010 6547 275, [info@esaote.com](mailto:info@esaote.com)

Windows® is a registered trademark of Microsoft Corporation. MyLab is a trademark of Esaote spa.  
Technology and features are system/configuration dependent. Specifications subject to change without notice. Information might refer to products or modalities not yet approved in all countries.  
Product images are for illustrative purposes only. For further details, please contact your Esaote sales representative.

Please visit us online  
for more information

