



NEVER STOP ELEVATING

YOUR VET EXPERIENCE.



MYLAB[™]VET PRODUCT LINE



MyLab™ VET **OUTSTANDING PRODUCT LINE**

A GLOBAL LEADER

Esaote is a recognized global leader in ultrasound veterinary imaging, focused on providing smart solutions for your everyday practice.

30 YEARS EXPERIENCE

Thanks to 30 years experience, a wide range of products has been designed specifically for your needs, from cart-based complete systems to compact portable products.

DEDICATION AND VISION

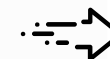
Our mission is to follow you all the way, supporting your daily workflow and elevating your vet experience through new advanced approaches and technologies.



*Dedicated vet software
and probes*



Windows® 10



Fast start-up



Zero-click technology



Full-screen visualization



*High response
capacitive touchscreen*

MyLab™9^{VET}



CART-BASED

MyLab™X7^{VET}



MyLab™X5^{VET}



PORTABLES



MyLab™Omega^{VET}



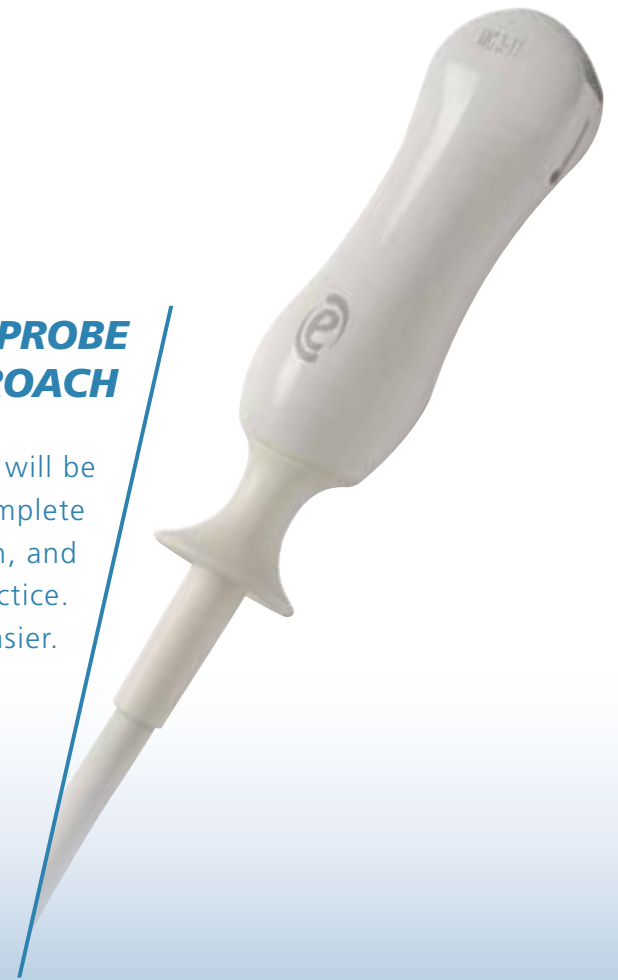
MyLab™Sigma^{VET}



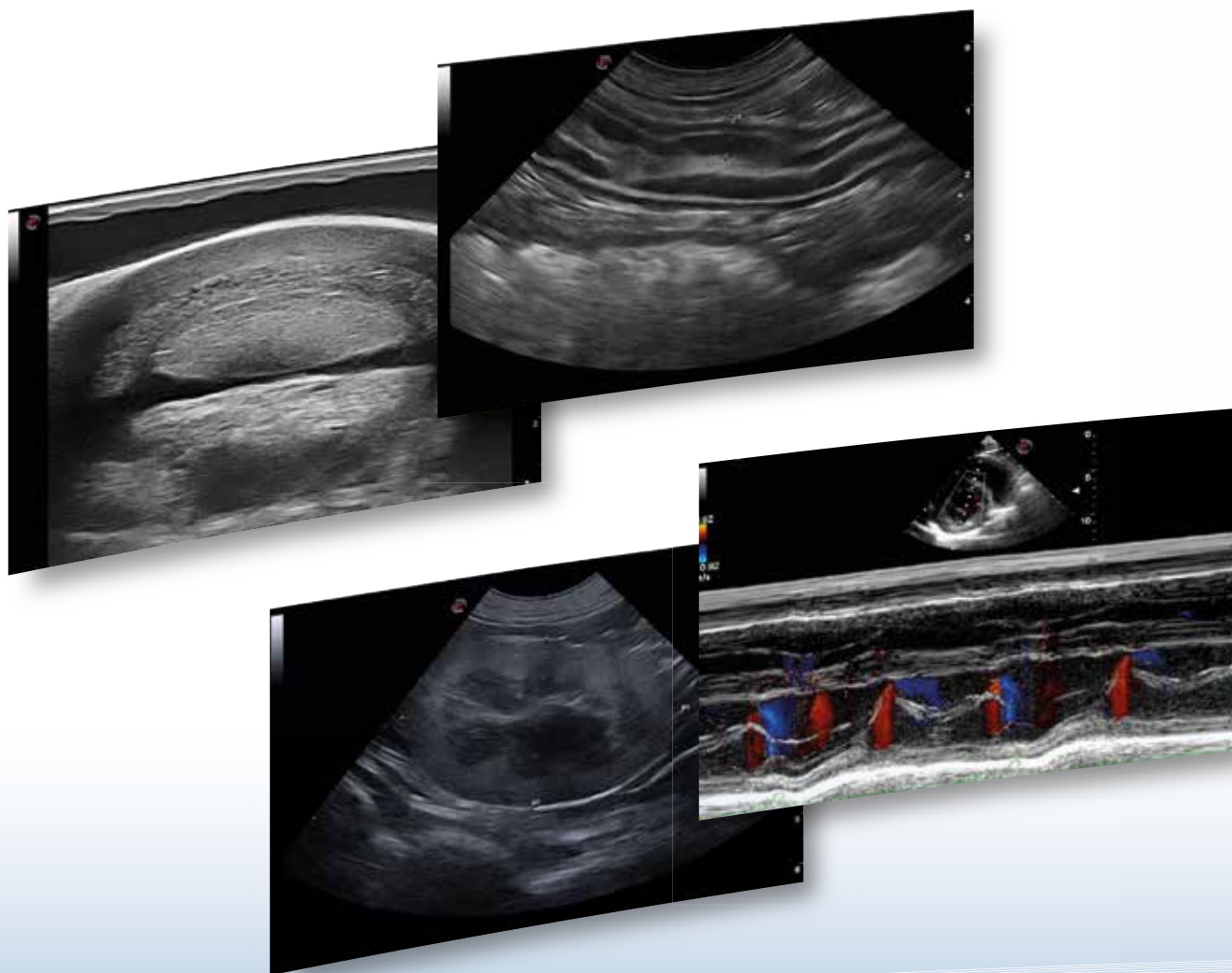
Ultrasound **HAS NEVER BEEN EASIER**

SINGLE PROBE APPROACH

With just one probe it will be possible to make a complete imaging medical examination, and simplify your everyday practice. Ultrasound has never been easier.



**FROM CARDIAC AND ABDOMINAL
TO ORTHOPEDIC APPLICATIONS**



NEVER STOP ELEVATING YOUR VET EXPERIENCE



Complete **CARDIOVASCULAR PACKAGE**

**MAKE FAST AND ACCURATE DIAGNOSES
ADDING VALUE TO YOUR EXAMINATIONS:**

- **CMM** - M-Mode quality & cardiac examination efficiency
- **TVM** - wall motion analysis for myocardial function
- **Zero-click EF** - automatic ejection fraction computation
- **XStrain™** - endocardial velocity quantification & heart deformation detection
- **Smart stress-echo** - complete ejection fraction reporting for cardiac segment evaluation



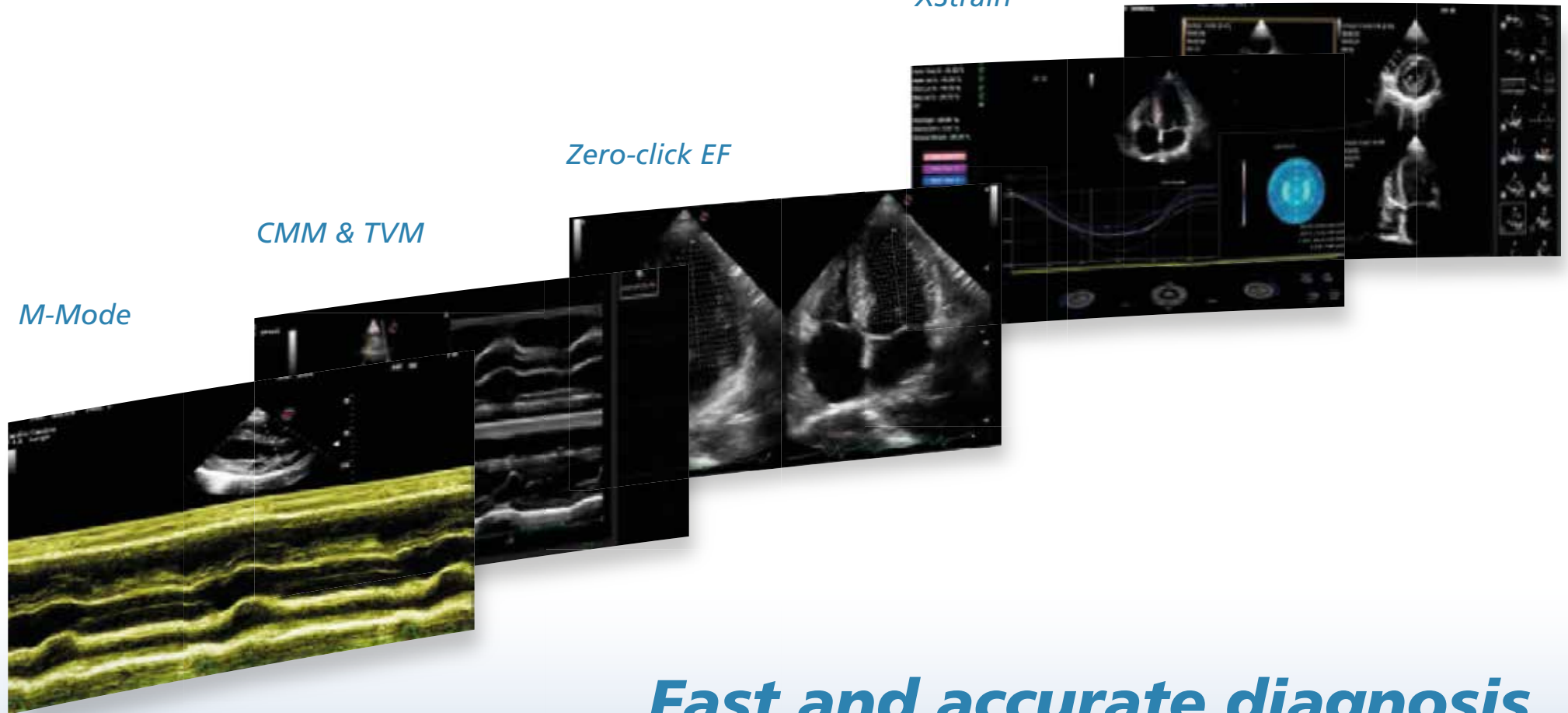
*Smart stress-echo
package*

XStrain™

Zero-click EF

CMM & TVM

M-Mode



Fast and accurate diagnosis

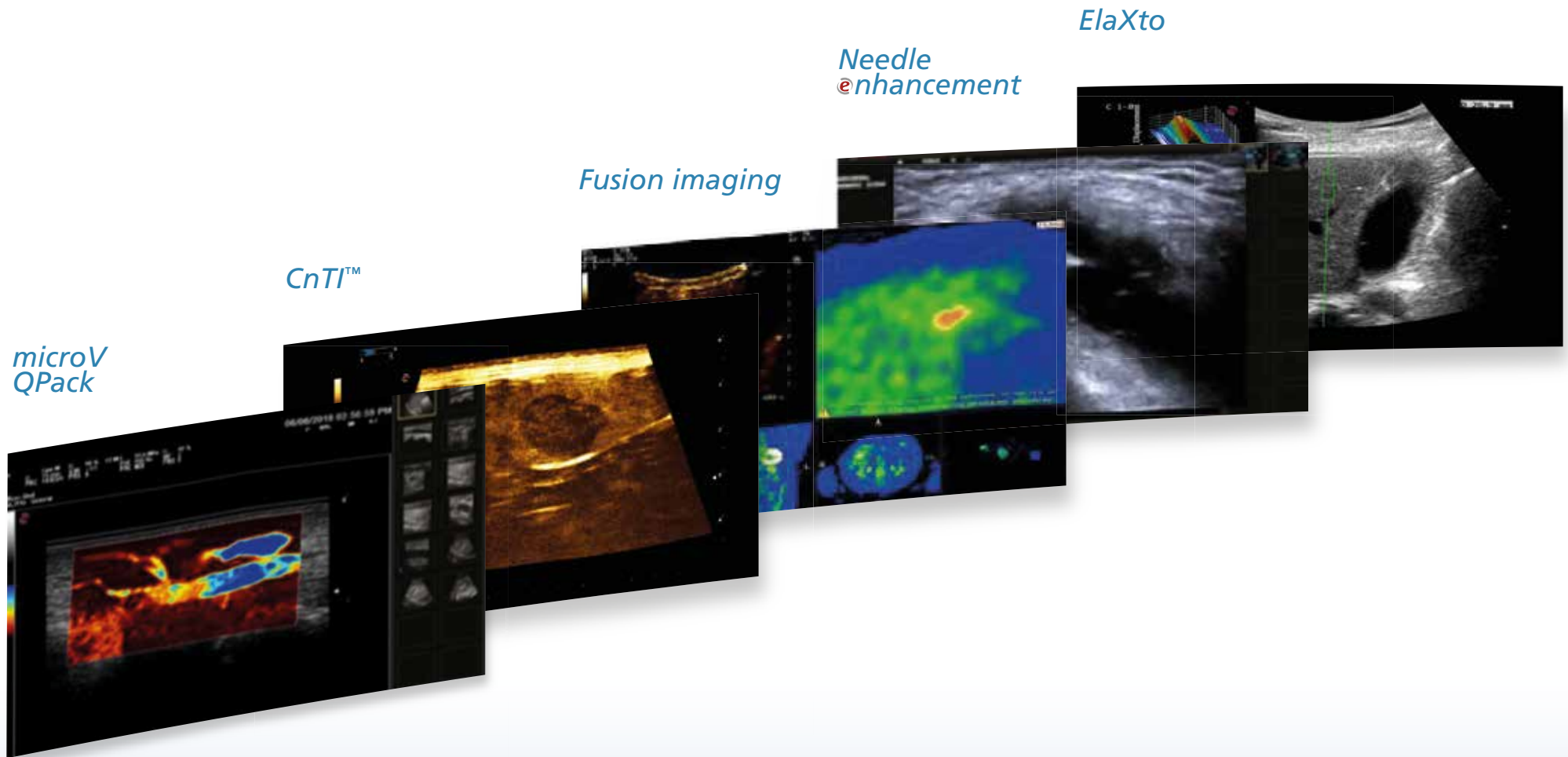
NEVER STOP ELEVATING YOUR VET EXPERIENCE



Clinical confidence **REQUIRES HIGH PERFORMANCE & ADVANCED TOOLS**

- **22 MHz probe** with very high-res images
- **microV** - fast non-invasive hemodynamic evaluation with high sensitivity for lesion characterization
- **Needle @enhancement** - valuable aid in interventional practice
- **ElaXto** - non-invasive assessment of tissue elasticity
- **Fusion imaging** - CT, MRI side-by-side with real-time ultrasound
- **CnTI™** - advanced technology for Contrast Enhanced Ultrasound (CEUS) imaging
- **QPack** - multimodality quantification tool for CnTI™, Color & Power Doppler





Advanced approach and technology

NEVER STOP ELEVATING YOUR VET EXPERIENCE

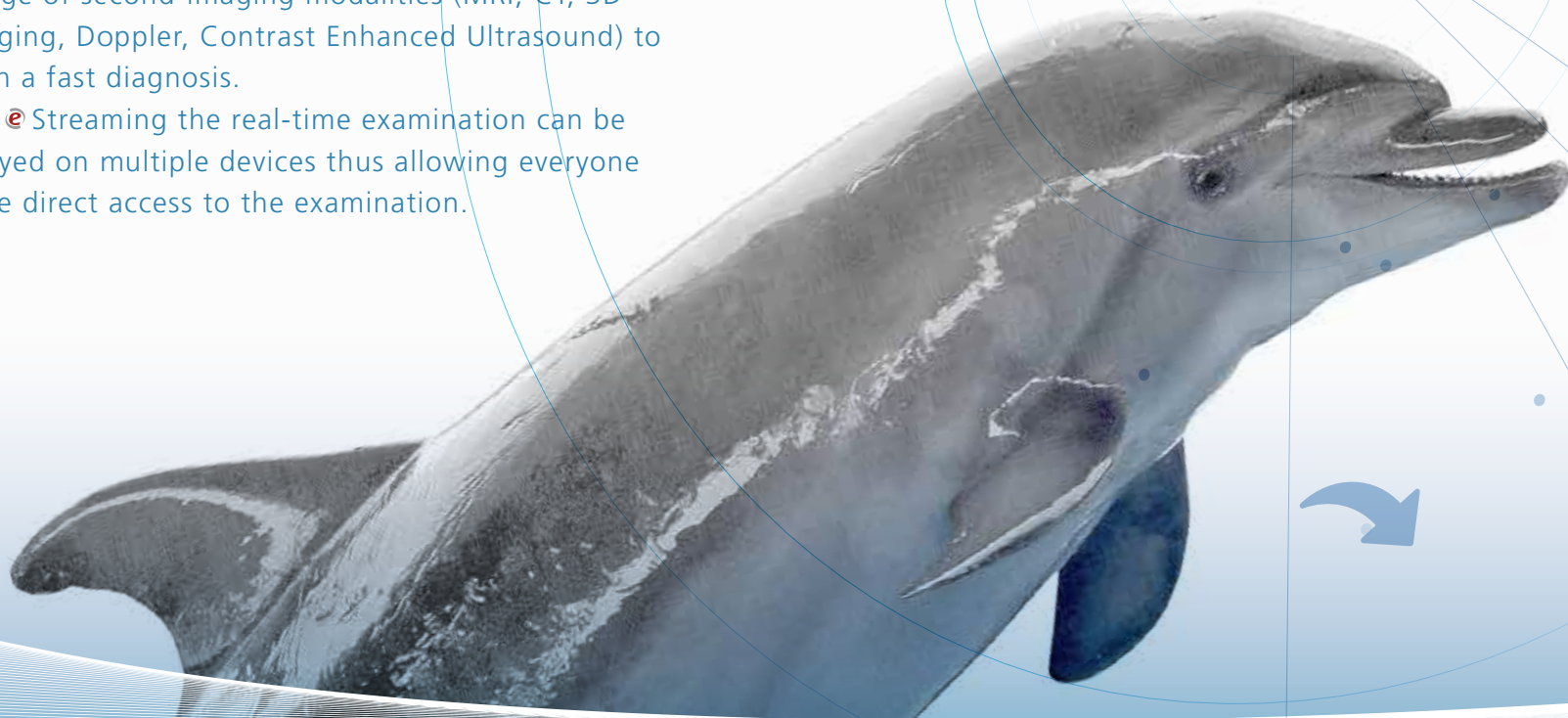


Broad **CONNECTIVITY OPTIONS**

The worldwide medical imaging community has entered a new era of communication opportunities.

Today with the multi-modality tool it is possible to combine real-time ultrasound imaging with a wide range of second-imaging modalities (MRI, CT, 3D imaging, Doppler, Contrast Enhanced Ultrasound) to reach a fast diagnosis.

With eStreaming the real-time examination can be displayed on multiple devices thus allowing everyone to have direct access to the examination.





- **DICOM** connectivity (including Q/R)
- **Multi-modality** archive
- **Wireless** connectivity
- **MyLab™ Desk evo** viewer
- **MyLab™ Tablet**

NEVER STOP ELEVATING YOUR VET EXPERIENCE





MYLAB™ VET PRODUCT LINE
INNOVATIVE CLINICAL SOLUTIONS



Esaote S.p.A. - sole-shareholder company
Via Enrico Melen 77, 16152 Genova, ITALY, Tel. +39 010 6547 1, Fax +39 010 6547 275, info@esaote.com

Windows® is a registered trademark of Microsoft Corporation. MyLab is a trademark of Esaote spa.
Technology and features are system/configuration dependent. Specifications subject to change without notice. Information might refer to products or modalities not yet approved in all countries.
Product images are for illustrative purposes only. For further details, please contact your Esaote sales representative.

Please visit us online
for more information

