

A silhouette of a person's head and neck in profile, facing right. The interior of the silhouette is filled with a vibrant, starry galaxy pattern in shades of blue and white. The background is white with a series of thin, curved, light blue lines sweeping across the lower half of the image.

NEVER STOP
SEEING THE UNSEEN.

ULTRASOUND /

MAGNETIC RESONANCE /

HEALTHCARE IT /

SERVICE SOLUTIONS /



**WE HAVE
A UNIVERSE
TO EXPLORE.**

N E V E R S T O P S E E I N G T H E U N S E E N .

Human beings are ambitious creatures, who made research their purpose. In ancient times, they used to observe the universe and its silent movements, wondering about their destiny. Then, that universe became a destination to explore. And Esaote reached it as well, transforming this tireless research into a corporate philosophy: to see what others didn't see and to be pioneers of discovery. Without stopping.

But there is a universe much closer to us, equally multi-faceted and with many things to dig into: the human body. Just like space, some body parts are not visible to the naked eye: that's why we need Esaote's advanced technology to be able to explore them and unlock their secrets. This technology is constantly improved to support medical science, contributing to a better future for everyone and finally making what is essential visible to the eye.

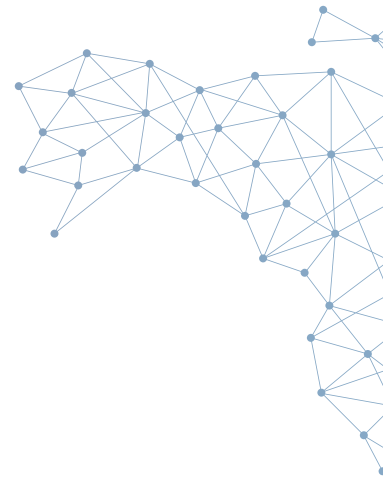
*Esaote is One
of the World's
Leading Providers*
of **Diagnostic
Imaging
Solutions**

The Esaote Group is a leader in the biomedical equipment sector, in particular in the areas of ultrasound, dedicated MRI, and software for managing the diagnostic process.

Headquartered in Genoa, Italy, the Group has its production and research units in Italy (Genoa and Florence) as well as in the Netherlands (Maastricht and Sittard) and it is active in around 100 countries worldwide.

The Esaote Group employs over 1,250 people, 20% of whom are engaged in Research and Development, a sector in which the company invested approximately 12% of its total turnover in 2022. Esaote, which proudly collaborates with clinical and scientific research centers and universities around the world, has received numerous accolades for its performance in terms of innovation, its investments in research, human capital and technology, as well as for extraordinary product design.

Information on Esaote and its products is available at **www.esaote.com**





ULTRASOUND



MAGNETIC RESONANCE



HEALTHCARE IT



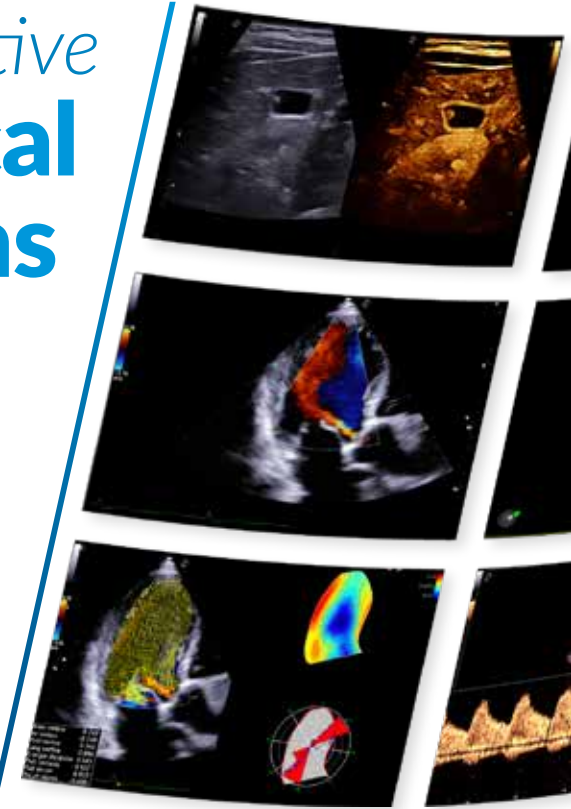
SERVICE SOLUTIONS





Innovative **Clinical Solutions**

CnTI™ on Liver
CV CFM
HyperDoppler



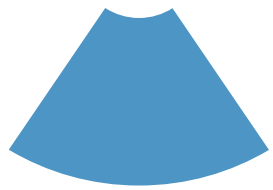
microV on Thyroid
Ob 3D Baby Face
PW Neurosonology

QAI Attenuation Imaging
QElaXto 2D
UroFusion

Q-Spine Analysis
Speed Up Technique -
46% faster
Metal Implant Imaging

Enterprise IT Systems
Workflow and digital image
management in Radiology,
Cardiology, and Diagnostic Imaging
Cardiovascular Analysis





Ultrasound

Outstanding Product Line

Our brand new ultrasound line has been entirely redesigned and now offers a wide range of systems from the agile portables to the more advanced premium platforms, all with the purpose of improving patient care.

MyLab™Desk

Review your exams offline with MyLab™Desk, to complete your analysis.

MyLab™Share

Enables unique live sharing for educational purposes, with a local or global audience.



**AUGMENTED
INSIGHT™**

• MyLab™X90

- Cutting-edge integrated technologies
- Ergonomics and comfort
- Extended connectivity



PERFORMANCE

- MyLab™X8 eXP
- MyLab™X8



VERSATILITY

- MyLab™X7
- MyLab™X6
- MyLab™X5



PRODUCTIVITY

- MyLab™X75



POWER

- MyLab™X9
- MyLab™9 eXP
- MyLab™9



MOBILITY

- MyLab™Omega
- MyLab™Sigma
- MyLab™X1





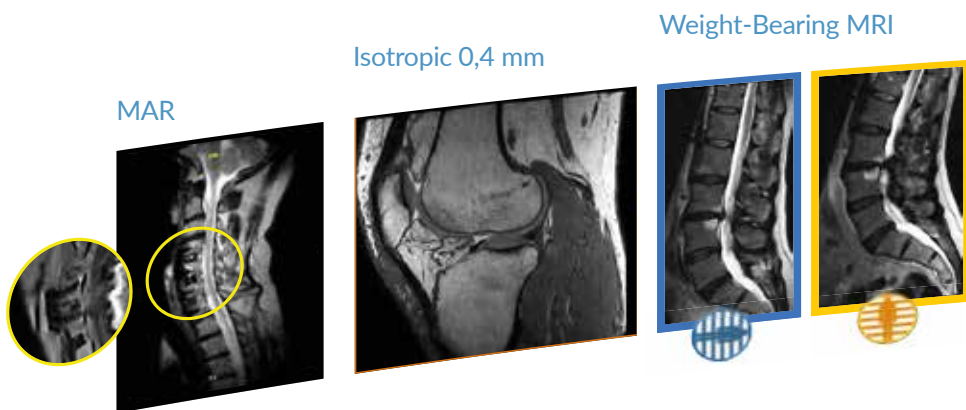
Magnetic Resonance

Changing the MRI Perspective

A large MRI product portfolio including Dedicated and Whole Body systems based on permanent magnet technology and characterized by great image quality, low operating costs and optimal ergonomics for patient comfort.

**DEDICATED TO
EFFICIENCY**

- O-scan



- **High image quality**
- **Simplified workflow**
- **Innovative Weight-Bearing MRI**

**DEDICATED TO
COMFORT**

- S-scan



**DEDICATED TO
ADVANCED
DIAGNOSTICS**

- G-scan Brio

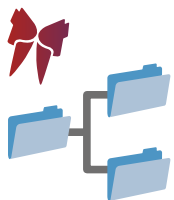


**MAGNIFY
YOUR
POSSIBILITIES**

- Magnifico Open

- Wide range of clinical applications
- Superb image quality
- Advanced features





Healthcare IT

Make your workflow smarter

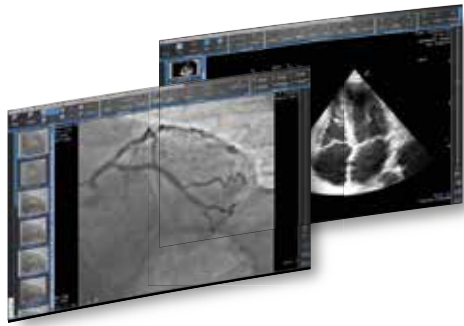
Our Healthcare IT solutions are designed to improve sensitivity in diagnosis. AI is used to help professionals increase their confidence, by facilitating decision-making and favouring dialogue.



SUITESTENSA ENTERPRISE IMAGING

- VNA
- Enterprise PACS and CPACS
- Cloud Solutions
- Mobile & Web Access
- Patient Portal
- RIS
- Review
- Breast Imaging and Screening
- Interventional Radiology
- Radiotherapy EPR
- Sharing & Collaboration
- Endoscopic workflow
- Nuclear medicine

SUITESTENSA CARDIOVASCULAR



- CVIS
- Review Cardio
- Cath Lab
- Arrhythmology
- Echo
- ECG
- Cardiac Surgery
- Endovascular Surgery
- Check Up & Patient Hospitalization
- Telemedicine
- Advanced post processing tools



ARTIFICIAL INTELLIGENCE

- Marketplace AI
- Scientific Archive
- Teaching files
- AI modelling

HEALTHCARE ANALYTICS

- Business intelligence
- Data export
- Export management





From installation to maintenance

We have the Right Service for You

Our mission is to protect and maximize the performance of your system while increasing the profitability of your investment.



*Pre-Installation
Site Surveys
and Site Planning*



Installations



*Maintenance
Agreements*



*Training and
Applications
Support*

@Care

**DISCOVER OUR @Care
PROTECTION PLAN**

- Your Service coverage beyond standard warranty
- The perfect solution for ensuring operational effectiveness and extending the lifespan of your system



S@RENITY PROGRAM*

- The 3-year service coverage aimed at allowing to focus only on diagnostic activity.

**on selected products only*



evo**lution**

UPGRADE PROGRAM

- EVOLution represents Esaote's continuous improvement program which ensures Upgrade Solutions to include the latest features and reach top performance



Periodic
Quality Checks



Electrical
Safety Checks



Faraday Cage
Shielding Performance
Checks



Remote
Service



On-call
Support



N E V E R S T O P
S E E I N G T H E U N S E E N .

P R O D U C T P R O F I L E
I N N O V A T I V E C L I N I C A L S O L U T I O N S



Esaote S.p.A. - sole-shareholder company
Via Enrico Meloni 77, 16152 Genova, ITALY, Tel. +39 010 6547 1, Fax +39 010 6547 275, info@esaote.com

MyLab™ is a trademark of Esaote S.p.A. CnTI™: The use of Contrast Agents in the USA is limited by FDA to the left ventricle opacification and to characterization of focal liver lesions. Technology and features are system/configuration dependent. Specifications subject to change without notice. Information might refer to products or modalities not yet approved in all countries. Product images are for illustrative purposes only. For further details, please contact your Esaote sales representative.

Please visit us online
for more information

