

The Imaging Expert's **Choice**

Alpha



Seven



Top Performance & Specialism

MyLab[™]Alpha Mobile



Features

- 2 transducer connectors
- 13.3" 90° rotatable widescreen monitor
- Anti-theft security lock
- Long lasting / fast charging battery
- Weight: 7.3 kg (including battery)
- Compact trolley with 2 extra transducer connectors
- Trolley for mobile services
- 15 seconds battery based start-up time



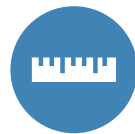
Patient ID/Owner Name

The patient demographic screen is dedicated to the veterinary environment with fields for the animal's name as well as species and breed.



Application Selection

The veterinary application software makes it easy to choose from a list of applications before starting the examination. After selecting the application, the system automatically displays the presets corresponding to the chosen purpose. A dedicated application icon is shown on the screen, confirming that the correct settings are selected.



Measurements and Reports

Confirming Esaote's dedication to the veterinary world, complete veterinary measurement packages, including abdomen, cardiology and reproductive gestational calculations provide easy exam documentation.



Body Marks

Using a body mark to show the exact position where the scan has been done is useful. But being able to indicate this with a body mark that actually resembles the scanned species is even better.



Image Quality

With both Esaote systems, in any application and with any probe, you can rely on excellent image quality to aid fast and accurate diagnosis.



Modularity

Both systems can be configured to your needs. The base is the B/W version with the OPUS (One Probe Ultrasound Solution) SC3123 Micro Convex transducer. Optional standard transducers are available; the systems can even grow in terms of quality with the extended licence transducers and in terms of functionality (Advanced Cardiology) with the Phased Array transducers.

The high-end, portable MyLabAlpha and console model MyLabSeven, offer the demanding imaging expert a combination of best image quality and complete functionality. Their wide range of transducers for all small animals, exotics, equine and farm animal applications covers imaging and Doppler at the highest level.



MyLab™Desk³

With MyLab™Desk³ installed on your PC you can easily copy your total archive from the ultrasound system for convenient reviewing and image processing.



Wireless Windows® and DICOM Connectivity

Both systems are designed for limitless wireless connectivity and can be easily implemented in any Windows® or DICOM environment. Being equipped with wireless connectivity, easy networking, printing and communication with external PC's are just one click away.



Remote Trouble Shooting and Services

Your system will be recovered in the shortest time possible. Connected to the internet Esaote's Service Team can easily troubleshoot any issues, perform proactive maintenance and monitor performance.



XView+

Reduction of speckle and noise, adjustable by the operator to produce an optimal personalised image.



XStrain

This makes it possible to estimate and quantify endocardial velocities of contraction and relaxation of the heart.



ElaXto

The ElaXto software enables non-invasive assessment of tissue elasticity.



CnTI™

With revolutionary real-time CnTI technology it is possible to implement innovative contrast media ultrasound procedures.

Office MyLab™Seven



Features

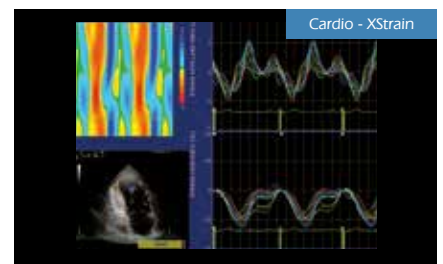
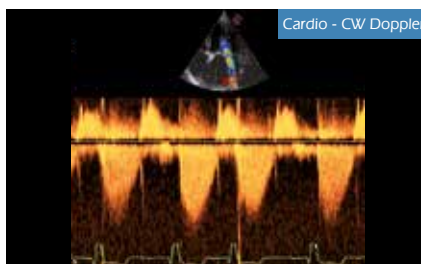
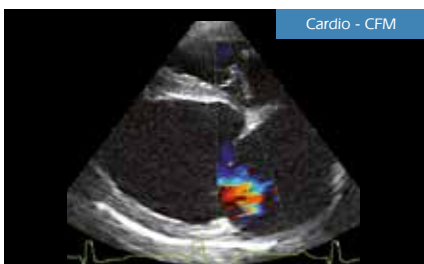
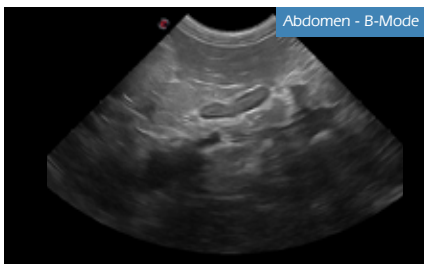
- 4 transducer connectors
- 19" rotatable wide screen monitor
- Sliding full alphanumeric keyboard
- Four 360° rotatable wheels
- Height adjustable and rotatable keyboard
- 15 seconds battery based start-up time

Small Animals



Stunning images within reach

MyLabAlpha as well as MyLabSeven provide impressive image quality in a wide range of applications. Besides B-Mode, M-Mode and Doppler-Imaging, the systems offer multiple advanced technologies to meet every clinical need.



For over 30 years, as market leader, Esaote has monitored the imaging needs of the veterinarian in their daily practice. Full, dedicated functionality, high image quality and easy operation are our cornerstones. Both the MyLabAlpha as well as the console version MyLabSeven are designed to fulfill all of the small animal veterinarian's expectations.

Transducers



SC3123

For all general applications

- 9-4 MHz
- Up to 93° scan angle



AC2541

Abdominal imaging, large dogs and large sized exotics

- 8-1 MHz
- Up to 63° scan angle



SL1543

Transducer for MSK in dogs and cats, and general imaging of exotics

- 13-4 MHz
- 47 mm



SP2442

Mid frequency phased array transducer for advanced cardiac examination in mid- and small sized species

- 8-3 MHz
- Up to 89° scan angle



SP2430

Low frequency phased array transducer for advanced cardiac examination in larger animals

- 4-1 MHz
- Up to 87° scan angle



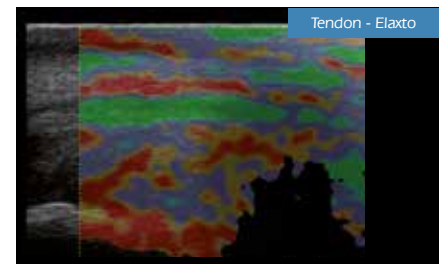
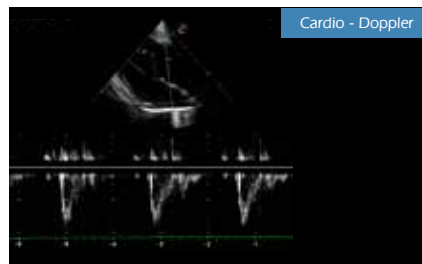
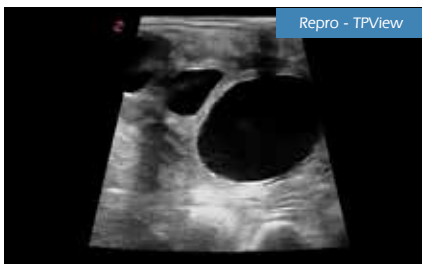
ST2613

Transesophageal echocardiography

- 9-4 MHz
- Up to 90° scan angle

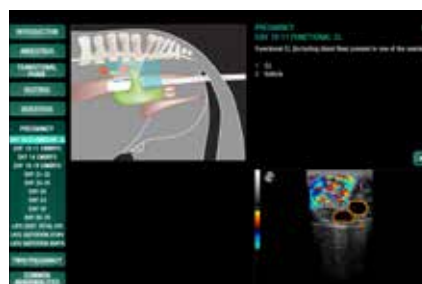
Biopsy guides are optional available for all relevant transducers

Equine & Farm Animals



Libraries^(*)

MyLibrary is an innovative application dedicated tool integrated in both systems for users' reference, which includes anatomical atlas and "How to do" reference images, so users can instantly and easily have access to a fast, thorough and application specific educational environment.



(*) Work in progress. (Contact your local representative for more information).

The MyLabAlpha and MyLabSeven cover all possible equine and farm animal applications. Specific transducers are available for reproduction scanning, tendons and ligaments, cardiac and general imaging.

Veterinary Endo Rectal Transducer



Veterinary Endo Rectal Transducer (SV3513)

The famous Esaote Veterinary Endo Rectal transducer has a proven reputation based on image quality, reliability, ergonomic design and durability (10-5 MHz; 50 mm).

Transducers



SL1543

Tendons and ligaments

- 13-4 MHz
- 47 mm



SP2430

Low frequency phased array transducer for advanced cardiac examination in equine and larger animals

- 4-1 MHz
- Up to 87° scan angle



AC2541

Trans-abdominal; reproduction scanning, general imaging and MSK

- 8-1 MHz
- Up to 63° scan angle



ST2612

Transesophageal echocardiography

- 7-3 MHz
- Up to 89° scan angle



SC3123

Specific transducer for hoof and pastern scanning

- 9-4 MHz
- Up to 93° scan angle

Biopsy guides are optional available for all relevant transducers



Join the global leader in veterinary imaging

Esaote is 'the' pioneer in ultrasound and are the MRI in the veterinary field. We have over 30 years of market leadership and preferred supplier for many veterinary practices, clinics and research centers, as well as for many zoos and wildlife institutions.

Offering perfect product in term of quality, functionality, price, service and education, combined with a deep understanding of the veterinarians' needs, will guarantees our top position in the veterinary imaging market.

Please challenge us with your imaging, ultrasound and/or MRI needs in your daily practice or specific projects. We would welcome being your imaging partner.

Esaote S.p.A.

Via di Caciolle, 15 50127 Florence, Italy, Tel. +39 055 4229 1, Fax +39 055 4229 208, international.sales@esaote.com
Via A. Siffredi, 58 16153 Genoa, Italy, Tel. +39 010 6547 1, Fax +39 010 6547 275, info@esaote.com

FRANCE

Esaote Medical SAS
ZA du Bel Air
10, rue de Témar, 78105 Saint-Germain-en-Laye
Tel. +33 1 8204 8900, Fax +33 1 3061 7210
info@esaote.fr

BRASIL

Esaote Healthcare do Brasil
Rua Tomas Carvalhal, 711
04006-001 São Paulo SP
Tel. +55 11 2789 0400 Fax +55 11 2789 0432
comercial@esaote.com.br

GERMANY

Esaote Europe B.V. – Niederlassung Deutschland
Max-Planck-Straße 27a
50858 Köln
Tel. +49 2234 688 5632, Fax +49 2234 967 9628
info@esaote.de, www.esaote.de

ARGENTINA

Esaote Latinoamérica S.A.
San Martín 551, Cuerpo 'C', Piso 8, (C1004AAK) Buenos Aires
Tel. +54 11 4326 1832, Fax: +54 11 4328 1245
info@esaote.com.ar

SPAIN

Esaote España S.A.
C/. Pont Reixat, 5
08960 Sant Just Desvern, Barcelona
Tel. +34 93 473 2090, Fax +34 93 473 2042
info@esaote.es

INDIA

Esaote Asia Pacific Diagnostic Private Limited
DLF IT Park, A - 44 & 45, Tower- C, Ground Floor,
Sector- 62, Noida, Uttar Pradesh, India
Pin Code: 201 301
Tel. +91 120 4732444, Fax +91 120 4750148
info@esaote.in

THE NETHERLANDS AND BELGIUM

Esaote Benelux B.V.
Philippsweg 1
6227 AJ Maastricht
Tel. +31 43 3824650, Fax +31 43 3824651
benelux@esaote.nl

HONG KONG AND FAR EAST

Esaote China Ltd
18/F, 135 Bonham Strand Trade Centre,
135 Bonham Strand, Sheung Wan, Hong Kong
Tel. +852 2545 8386, Fax +852 2543 3068
esaote@esaotechina.com

UK

Esaote UK
14, Cambridge Science Park
Milton Road, Cambridge, CB4 0FQ
Tel. + 44 1223 424499, Fax + 44 709 288 0231
infoUK@esaote.com

CHINA

Esaote Shenzhen Medical Equipment
Room 2608, Tower B
Beijing Global Trade Center
36 North Third Ring Road East,
Dongcheng District, 100013, Beijing
Tel. +86 010 58257766, Fax +86 010 52257760

NORTH AMERICA

Esaote North America
8000 Castleway Drive,
Indianapolis, IN 46250
Tel. +1 317 813 6000, Fax +1 317 813 6600
inquire@esaoteusa.com

RUSSIAN FEDERATION AND CIS

Esaote S.p.A.
18 Leningradsky prospekt
Off. 5 and 6, Moscow 125040
Tel. +7 495 232 0205, Fax +7 495 232 1833
esaotemoscow@yandex.ru

160000056MAK Ver. 01



EN ISO 13485:2012 ISO 9001:2008

0051



Windows® is a registered trademark of Microsoft Corporation.
Technology and features are system/configuration dependent.
Specifications subject to change without notice. Information might refer to products or modalities not yet approved in all countries.
For further details, please contact your Esaote sales representative.