



MYLAB™ VET PRODUCT LINE

MyLab™ X75VET **THE IDEAL PARTNER**

MyLab™ X75VET is your perfect partner in acquiring high-quality ultrasound images with sharp precision in all applications.

Powered by **smart** ergonomics, **light** and **silent**, to increase everyday productivity now.



NEVER STOP ELEVATING YOUR VET EXPERIENCE.



MyLabTMX75 VET

 **Dedicated VET Software and Probes**

 **Comfort while scanning**

 **Easy to Move**

 **Quick Start-up**

 **Eco-Friendly**

 **Widen Connectivity**

 **Integrated long-life battery**

 **3-year service coverage**

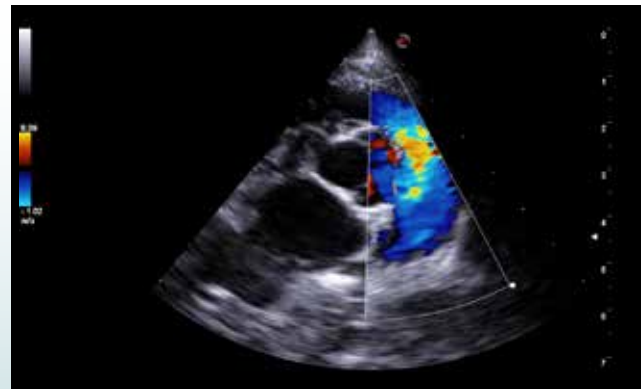


Esaote S.p.A. - sole-shareholder company
Via Enrico Meloni 77, 16152 Genova, ITALY, Tel. +39 010 6547 1, Fax +39 010 6547 275, info@esaote.com

MyLab is a trademark of Esaote spa.
Technology and features are system/configuration dependent. Specifications subject to change without notice. Information might refer to products or modalities not yet approved in all countries.
Product images are for illustrative purposes only. For further details, please contact your Esaote sales representative.



Dog - lymphoid neoplasm - B-Mode



Dog - Pulmonary tract outflow - Color Doppler

- **@asyMode and @asyColor** - "one-touch" image optimization through intelligent real-time algorithms
- **First-class** cardio image and advanced measurements package
- **Immediate** Doppler Optimization
- Direct access to **presets**
- **QElaxto 2D** to assess tissues stiffness
- **microV** to enhance tissue vascularization
- **CnTITM** and **QPack** to perform contrast examination with contrast agent quantification
- **Follow up Multimodality** to compare any DICOM modality in real-time