



MyWork

MyPatient

MySystem

MyLab™



MyLab™**Eight**

Outstanding
image quality



WideView 21.5"
IPS Monitor



@MPowered
Engine



Wireless
connectivity



Large probe
portfolio



Advanced
clinical tools



MyLab™Eight ultrasound system sets a new standard in image quality

- **@MPowered Engine** to optimize high-density and single-crystal transducers to enable images to be captured with high frame rate and unprecedented quality.
- **Sharp imaging** and clear hemodynamics analysis for confident diagnosis.
- **WideView monitor** technology offers sharp diagnostic image clarity with enhanced spatial and contrast resolution.
- **A full assortment of advanced tools** make MyLab™Eight a unique solution for your most demanding clinical needs.



Auto EF



Stress Echo



XStrain



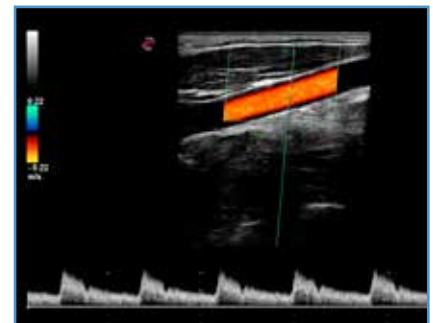
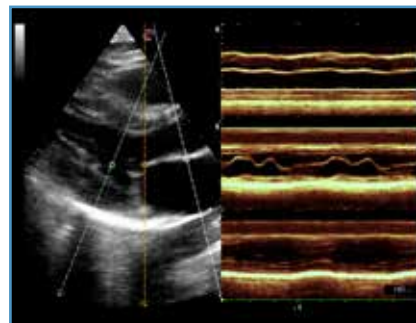
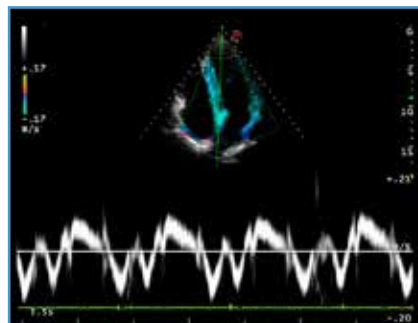
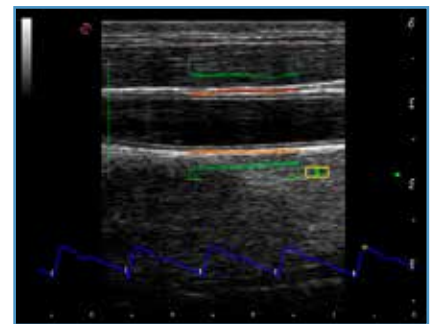
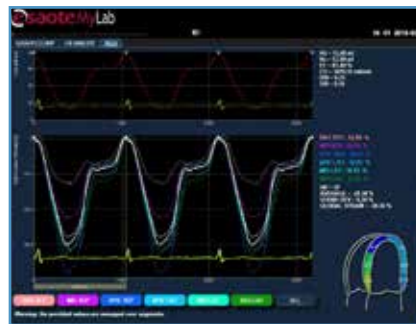
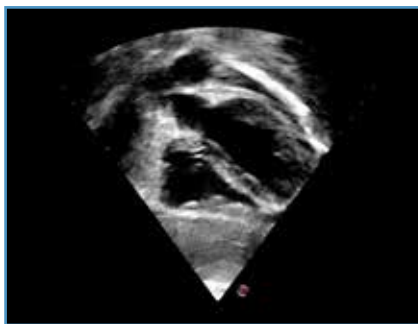
RFQIMT



RFQAS



microV



Thank you for considering Esaote

We listen to your needs and work every day to provide the most advanced technologies and the most innovative design for you to excel in the patient care.

Technology and features are system/configuration dependent. Specifications subject to change without notice. Information might refer to products or modalities not yet approved in all countries. For further details, please contact your Esaote sales representative.

Esaote S.p.A. Via di Caciolle, 15 50127 Florence, Italy, Tel. +39 055 4229 1, Fax +39 055 4229 208, international.sales@esaote.com
Via E. Melen, 77 16152 Genoa, Italy, Tel. +39 010 6547 1, Fax +39 010 6547 275, esaote@pec.esaote.com



Please visit us online for more information