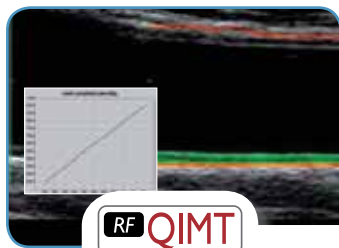
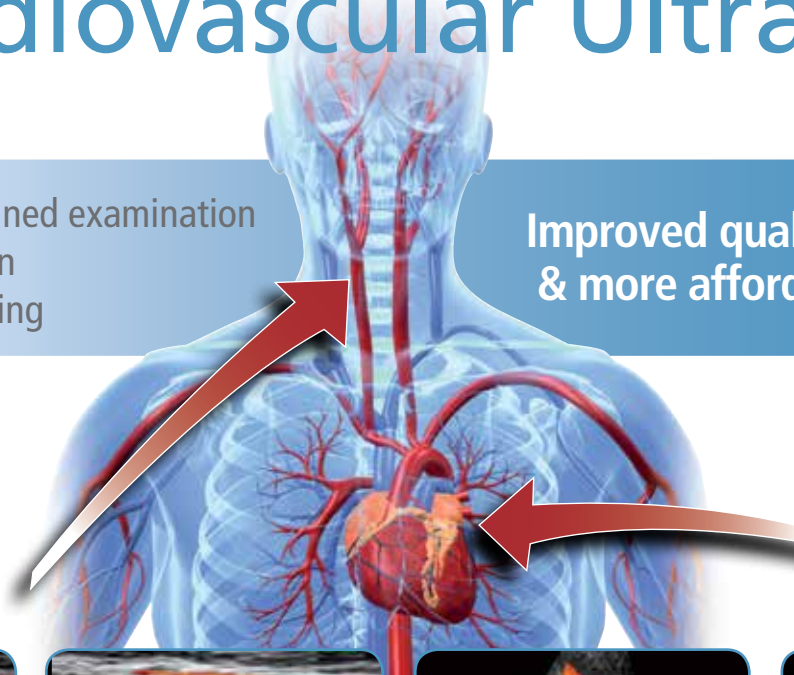


Changing the role of Cardiovascular Ultrasound

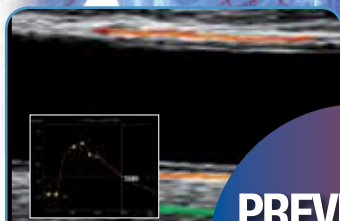
- Heart-vessel combined examination
- Early CVD detection
- Treatment monitoring

Improved quality of life
& more affordable care



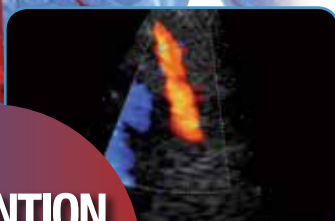
RF QIMT

Quality Intima Media Thickness



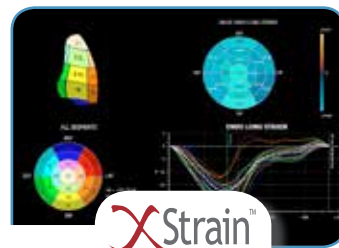
RF QAS

Quality Arterial Stiffness



CFI

Coronary Flow Imaging



XStrain™

2D Speckle Tracking

PREVENTION Suite



Get informed about the latest developments at our booth!

APRES ACTIVE PREVENTION STUDY

Aim of this multi-center study:

- To stratify and individualize personal risk, and formulate a specific prevention strategy.

@HD Technology

- Enhanced Diagnostic Value
- Maximizing Signal Information
- Low power consumption
- More efficient healthcare

MyLab™Twice



MyLabTwice represents a "paradigm shift" in the hospital organization, combining premium performance and point-of-care ultrasound. Innovative solutions contribute to bring a new vision in the daily routine: better clinical outcomes and improved efficiency.



MyLab™Seven



MyLabSeven delivers high class performance and very compact size. Designed on revolutionary productivity-oriented platform, MyLabSeven combines performance, ergonomics, mobility and Connectivity at the highest level: a real breakthrough in its class.

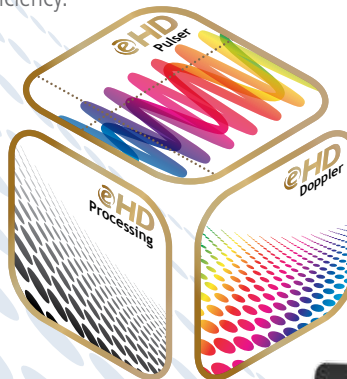
@HD

iQ Probes



@HD

Pulse



@HD

Doppler



MyLab™Alpha



MyLabAlpha, premium portable ultrasound, delivers features and performance never seen on a portable system. Exclusive solutions and features deliver reliable diagnosis and portability without compromise.



MyLab™40

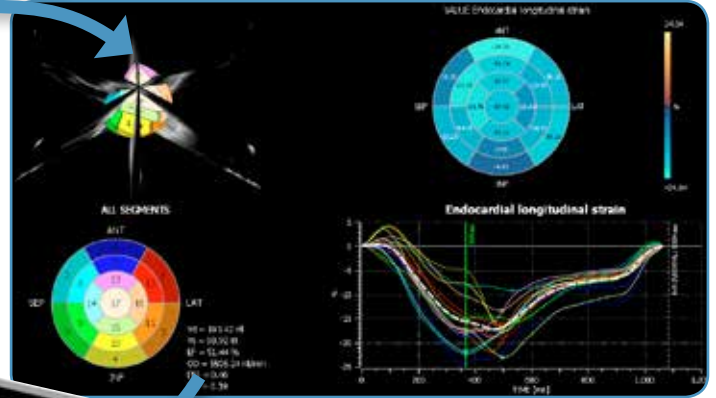


When thinking to daily routine, reliable diagnosis, completeness and ergonomics are the most important factors. MyLab40 eHD is a balanced and affordable solution, able to provide solid basic performance and wide selection of advanced technologies in a compact and agile case.



XStrain™ 4D

Get the Whole Picture

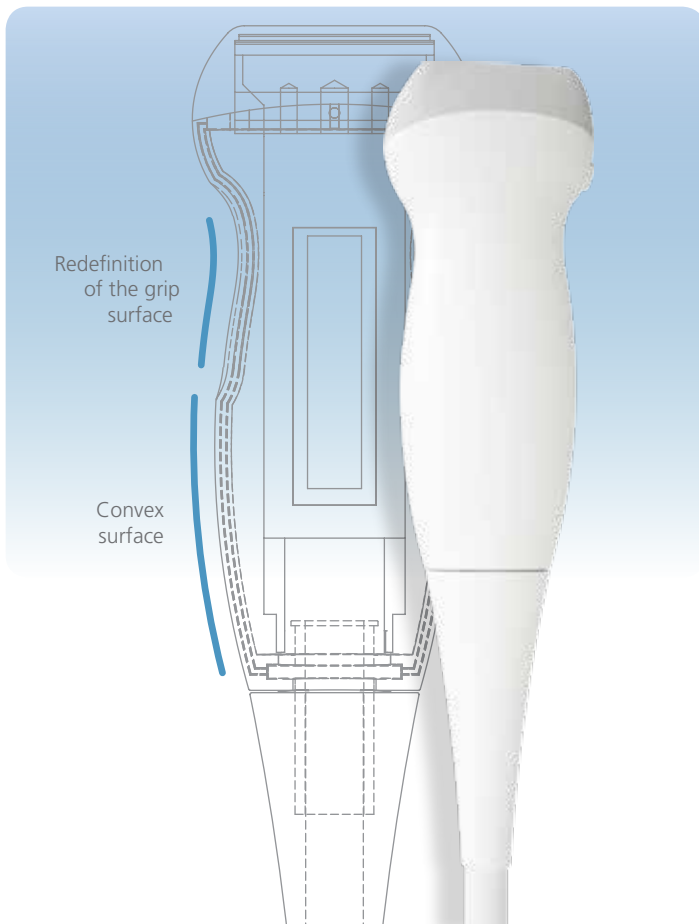


XStrain™ is a non-invasive tool to better investigate the myocardial function and explore and quantify aspects of the heart's physiology which were not possible to detect and quantify with previous ultrasound technologies.



Advantages of using the XStrain-4D:

- Volumetric LV assessment based on high frame rate imaging acquired with standard cardiac probe
- Global results display and visualisation by coronary territories
- Result shown in the patient's report



iQProbe transducer technology

iQProbes

iQProbe transducer technology is based on the following advanced developments:

1) New active PZT material and Resin

- Single crystal technology
- Low acoustic impedance

2) 5 adaptive matching layers

- Lower acoustic impedance
- Better sensitivity and bandwidth

3) New filling material

- Improved stability for the array structure
- Highest level of decoupling between the elements of the array

4) New acoustic lens

- New silicon-based material
- Lower absorption,
- Better sensitivity, preserves bandwidth

Focus on:

ESC Congress 2013

31 Aug 2013 - 04 Sep 2013
Amsterdam - Netherlands

International courses and webinars

International advanced course on Echocardiography deformation indexes 25-26 November 2013, Milan, Italy



Scientific organiser

Dr. Claudio Bussadori,
Department of Pediatric Cardiology
and Adult with Congenital Heart Disease,
IRCCS San Donato Hospital Milano,
Milan, Italy



Esaote webinars

Register for dedicated webinars
at www.esaote.com/education

Next session on 24 September and 19 November

Basic echocardiography

This webinar will cover:

- Basic cardiac anatomy & physiology
- Echo standard scan views
- Routine cardiac measurements
- Case review on MyLabDesk

Advanced echocardiography: XStrain 2D, XStrain 4D

This webinar will cover:

- Strain/Strain rate basic concepts
- XStrain 2D: How to?
- XStrain 4D: How to?

Advanced vascular package:

RFQIMT, RFQAS

This webinar will cover:

- CVD progression & preventive healthcare
- RF analysis concepts
- RFQIMT, RFQAS clinical outcomes



169 0123 00 MA Rev. 01

Esaote S.p.A.

Via di Caciolle, 15 50127 Florence, Italy, Tel. +39 055 4229 1, Fax +39 055 4229 208, international.sales@esaote.com
Via A. Siffredi, 58 16153 Genoa, Italy, Tel. +39 010 6547 1, Fax +39 010 6547 275, info@esaote.com

www.esaote.com

FRANCE
Esaote France S.A.R.L.
ZA du Bel Air - 10, rue de Témara
78105 Saint-Germain-en-Laye
Tel. +33 1 8204 8900
Fax +33 1 3061 7210
info@esaote.fr

GERMANY
Esaote Biomedica Deutschland GmbH
Max-Planck-Straße 27a
50858 Köln
Tel. +49 2234 688 5600
Fax +49 2234 967 9628
info@esaote.de

SPAIN
Esaote España S.A.
C/ Pont Reixat, 5
08960 Sant Just Desvern, Barcelona
Tel. +34 93 473 2090
Fax +34 93 473 2042
info@esaote.es

THE NETHERLANDS AND BELGIUM
Esaote Benelux B.V.
Philipsweg 1
6227 AJ Maastricht
Tel. +31 43 3824650
Fax +31 43 3824651
benelux@esaote.nl

UK
Esaote UK
14, Cambridge Science Park
Milton Road, Cambridge, CB4 0FQ
Tel. +44 1223 424499
Fax +44 709 288 0231
infoUK@esaote.com

NORTH AMERICA
Esaote North America
8000 Castleway Drive,
Indianapolis, IN 46250
Tel. +1 317 813 6000
Fax +1 317 813 6600
inquire@esaoteusa.com

BRASIL
Brasilian Direct Office
Rua Tomas Carvalhal, 711
04006-001 São Paulo SP
Tel. +55 11 2589 0533
Fax +55 11 2589 0527
leonardo.pili@esaote.com.br

ARGENTINA
Esaote Latinoamérica S.A.
San Martín 551, Cuerpo 'C', Piso 8,
(C1004AAK) Buenos Aires
Tel. +54 11 4326 1832
Fax: +54 11 4328 1245
info@esaote.com.ar

INDIA
Esaote Asia Pacific Diagnostic Private Limited
DLF IT Park, A - 44 & 45, Tower- C,
Ground Floor, Sector-62, Noida,
Uttar Pradesh, India
Pin Code: 201 301, Tel. +91 120 4732444
Fax +91 120 4750148
info@esaote.in

HONG KONG AND FAR EAST
Esaote China Ltd
18/F, 135 Bonham Strand Trade Centre,
135 Bonham Strand, Sheung Wan, Hong Kong
Tel. +852 2545 8386
Fax +852 2543 3068
esaote@esaotechina.com

CHINA
Esaote Shenzhen Medical Equipment
Room 2608, Tower B
Beijing Global Trade Center
36 North Third Ring Road East,
Dongcheng District, 100013, Beijing
Tel. +86 010 58257766
Fax +86 010 52257760

RUSSIAN FEDERATION AND CIS
Esaote S.p.A.
18 Leningradsky prospekt
Off. 5 and 6, Moscow 125040
Tel. +7 495 232 0205
Fax +7 495 232 1833
esaotemoscow@yandex.ru