

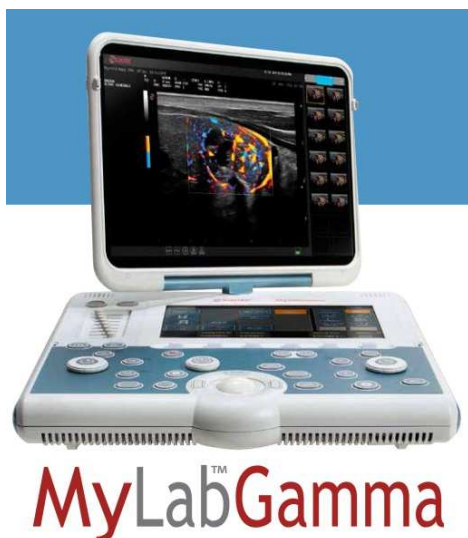


**ESAOTE IS LAUNCHING MyLab™Gamma
AT EUROPEAN SOCIETY OF CARDIOLOGY 2014**

**SMART, PORTABLE ULTRASOUND NOW AVAILABLE WHEREVER, WHENEVER
DELIVERING AFFORDABLE PRODUCTIVITY, EFFICIENCY, VALUE**

- Compact, highly portable, wireless connected, ready for use in seconds
- Fully customisable using eTouch feature
- Advanced tools facilitate more accurate diagnosis
- Ergonomic design for fast workflow and patient throughput
- Two probe connectors on board, four on the cart

25th August 2014, [GENOA, ITALY] **Esaote**, one of the world's leading manufacturers of medical diagnostic systems, is launching **MyLab™Gamma**, a best in class, highly-portable “green” ultrasound system at ESC Congress (European Society of Cardiology, Barcelona, 30th August - 3rd September). Based on Esaote's productivity-oriented operating platform, the super-light, feature packed portable system sets



ultrasound free to be used in any environment - at a moment's notice.

Highly portable and battery-operated, the MyLab™Gamma offers fast boot times and a rapid resume from standby mode that means the system is ready to use within seconds. Integration of wireless connectivity, a class leading feature for a system of its size and price, facilitates easy, one-click networking with other systems and local networks as required.

“MyLab™Gamma finally sets ultrasound free,” says Joop Geijssen, Ultrasound Project Manager at Esaote. “We now bring superb quality images and fast, accurate diagnosis right to the point-of-care in any situation – wherever and whenever.”

FAST, SIMPLE TO USE, COMFORTABLE

Esaote, a recognised leader in ergonomics and design lead simplicity, has engineered the MyLab™Gamma to meet the rigorous demands of the sonographer's working environment, particularly those using ultrasound systems for many hours a day. Esaote's simple-to-use, eTouch screen-based interface guides the operator through set-up and image capture, enabling faster workflow. A high resolution widescreen monitor can be rotated through +90/-90 degrees to increase comfort, and allows an examination to be shared with the patient or colleague. An almost silent cooling system improves the quality of the working environment and reduces operator disturbance.

Two transducer connectors allow two probes to be connected to the system: switching the probe selection during an examination is simple, further increasing efficiency and workflow. An optional multi-connector is available, allowing up to four transducers to be connected and selected via the intuitive software interface. MyLab™Gamma also comes with remote service capabilities. The system can be recovered in the shortest time possible by simply connecting it to the network: Esaote's Service Team can easily troubleshoot any issue, perform proactive maintenance and monitor performance.

OPTIMAL SOLUTION FOR A RANGE OF APPLICATIONS

Incorporating high resolution imaging, advanced technologies, and supporting a range of probes, MyLab™Gamma is an optimal ultrasound solution for cardiovascular and a range of other applications

1. For **cardiovascular** applications, MyLab™Gamma is equipped with comprehensive cardiac and vascular ultrasound packages, and provides excellent image quality in a very compact size. Advanced tools (QIMT, XStrain™(*), TEE Probe, Post Processing, Wireless connectivity - customizable measurements and flexible configuration - coupled with a tailored reporting

package - make MyLab™Gamma the complete solution for cardiovascular scanning in the clinic and on the move.

2. MyLab™Gamma is also well-suited to other applications, including general imaging, women's health, anaesthesiology, emergency and critical care. The system represents an ideal solution from Point-of-Care to shared Ultrasound services.

MyLab™Gamma comes with a 2 year additional device warranty package to the current standard warranty period (excludes probes, carts and accessories).

(*) Available through MyLab™Desk³ software suite

MyLab™Desk³ software suite is not intended or provided for an official diagnostic interpretation.

FOR MEDIA EDITORS

Esaote at ESC 2014

Esaote will be exhibiting at the European Society of Cardiology 2014 at Barcelona from Saturday 30th August to Wednesday 3rd September 2014. **Location: F250**

Media interviews

To arrange an interview with a member of the senior marketing team (Carlos Faustmann, Chief Marketing Officer, Global Marketing and Domestic Sales, Esaote Group), please contact Rachel Cunningham for availability: rachelg@roadcommunications.co.uk / 02089955832

ABOUT ESAOTE

With €276.1 million in consolidated sales in 2013 (of which 65% were generated from international markets), Esaote Group is a leading player in the biomedical equipment sector, with a particular focus on ultrasound, dedicated magnetic resonance, and software for managing the diagnostic process. Esaote has over 1,335 employees, 19% of which are employed in R&D activities. Esaote has industrial and research units in Italy (Genoa, Florence, Naples), the Netherlands (Maastricht) and China (Shenzhen). Esaote is internationally recognised as one of the “**Top Ten**” diagnostic imaging companies in the world and enjoys the co-operation of worldwide scientific and clinical research centres and universities. Esaote has filed more than 120 international patents.

Information about the Esaote Group and its products is available at www.esaote.com

Technology and features are system/configuration dependent. Specifications subject to change without notice. Information might refer to products or modalities not yet approved in all countries. For further details, please contact your Esaote sales representative.