



ESAOTE SHOWCASES TWO NEW ULTRASOUND SYSTEMS AT EUROECHO 2014:

MYLAB™SIX & MYLAB™GAMMA

DELIVERING AFFORDABLE PRODUCTIVITY, EFFICIENCY, VALUE

25th November 2014 [Genoa, Italy] - At EUROECHO IMAGING 2014 (European Society of Cardiology - Wien, Austria - 3-6 Dec 2014) **ESAOTE** will showcase two new ultrasound systems, confirming its position as a leading innovator in the global ultrasound imaging market, delivering affordable productivity, efficiency and value. **MyLab™Six** and **MyLab™Gamma** have been developed to address key sectors of the imaging market, reinforcing ESAOTE's global ultrasound portfolio - from application-specific to fully shared services.



A leader in ergonomics and design lead simplicity, Esaote has engineered the MyLab™Gamma and MyLab™Six to meet the rigorous demands of the sonographer's working environment. High on vision, low on noise, these 'green' ultrasound systems with remote service capabilities improve user comfort without compromising diagnostic confidence.

"These versatile, valuable and efficient new products are the work of considerable research into the current and future demands of the market place," said Carlos Alonso, CEO, Esaote.

MyLab™Six

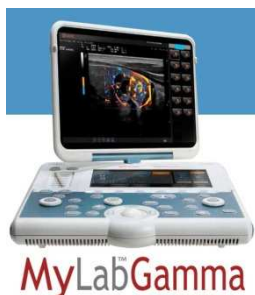
MyLab™Six is a complete cart-based system that can be used across a broad range of applications from cardiovascular to general imaging and women's health. It comes with highly advanced CV features, including Compass M-Mode, Tissue Velocity Mapping, Stress Echo, XStrain™(*) and QIMT - combining to ensure complete confidence in any diagnosis. The system configuration offers a wide variety of transducers, including Transesophageal multi-plane probe, for use within many type of investigations: it delivers software and probes from dedicated-to-application to fully shared service solutions.



“MyLab™Six represents the extra steps we are taking in order to add value and efficiency to ultrasound in any specific clinical setting,” explains Giovanni Altobelli, Ultrasound Marketing Product Manager at Esaote. *“It offers a premium, yet affordable, solution to customers in terms of user comfort, performance and versatility. Easy workflow and automation of key options maximise patient throughput without compromising diagnostic confidence.”*

MyLab™Gamma

Highly portable and battery-operated, the MyLab™Gamma offers fast boot times and a rapid resume from standby mode which means the system is ready to use within seconds. Integration of wireless connectivity - a class leading feature for a system of its size and price - facilitates easy, one-click networking with local networks as required.



“MyLab™Gamma finally sets ultrasound free,” explains Joop Geijssen, Ultrasound Project Manager at Esaote. *“We now bring superb quality images and fast, accurate diagnosis right to the point-of-care in any situation - wherever and whenever.”*

Incorporating high resolution imaging, advanced technologies, and supporting a range of probes, MyLab™Gamma is an optimal ultrasound solution for cardiovascular and a range of other applications.

For cardiovascular applications, MyLab™Gamma is equipped with comprehensive cardiac and vascular ultrasound packages, and provides excellent image quality in a very compact size. Advanced tools (QIMT, XStrain™(*), TEE Probe, Post Processing, Wireless connectivity - customizable measurements and flexible configuration - coupled with a tailored reporting package - make MyLab™Gamma the complete solution for cardiovascular scanning in the clinic and on the move.

MyLab™Gamma is also well-suited to other applications, including general imaging, women's health, anaesthesiology, emergency and critical care. The system represents an ideal solution from Point-of-Care to shared Ultrasound services. Esaote officially introduced MyLab™Six and MyLab™Gamma in the EMEA market at ESC (Barcelona) in August.

Also discover **SUITESTENSA CVIS PACS** in Healthcare IT, the most comprehensive CVIS PACS Software Platform for all Cardiology Specialties - and **MyCardioPad**, the first electrocardiograph (ECG) with a Total Touch-Screen interface technology that combines ease of use with portability and easy data access.

COME AND JOIN ESAOTE AT EUROECHO 2014: BOOTH D14.

To request additional information on Esaote's Ultrasound, Healthcare IT and ECG products please contact info@esaote.com

About Esaote

With €276.1 million consolidated sales in 2013 (of which 65% were generated from international markets), Esaote Group is a leading player in the biomedical equipment sector, with a particular focus on ultrasound, dedicated magnetic resonance, and software for managing the diagnostic process. Esaote has over 1,335 employees, 19% of which are employed in R&D activities. Esaote has industrial and research units in Italy (Genoa, Florence, Naples), the Netherlands (Maastricht) and China (Shenzhen). Esaote is internationally recognised as one of the "**Top Ten**" diagnostic imaging companies in the world and enjoys the co-operation of worldwide scientific and clinical research centres and universities. Esaote has filed more than 120 international patents.

Information about the Esaote Group and its products is available at www.esaote.com

(*) Available through MyLab™Desk³ software suite
MyLab™Desk³ software suite is not intended or provided for an official diagnostic interpretation.

Technology and features are system/configuration dependent. Specifications subject to change without notice. Information might refer to products or modalities not yet approved in all countries. For further details, please contact your Esaote sales representative.