

Focus on:



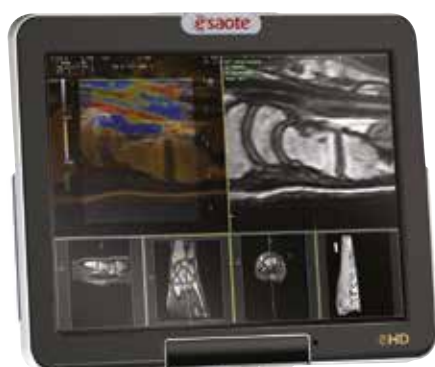
Come and visit us! Booth No. 49 A

The new era in Rheuma Imaging

O·scan
Dedicated MRI



MyLab™ Twice
@HD
Technology



@HD

iQ Probes



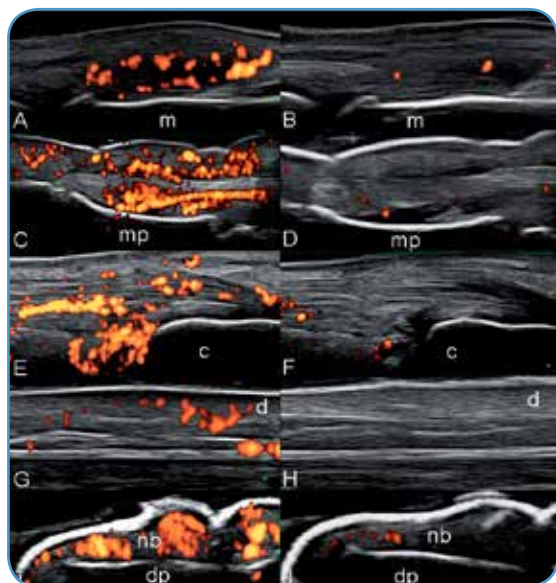
@HD



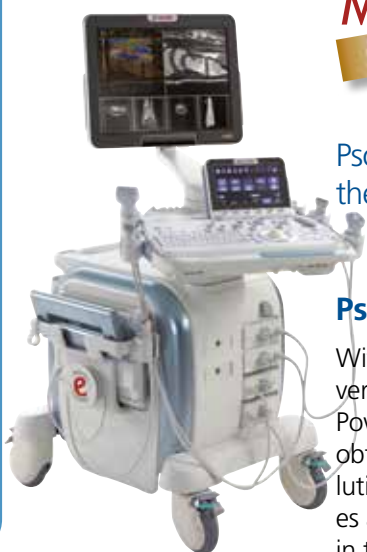
@HD Technology



esaote
Creativity in Healthcare



(Images of 5TPD districts: joint, tendon, enthesis, skin/Dermis, nail)

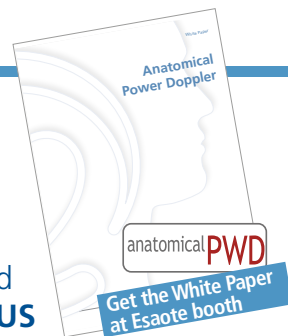


MyLab^{Twice}

eHD technology

Psoriatic Arthritis and the Five Targets: **PDUS composite score** **Five Target Power Doppler for Psoriatic Disease (5TPD)**

With high frequency probes (up to 22 MHz) and very sensitive PWD (eHD Technology Anatomical Power Doppler up to 16.7 MHz), it is possible to obtain a detailed study (with extremely high resolution power doppler) of morphostructural changes and the sensitive detection of blood flow, even in the smallest vessels of superficial tissues.

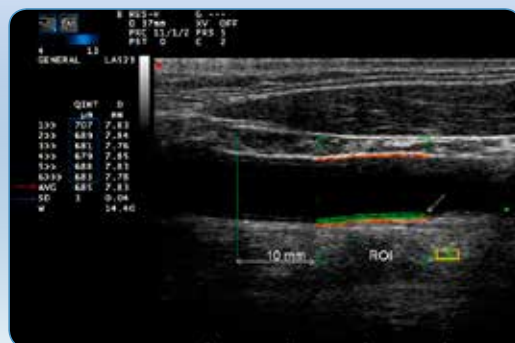


MyLab^{Seven}

eHD technology

Cardiovascular risk management in patients with Rheumatoid Arthritis and other forms of inflammatory arthritis

EULAR Standing Committee for Clinical Affairs recently provided evidence-based recommendations for cardiovascular risk management in patients with rheumatoid arthritis and other forms of inflammatory arthritis. These recommendations addressed all aspects related to proper the



management of total cardiovascular risk in patients with chronic arthritis, including early identification and monitoring. Esaote QIMT^{RF} data technology provides the most accurate, quick and easy to use measurement of C-IMT by ultrasound for assessing early atherosclerosis wall changes.

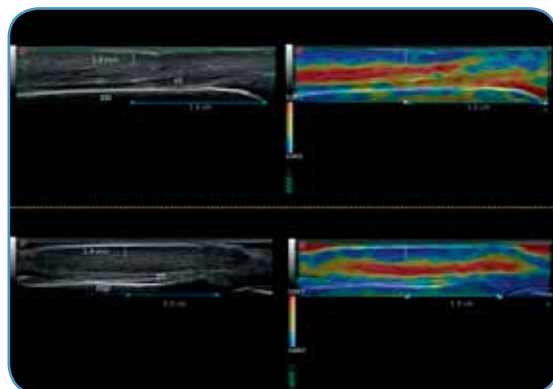
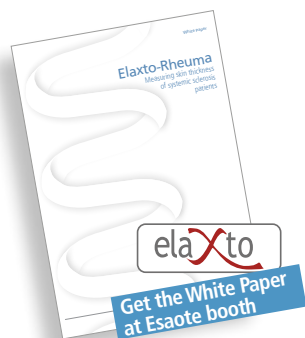


MyLab^{One}

Sonography Needle Guidance for intra-articular treatment

Esaote Ultrasound Technology improves the visualization of the needle during sonography guidance, making the procedure or intra-articular injections faster and easier.





MyLab Alpha
eHD technology



Systemic Sclerosis (SSc) Elastosonography for skin thickness measurements

Esaote Elaxto improves the reliability of US measurements of dermal thickness at finger level in patients with SSc, allowing you to identify the interface dermis/hypodermis.

The assessment of skin disease in SSc remains a challenge for rheumatologists, however Elastosonography improves the reliability of dermal thickness measurements in SSc.

O-scan Dedicated MRI: the best match for your diagnostic needs

- > High quality MR imaging of extremities
- > High sensitivity and specificity for early detection and diagnosis of many rheumatic pathologies like Rheumatoid Arthritis (RA) and Osteoarthritis (OA)
- > patient friendly
- > short exam times
- > compatible with today's economical constraints
- > easy and cost-effective follow-up through diagnostic imaging
- > easy to install and affordable running costs

O-scan
Dedicated MRI

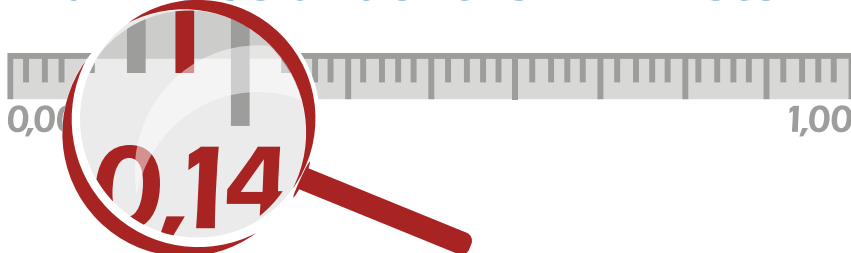


esaote
Creativity in Healthcare

Focus on:



A universe under the millimeter™



O·scan
Dedicated MRI



Rheuma Lab
MRI and
Ultrasound
in less than 20 m²
MyLab Seven

eHD
Technology

International school of Ultrasound in Rheumatology

Berlin, Germany
date to be defined

Prof. Wolfgang A. Schmidt, Immanuel Krankenhaus Berlin,
Rheumaklinik Berlin-Buch, Berlin, Germany

International school of Musculoskeletal ultrasound

High-resolution ultrasound of the extremities

I. Elbow to fingers, Genoa, Italy - 19-21 September 2013

II. Leg to Toes, Genoa, Italy - 10-12 October 2013

Prof. C. Martinoli, University of Genoa (Italy)

Scientific secretariat

Serono Symposia International Foundation, Salita di San Nicola da Tolentino, 1/b, 00187 Rome, Italy

Phone: +39-06-420413 302 - Fax: +39-06-420413 677 - E-mail: info@seronosymposia.org

Serono Symposia International Foundation

is a Swiss Foundation with headquarters in 14, rue du Rhône, 1204 Geneva, Switzerland



Education



169 0115 00 (MA Rev. 01)

Esaote S.p.A.

Via di Caciolle, 15 50127 Florence, Italy, Tel. +39 055 4229 1, Fax +39 055 4229 208, international.sales@esaote.com
Via A. Siffredi, 58 16153 Genoa, Italy, Tel. +39 010 6547 1, Fax +39 010 6547 275, info@esaote.com

FRANCE
Esaote France S.A.R.L.
ZA du Bel Air - 10, rue de Témara
78105 Saint-Germain-en-Laye
Tel. +33 1 8204 8900
Fax +33 1 3061 7210
info@esaote.fr

BRASIL
Brazilian Direct Office
Rua Tomas Carvalhal, 711
04006-001 São Paulo SP
Tel. +55 11 2589 0533
Fax +55 11 2589 0527
leonardo.pili@esaote.com.br

GERMANY
Esaote Biomedica Deutschland GmbH
Max-Planck-Straße 27a
50858 Köln
Tel. +49 2234 688 5600
Fax +49 2234 967 9628
info@esaote.de

ARGENTINA
Esaote Latinoamérica S.A.
San Martín 551, Cuerpo 'C', Piso 8,
(C1004AAK) Buenos Aires
Tel. +54 11 4326 1832
Fax: +54 11 4328 1245
info@esaote.com.ar

SPAIN
Esaote España S.A.
C/ Pont Reixat, 5
08960 Sant Just Desvern, Barcelona
Tel. +34 93 473 2090
Fax +34 93 473 2042
info@esaote.es

INDIA
Esaote Asia Pacific Diagnostic Private Limited
DLF IT Park, A - 44 & 45, Tower- C,
Ground Floor, Sector- 62, Noida,
Uttar Pradesh, India
Pin Code: 201 301, Tel. +91 120 4732444
Fax +91 120 4750148
info@esaote.in

THE NETHERLANDS AND BELGIUM
Esaote Benelux B.V.
Philipsweg 1
6227 AJ Maastricht
Tel. +31 43 3824650
Fax +31 43 3824651
benelux@esaote.nl

HONG KONG AND FAR EAST
Esaote China Ltd
18/F, 135 Bonham Strand Trade Centre,
135 Bonham Strand, Sheung Wan, Hong Kong
Tel. +852 2545 8386
Fax +852 2543 3068
esaote@esaotechina.co

UK
Esaote UK
14, Cambridge Science Park
Milton Road, Cambridge, CB4 0FQ
Tel. +44 1223 424499
Fax +44 709 288 0231
infoUK@esaote.com

CHINA
Esaote Shenzhen Medical Equipment
Room 2608, Tower B
Beijing Global Trade Center
36 North Third Ring Road East,
Dongcheng District, 100013, Beijing
Tel. +86 010 58257766
Fax +86 010 52257760

NORTH AMERICA
Esaote North America
8000 Castleway Drive,
Indianapolis, IN 46250
Tel. +1 317 813 6000
Fax +1 317 813 6600
inquire@esaoteusa.com

RUSSIAN FEDERATION AND CIS
Esaote S.p.A.
18 Leningradsky prospekt
Off. 5 and 6, Moscow 125040
Tel. +7 495 232 0205
Fax +7 495 232 1833
esaotemoscov@yandex.ru

www.esaote.com